

DO YOU
WANT
THIS
SPACE
FOR £50
A MONTH?

bill.willowe@gmail.com

INDUSTRIAL WOODWORKING & PANEL PROCESSING

MARCH 2023

DO YOU
WANT
THIS
SPACE
FOR £50
A MONTH?

bill.willowe@gmail.com

A PERFECT COMBINATION



THE German woodworking manufacturing giant, Martin is renowned all over the world for the excellence of its machinery offering. Not only are its machines individually designed to provide the very best in technological advances, but in the case of the company's T45 planer and T54 surface planer, these two sister models have been created to operate in tandem and to perfectly complement each other.

Space saving is an important consideration in designing the floor layout of the typical joinery workshop. Operating side by side, these two machines occupy very little more space than a combined planer and they can be operated in parallel to provide unparalleled performance excellence.

They offer the further advantage that, when working on orders where the timing is a critical factor, the two machines can also be used individually.

Both the Martin T45 planer and the T54 surface planer are designed to uncompromisingly fulfil their individual roles and to ensure optimum working results in any joinery workshop. Both come highly recommended by users.

For further information tel Martin on 00 49 8332 9110.
Visit www.martin.info

W EXHIBITION POSTPONED AGAIN!

THE organisers of W Exhibition, the UK's flagship trade show for the furniture manufacturing and joinery industries, have announced that the event will return to the NEC from May 19-22 May, 2024.

Alongside the restructuring of the event team, the organisers have undertaken an extensive consultation period with stake-holders,

including trade associations, trade bodies and it is claimed, with the woodworking industry media (although there has been no contact with this magazine by the exhibition organisers), as well as with its visiting audience.

With just over one year to go until the W Exhibition returns, event director, David Todd said:

'We're excited to announce the new dateline for the W Exhibition, which will commence with a full relaunch campaign this May, as we count down to our return to the NEC in 2024.

'The thorough research process we have conducted of both the show and the markets we serve, all make for a very exciting period ahead. We are on a very clear and defined path to ensure that the W Exhibition makes a triumphant return next May,' proclaims Mr Todd.

The W Exhibition brings together some of the world's leading suppliers of woodworking machinery, materials and tooling.

For further information visit www.wexhibition.co.uk



To find all the latest news online go to www.industrialwoodworking.co.uk

Email us at: bill.willowe@gmail.com

AUTOMATED ARCHITECTURE IS NOW WITH THE USE OF

LONDON-based business Automated Architecture is transforming the construction industry by using ABB robots to build customised, robotically assembled dwellings.

A spin-off from University College London, Automated Architecture was founded by two architects and associate professors, Mollie Claypool and Gilles Retsin, who had been working for over 10 years on robotics, automation, construction and architecture.

The company started by asking fundamental questions about how buildings are constructed. By experimenting with ABB robots to assemble various construction components, it was concluded that much of the building process could be automated.

The pandemic gave the company the time and opportunity to grow and it now employs 10 people.

In developing its offering, the company was able to turn to ABB for extensive help and support.

'ABB understands that the construction market is the next place to go for robotic automation and we received incredible support right from the beginning,' says Gilles Retsin.

When we first started, ABB provided us with a great deal of engineering support to help us figure out our first robot cell, even giving us our own space at its MK centre to play around and experiment,' adds Gilles.

Rethinking construction with robots

'AUAR's guiding philosophy is that we can't simply automate the construction of buildings – rather, buildings need to be re-designed for automation and robots. This is where AUAR's architect-led process comes to the fore.

'There is a key place for architects in this process – they can re-design and re-think how buildings are constructed, so that they are perfect for robots,' says Gilles Retsin.

'A brick is made for a human hand, as are lengths of 4 x 2 timber – we need to make construction elements that are specifically designed for robots,' explains Gilles.

The company sees today's buildings as consisting of thousands of different components, shipped in from many different parts of the world.

'Buildings are very complicated structures, because of all the different parts that are involved, resulting in a very long supply chain,' says Gilles Retsin.

'This means that if you want to automate assembly, or construction, it is almost impossible, as you would need dedicated robots to work with all the parts. It is also why the construction industry is so slow and expensive today,' adds Gilles.

AUAR's dream is to work with one type of material and one type of

machine – a standard sheet of timber that has the same properties anywhere in the world and one type of robot to build with it would help to reduce the supply chain dramatically.

This would reduce the bill of materials from 8,000 different parts to a much smaller range. For example, cutting windows digitally by robot removes many parts from the design and removes the need to transport them.

'The company can design buildings in a matter of seconds,' says Gilles Retsin.

'The design then goes straight to the ordering system, so we know how much timber is needed, how many connectors, etc. We could build a home in one week that would serve the needs of the home-owner and the wider community for decades,' adds Gilles.

The production process starts with a combination of standard sheets of cross-laminated and glued laminated (Glulam) timber. A robot cuts the sheets into components, then picks them up and assembles them into a box.

The robot can pick up the boxes and assemble them together into entire units, which are then transported to the site.

Although there is not much human intervention required in the process, AUAR sees a major benefit from the process in that it can support local jobs. Rather than building centralised factories far away from communities, a micro factory can be built close to the site.

'We always include local contractors and local suppliers to work with us on the delivery. Whilst the robotised process reduces the amount of human labour in the factory, it promotes and enables higher skills in other parts of the projects, replacing tedious, dangerous jobs,' explains Gilles.

With the construction industry currently being impacted by a growing skills shortage, automation is also providing an answer to speeding up project times and reducing build costs.

'The problem of labour shortages is a growing one, with projects taking longer and costing more to complete, as constructors compete to attract workers with higher wages,' says Gilles Retsin.

'The combination of automation new building techniques, such as pre-fabrication will help to overcome this by taking much of the arduous and potentially dangerous tasks out of building work, making construction jobs more attractive,' says Gilles.

Gilles sees micro-factories embedded in local areas, participating in and learning about the construction process.

'For example, the second unit we built was aggregated on site, with the work being carried out by someone who has not come from the building industry – she has now become the local provider in the Bristol area for building these units,' says Gilles.

The micro factory approach provides the flexibility to meet both current and future building demands. Micro factories can be sized according to the local demand and the project, with the ability to scale up using modular robot cells that can be combined to produce the quantity of homes that need to be built.

'The smallest factory is one cell, but if, for example, we have to deliver a project of 200 homes, we can set up a micro factory of 20 robots. Equally, if a local council needed 1,000 homes, then we could aggregate a number of micro factories next to each other, for example, using 100 cells,' explains Gilles.



TRANSFORMING CONSTRUCTION ROBOTS SUPPLIED BY ABB

'Once the job has been completed, these robots can be moved to other factories. If the job is large enough, we also have the option of setting up a micro factory on-site, which can help to further speed up project times by eliminating the time needed for transporting components,' says Gilles.

Now operating two micro-factories, one in London and one in Belgium, AUAR is currently selling direct to consumers and developers in the UK and European Union, concentrating on small two-to-three storey homes, micro homes and temporary spaces.

'With global demand for housing growing, it is also working on ways to apply its model to enable its products to be built in countries worldwide,' says Gilles

'As well as selling homes directly to clients and developers, we are working with contractors and manufacturing partners in Europe and the US to empower them with our tech-stack, so that they can deliver homes for us,' says Gilles.

'We are also looking at expanding our offering, including designs for a six-storey multi-family home typology that could be used to house more people on a single plot of land,' concludes Gilles.



For further information tel Michelle Jocelyn on 07710 124134.
Visit www.bit.ly/IndustrialWoodworkingPanelProcessingABBAUAR

WALSALL COLLEGE COURSE STUDENTS SHINE IN LIBERON WOODWORKING COMPETITION

STUDENTS at Walsall College have been put to the test by Liberon as part of a carpentry and joinery competition. The woodcare experts called on first year learners on the college's Level 2 bench joinery course to build and finish a stool for children, using Liberon's Wax Polish Black Bison Paste.

Students were handed a specific design by their lecturer and asked to complete the project over 15 teaching hours in total.

Two winning students together with a runner-up were selected from the class by director of faculty, Neil Sambrook and curriculum delivery manager, Nathan Hartshorne.

The project incorporated yellow pine for most of the stools, with Tulipwood used to create the circular seats. A laser cutter was programmed by the team at the college's digital innovation hub to sear in the college logo on the seats. The two winners and runner-up each won a £25 Amazon voucher provided by Liberon.

'The students did a great job. I understand they are all aged between 16 and 18 and are new to carpentry and joinery. The standards achieved

are a real testament to their skills. We'd like to congratulate the winning students and runner-up and wish all the students on the course the best of luck in their future carpentry and joinery careers,' says Liberon's marketing manager, Richard Bradley.

'All the students should be very proud of what they achieved in this competition. This challenge has showcased and helped to develop their tool-handling skills; their ability to produce both mortice and tenon and bridle joints; their aptitude for setting out and handling a cutting list and their proficiency in transferring measurements to the timber used,' says lecturer in carpentry and joinery, Paul Underwood.

'All in all, it was a great all-round teaching exercise. I've been so impressed with the way the students have applied themselves to this.

'I've always been a strong advocate of Liberon's Wax Polish Black Bison Paste, which really brings out the beauty of wood, but this competition has highlighted its attributes even more. I'm hoping we can repeat a similar competition with Liberon later this year,' adds Mr Underwood.

The waxing of furniture has been carried for hundreds of years and whilst traditional beeswax has its place, it is a good idea to seek out a solid wax with a modern formulation, which makes it more hardwearing.

Liberon recommends choosing one with a good content of carnauba wax. This wax is found on the leaves of the carnauba palm, which is native to north-eastern Brazil.

It is known as the "Queen of Waxes" and contributes to the superior durability of the complete wax formulation, making it ideal for nourishing and protecting all types of wood, including lacquers and French polishes.

Liberon's Wax Polish Black Bison has a good content of carnauba wax and, being highly lustrous, makes wood look simply beautiful. Made from a blend of waxes, it provides excellent resistance to finger and water marks and is ideal for small surfaces, such as chairs.

Known for its high quality and pleasant, distinctive aroma, it feeds, polishes and helps to prevent wood drying out and has traditionally been used on antiques.

For further information tel Liberon on 01797 367555.
Visit www.liberon.co.uk.



Left to right: Joe Clorley, Jordan Thacker, D'Niero Osagie (joint winner), Jake Duckhouse (joint winner), Hary Quirk (runner-up) and Ashley Carroll.

To find all the latest news online go to www.industrialwoodworking.co.uk

Email us at: bill.willowe@gmail.com

A “GAME CHANGER” FOR JOINERY PROCESSING IN BUSY WORKSHOPS

IN BUSY workshops and building sites it's seemingly impossible to keep your weatherseal free of dust and dirt, resulting in time consuming cleaning after your joinery process and installation.

However, after listening to feed-back from customers, Coastal Groups claims that the company's latest innovation keeps your weatherseal looking as good-as-new throughout the whole process.

'We were hearing from our customers about the frustration of having to spend significant time cleaning down seals before delivering their finished product,' says head of sales, Adrian Welch

'Our newest offering is designed to protect your weatherseal from picking up dust, dirt and paint during machining in your workshop and installation on site, saving you considerable time and expense,' he adds.

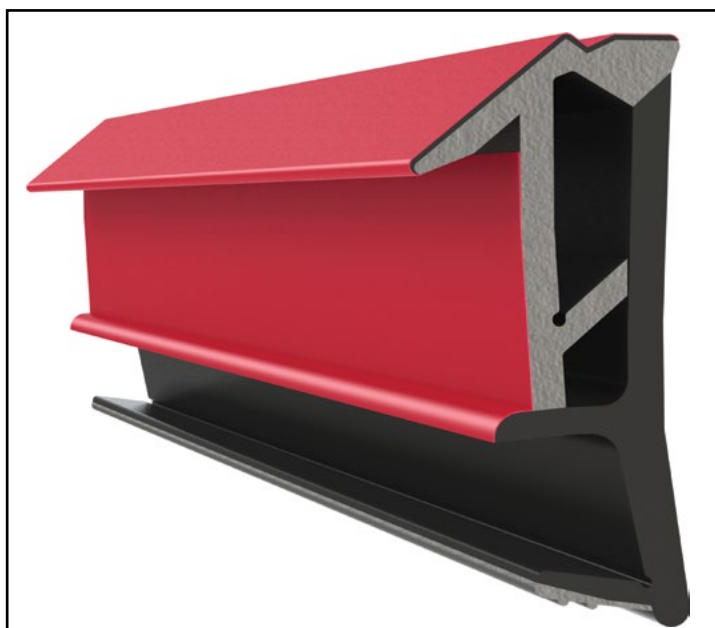
Coastal worked with Deventer to offer the popular SPV124 Weatherseal with a protective film layer over the seal. This innovation is unique to the Deventer SPV124, available exclusively from Coastal in 12mm, 15mm, 18mm and 19mm rebate sizes and in a range of colours.

'The new innovation allows customers to remove the film covering, revealing good-as-new weatherseal once their joinery project is complete, just like protective film on PVC and aluminium frames,' says managing director, Loren Jenner

'It's so fast and easy, joinery can even be delivered with the film still on and simply removed by the builder, or client once installation and construction work are complete,' adds Loren.

Coastal outlines another key benefit of the company's latest innovation - the red film makes it easy for joiners to mark with a pen when cutting for length. Once the project is complete these markings are simply removed along with the film.

As main UK distributors of Deventer, Coastal Group has a large stock-holding of the company's



high-quality weatherseal with quick delivery times.

Coastal believes that Deventer's unique offering delivers a number of key performance benefits against other seals on the market, including:

- Quick and easy to fit - with no ripples.
- Extremely low compression - for soft closing, reducing pressure on the hardware.
- Does not absorb water - Helps prevent timber from rotting.
- Superior protection from wind, water and noise - enhances the acoustic and thermal properties of your doors and windows.
- Cradle to cradle certified weatherseal - for a more sustainable solution.

There is no additional cost for the protective film layer that is added to the SPV124 and the innovation is already receiving some extremely positive feed-back, with one such bespoke quality joinery company commenting:

'The protective film has allowed us to finish our windows in a much cleaner and easier way - A complete game changer for our joinery process!'

For further information tel Coastal Group on 01726 871025.
Visit www.coastal-group.com

Thickness planer – Surface planer

T45 T54



T45 and T54: two singles – making up a perfect couple

With the T54 surface planer and the T45 planer, you get two specialists which complement each other to perfection. Unlike with a combined planer, each of the machines is designed for its respective task without any compromises.

The machine that you currently require is available immediately without requiring conversion. Thanks to the space-saving installation, the planer and the surface planer together take up hardly any more space than a combined machine. And what's more, the individual machines can be operated in parallel without any restrictions. This has particular advantages especially when working on time-critical orders. An important advantage when working on time-critical orders is that the two individual machines can be used separately.

MARTIN

www.martin.info

England and Wales

MWM Markfield Woodworking Machinery Ltd. – www.mwmachinery.co.uk

Scotland

AWMS Engineering Ltd. – www.awmsltd.co.uk

WS Woodmachinery – www.wswoodmachinery.co.uk

Northern Ireland

Electro Tech Machinery Ltd. – www.electrotechmachinery.com

Republic of Ireland

HIGH-TECH MACHINERY Ltd. – www.high-tech.ie

TOOLING - AS SILENT AS A WHISPER

LEITZ produces an extensive range of tooling for the woodworking industry. Amongst the tooling specialist's latest offering is the Diamaster range.

Diamaster WhisperCut Cutterhead

The Diamaster WhisperCut is a light and quiet cutterhead with PLUS efficiency. Due to its optimised tool body shape and low weight, noise pollution during jointing and rebating is significantly reduced and the quality of the work place is thus improved.

The resharpenability of the system with replaceable cutting edges also guarantees high cost efficiency for every individual operator.

The processing of panel material requires light and quiet tools at the same time in order to minimise the strain on both man and machine as far as possible.

The light and quiet Diamaster WhisperCut offers high cost efficiency, reduced set-up times and perfect processing results.

The tool body is made of light metal. Excellent chip collection is another useful feature. Cutting edges (up to three times resharpenable) can be realised by Leitz Service.

Diamaster EdgeExpert Adjustable Jointing Cutter

This adjustable jointing cutter provides greater efficiency in furniture construction. By adjusting the width of the innovative, adjustable diamond jointing cutters from the EdgeExpert line, unused cutting areas can be brought into the quality forming cutting area of the covered layers.

Perfect machining quality of the panel edges and significantly more efficiency in the overall process are possible using this Leitz solution.

Furniture panel processing with high quality requirements is, in many cases, an economical challenge, due to the variety of materials that can be used.

When jointing the furniture panels, greater wear of the tools results in the area of the covering layers and machining quality decreases.

As a result high costs are caused by frequent tool changes and excessive stocking on exchangeable tools.

Leitz provides the solution with the help of the innovative, adjustable diamond jointing cutters and the EdgeExpert line.

By adjusting the width of the jointing cutters, unused cutting edge areas can be brought into the quality-forming cutting area of the covering layers.

Perfect machining quality of the panel edges and significantly more efficiency in the overall process are possible with this Leitz solution.

The chief benefit of using these adjustable jointing cutters are a perfect edge quality, up to 10 times higher tool life, quick and easy resetting and high cost efficiency.

The Diameter EdgeExperts feature Hydro-Duo sleeves for maximum



The compact hogger DT Premium from Leitz offers greater efficiency in panel processing. It provides the solution for increasing productivity thanks to its long tool life - with perfect quality on the edge and cutting surface.



The Diamaster EdgeExpert Adjustable jointing cutter provides greater efficiency in furniture construction.

concentricity and axial run-out accuracy. There is RFID chip for automatic tool identification, making these cutters particularly suitable for zero joint technology and customised solutions.

Compact hogger DT Premium

The compact hogger DT premium offers greater efficiency in panel processing. It provides the solution for increasing productivity thanks to its long tool life - with perfect quality on the edge and cutting surface.

Thanks to the new tooth shape, optimum machining results are achieved over the entire life cycles of the tool.

The design enables efficient chip removal and the vibration-reducing tool body further increases the tool life and thus the economic efficiency.

Manufacturers are facing major challenges, due to their customers demanding changing quantities, as well as requesting a wide variety of carrier and decorative materials to be used in panel production.

The new DT Premium compact hogger provides the solution for increasing productivity thanks to its long tool life - with perfect quality on the edge and cutting surface.

On account of the new tool shape, optimum machining results are achieved over the entire life cycle of the tool.

The design enables efficient chip removal. The vibration-reducing tool body further increases the tool life and thus the economic efficiency.

Benefits include long tool life across a range of materials and perfect quality on the edge and machined surface.

There is constant cutting width over the entire tool life cycle. Two different tool shapes are available and there is a DFC shipbreaker and gullet area, as well as damping element on the tool body.

This diamond tipped compact hogger is up to 15 times resharpenable and it is therefore suitable for all conventional panel materials.

Resharpener and Tool Repair

Tools like new - this is the philosophy of maximum tool life and perfect machining quality throughout the entire life cycle of all Leitz tooling products.

The Leitz tool service plays a decisive role here. Taking into account the highest quality standards, Leitz is able to re-grind tools of every kind and every manufacturer and to supply them in manufacturer quality to the customer - in more than 150 countries throughout the world.

For further information tel Leitz on 01279 454530.
Visit www.leitz.org e-shop: <https://shop.leitz.org/>

To find all the latest news online go to www.industrialwoodworking.co.uk

Email us at: bill.willowe@gmail.com

Wood Waste Control

Your complete extraction solution



- dust extraction systems •shredders
- chippers •briquette presses
- warm air heaters

01628 525290

info@woodwastecontrol.co.uk

W W C

WOOD WASTE CONTROL (ENG) LIMITED

www.woodwastecontrol.co.uk

THE GROUND-BREAKING, USER-FRIENDLY T29 SPINDLE MOULDER FROM MARTIN

THE T29 spindle moulder from German manufacturing giant, Martin features a thoroughly user-friendly, state-of-the art control system.

Indeed, the key feature of this machine is the innovative control system, which is designed to support the user in all manner of tasks.

This enables the machine to be used effectively and economically, allowing it to make a considerable contribution to increasing the efficiency of any joinery workshop.

The spindle moulder's tilting arbor also opens up a whole new range of possibilities.

Previously, users had to carry out all of the measurements and settings for the tools themselves and this occupied a great deal of time.

With the Martin T29 spindle moulder, users are supported by intuitive electronics, with up to seven electronically displayed and controlled axes.

Setting up the Martin T29 spindle moulder is thus simple and hassle-free!

Innovative design

The T29 spindle moulder's electrically adjustable ring inserts provide the perfect solution for closing the gap between the tool and the table.

Fully integrated into the control system, they facilitate the set-up process enormously. By simply specifying a value, or moving them manually, you can open, or close the eccentric rings and thus the gap, continuously.

Fence jaw system

Thanks to the optional AutoLock fence jaw clamping system on the T29, you can ensure that the secure clamping of standard and integral fence jaws are completed in a simple and safe manner.

Always clamped securely by spring force, the jaw clamping is only released for setting with the easily accessible levers. This is carried without any electrics, or pneumatics.

Collision detection

During the set-up process, if a tool is accidentally moved on to a collision

course with the machine, it will automatically detect the issue and warn the operator. This ensures a very high level of safety for the user, even for inexperienced operators.

The machine software also prevents collisions between the machine components in the border areas of the travel paths of the table rings and the spindle sleeves.

Arbor quick change

There are two options available with the T29; the DornFix standard quick-change system and the HSK quick-change system.



The electrically adjustable ring inserts provide the perfect solution for closing the gap between the tool and the table. By simply specifying a value, or moving them manually, you can open, or close the eccentric rings and thus the gap, continuously.



The T29 spindle moulder from Martin features a user-friendly, state-of-the art control system, designed to support the user in all manner of tasks.

To find all the latest news online go to www.industrialwoodworking.co.uk

Email us at: bill.willowe@gmail.com

The T29's HSK quick-change system works fully tool-free and is compatible with the CNC processing centres of leading manufacturers.

The T29 works fully tool-free and is compatible with the CNC processing centres of leading manufacturers.

You can use suitable CNC machining centre tools directly on the spindle moulder, relieving this machine from capacity-consuming traversing moulding tasks.

Complete control

Setting up one of these machines can be very time-consuming and a real challenge for a busy workshop.

However, the Martin T29 spindle moulder has an innovative, user-friendly control system, which lets users work highly efficiently and effectively, all thanks to its intelligent network.

The new ConnectControl system offers the possibility of managing your tool data from a central location typically the production planning department. This means that not just one machine, but all machines with access to ConnectControl technology, are updated with the latest data.

Reliable technology

Thanks to the T29 spindle moulders' tool conversion system, (which is integrated as part of the standard version), it takes no time at all to set up complex moulding patterns, especially those with tilted spindles.

This means that any user can efficiently and effectively make use of the large tilting range of 2 x 46° – and can follow your instructions perfectly.

Repeatability, process reliability and durability, combined with an intuitive, innovative control system is what makes the Martin T29 spindle moulder the perfect addition to any workspace.

Workshop efficiency

Thanks to integrated ConnectControl technology, every T29 can be networked quickly and easily.



During the set-up process, if a tool is accidentally moved on to a collision course with the machine, it will automatically detect the issue and warn the operator.



The T29's HSK quick-change system works fully tool-free and is compatible with the CNC processing centres of leading manufacturers.

ConnectControl is the umbrella term for the patented control concept that characterises the latest generation of formatting saws and spindle moulders from Martin.

It is because of this integration, that users can add further machines into the system, making it possible to control an entire workshop digitally.

Different machines can be taken into account from the project planning stage. The Cloud-based control system also ensures smooth and streamlined cooperation between several users.

*For further information tel 00 49 8332 9110.
Visit www.martin.info*



The Martin T29 spindle moulder has an innovative, user-friendly control system, which lets users work highly efficiently and effectively, all thanks to its intelligent network.



Thanks to the T29 spindle moulders' tool conversion system, which is integrated as part of the standard version, it takes no time at all to set up complex moulding patterns, especially those with tilted spindles.



The innovative control system, which is designed to support the user in all manner of tasks enables the machine to be used effectively and economically, allowing it to make a considerable contribution to increasing the efficiency of any joinery workshop.

To find all the latest news online go to www.industrialwoodworking.co.uk

Email us at: bill.willowe@gmail.com

A PRECISE & FLEXIBLE COMPACT SAW

WHETHER for floor laying, exterior construction, timber construction, or interior finishing, all trades need a compact saw that is precise, reliable and, most importantly, completely flexible.

With its new KSC 60 cordless sliding compound mitre saw, Festool has done away with the cable, making this handy all-rounder with Li-ion battery power and the latest generation brushless motors a real front runner.

The latest generation of brushless EC-TEC motor, combined with the dual battery system, ensures maximum power that lasts the whole day.

Festool keeps on adding to its extensive range of cordless tools: the battery-operated Kapex KSC 60 is exceptionally strong, yet ultra-flexible in operation thanks to its mitre angles of up to 60 degrees on both sides and the bevel angle of up to 46 degrees (on the right-hand side), or 47 degrees (on the left-hand side).

The twin-column guide with two bearings ensures that the saw blade is guided smoothly and with precision. This makes every cut perfect, without wobbles, or juddering.

The LED spotlight transfers the shadow of the saw blade on to the material to act as a precise cutting line, whilst also providing optimum visibility of the scribe mark.

The KSC 60 is supplied ex-works with a dust collection bag, making it ideal for portable use and smaller sawing jobs.

A handy bevel is also included as standard. This makes the rapid measurement of interior and exterior angles and subsequent transfer to the saw simple and precise.



A particularly clever detail is the additional feet, which allow the work-bench on the KSC 60 to be raised to the exact height of the SYS 3 M 112, or SYS 1 Systainer in just a few steps. It can then be used as a work-bench to support long workpieces safely and securely.

Brushless motor power – battery power that lasts all day

When it comes to power and performance, the Kapex KSC 60 does not fall short of its corded sister, the KS 60. This is down to the perfectly harmonious interplay between battery and motor.

‘The KSC 60 features the latest generation of brushless EC-TEC motors,’

explains product manager for saws at Festool, Boris Seyfried speaking on behalf of the company.

‘It is characterised by its compact design, low weight and high efficiency,’ he adds.

This, together with the variable speed preselection, means that the saw can adapt to suit the material.

Combined with the high-quality saw blades for wood materials, laminate, or aluminium, the resultant precision is no coincidence.

The intelligent dual battery system gives the saw more torque and range, meaning that the KSC 60 can be operated with one, or two 18-volt battery packs from Festool and offers enough power for the entire working day.

The compact design, incorporating flush-mounted guide rods, ergonomically positioned carry handles and a convenient transport safety device, means that there is no limit to the new KSC 60's portability, making it ideal for use on construction sites.

Typically Festool: clever as a system

The whole package is neatly rounded off with system accessories perfectly matched to the KSC 60.

These include saw blades for every application, which – when combined with the speed pre-selection – guarantee a perfect cutting result and sawing that adapts to suit the material.

The underframe for the KSC 60 is a stand and a transport frame in one – for even easier transportation of the Kapex KSC 60. It takes the Kapex KSC 60 up to a working height that is easier on the back and can be set up quickly and easily using a cleverly designed folding mechanism.

You can work without interruption, using the energy set recommended for the KSC 60.

It comes with two 5.2 Ah battery packs and a dual charger in the new Systainer³. In the Systainer³, two batteries can be charged at a time.

Completely covered

Festool chargers and battery packs, like all Festool tools are completely covered by Festool SERVICE, giving you peace of mind for your day-to-day work.

The new KSC 60 cordless sliding compound mitre saw is now available from authorised dealers throughout the UK.

For further information tel 01284 760 791.
Visit www.festool.co.uk

To find all the latest news online go to www.industrialwoodworking.co.uk

Email us at: bill.willowe@gmail.com

REDUCING RUNNING COSTS AND IMPROVING PRODUCT QUALITY WITH THE HELP OF LEITZ

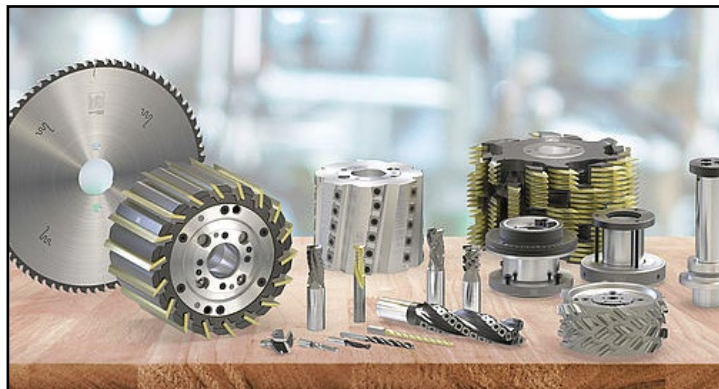
As a world market leader, Leitz in the UK not only offers a wide range of innovative tooling solutions based on the latest technical standards, it also offers the largest number of wood machining technical engineers who are on hand to support the wood processing industries for all production and tooling-related questions.

In a complete package of tailored tooling programs, application and safety seminars, the Leitz specialists pass on their knowledge to their customers.

With these professionally prepared service and tooling solutions, companies of all sizes will be able to reduce running costs – labour, downtime and waste – and improve product quality.

In addition to its distribution centre, sales office and service centre in Harlow Essex, Leitz operates its tooling service through an additional seven outlets throughout the UK. These depots are located at:

- Unit 14, The Calvert Centre, Woodmancott, Winchester, SO21 3BN. Tel 01256 397209.
- Unit 2, Fort William Industrial Estate, Dargan Crescent, North Foreshore, Belfast, BT3 9JG. Tel 02890 776482.
- Unit 3, Ferry Steps Industrial Estate, Albert Road, Bristol, BS2 0XW. Tel 0117 977 8808.
- Unit 47B, Avenue 4, Chilton Industrial Estate, Chilton, Durham, DL17 0SQ. Tel 01388 72257.
- Unit 8, Wren Court, Grovewood Business Centre, Strathclyde Business Park, Glasgow, ML4 3NQ. Tel 01698 843117.
- Unit 16, Millshaw Park Avenue, Millshaw Industrial Estate, Leeds, West Yorkshire, LS11 0LR. Tel 0113 420567.
- 5 Middleton Central Industrial Estate, Oldham Road, Middleton, Manchester, M24 1AZ. Tel 0161 654 0494



With over 130 years of experience Leitz is recognised for the latest tooling solutions for all sizes and type of company.



Whispercut on CNC.



Leitz UK's main distribution centre, sales office and service centre is located in Harlow in Essex.



Tooling systems for solid wood applications

With this national network of saw and tool sharpening centres, Leitz Tooling UK offers excellent local customer support, ensuring that the company's saws and tools are sharpened and serviced to original manufacturer standards, thus maintaining quality and efficiency.

Leitz UK is committed to quality being certified to ISO9001:2015 as is the Leitz Group.

Founded over 140 years ago in Germany, the Leitz Group is a worldwide leading manufacturer of tools for industrial processing of wood, wood derived materials, plastics, compound materials and non-ferrous metals. The product spectrum covers the complete range of precision tools for automated machines.

With seven production locations in Europe, Asia and America, sales companies and offices in 38 countries, 120 service stations with quick-production facilities, as well as sales partners, Leitz is represented on all continents.

*For further information tel Leitz on 01279 454530.
Visit www.leitz.org e-shop: <https://shop.leitz.org/>*



Eroding diamond-tipped tooling systems.

To find all the latest news online go to www.industrialwoodworking.co.uk

Email us at: bill.willowe@gmail.com

IDS IS INTRODUCING FUNDERMAX PREMIUM STAR SUPER MATT AND HIGH GLOSS LACQUERED PANELS

SPECIALIST surface materials distributor, IDS has introduced the Fundermax Premium Star range of super matt and high gloss lacquered decorative panels, combining sophisticated technology with superior visual effects.

Premium Star UV-coated panels offer significant design scope in high-end residential and commercial settings, thanks to the multi-layer lacquer, which ensures long-lasting colour and a luxurious look and feel.

The panels are ideal for a wide range of vertical applications including furniture, kitchen fronts, partitions and more.

The exclusive UK collection offers a choice of five popular décors in both the super matt and high gloss finishes, which are available from stock in 24-48 hours with no minimum order quantity. Seven further décors and additional thicknesses are also available on extended lead times.

The range spans classic whites, earthy neutrals, grey in varying shades and elegant black.

The super matt Aptico (AP) single sided 2,800mm x 2,070mm panels feature patented anti-fingerprint technology to ensure a luxurious, yet hard-working surface.

The panels have an FSC certified chipboard P2 core, which meets emission class 05 and are coated with UV resistant multi-layer coloured through lacquer, which provides the opportunity to match any Pantone, or RAL colour on a made-to-order basis (MOQs apply).

The super matt panels are resistant to solvents, household cleaners, scratches and abrasions. They are available in 10-25mm thicknesses with 19mm available from stock.

Premium Star's super gloss (SG) panels feature a high gloss mirror finish which guarantees maximum aesthetics.

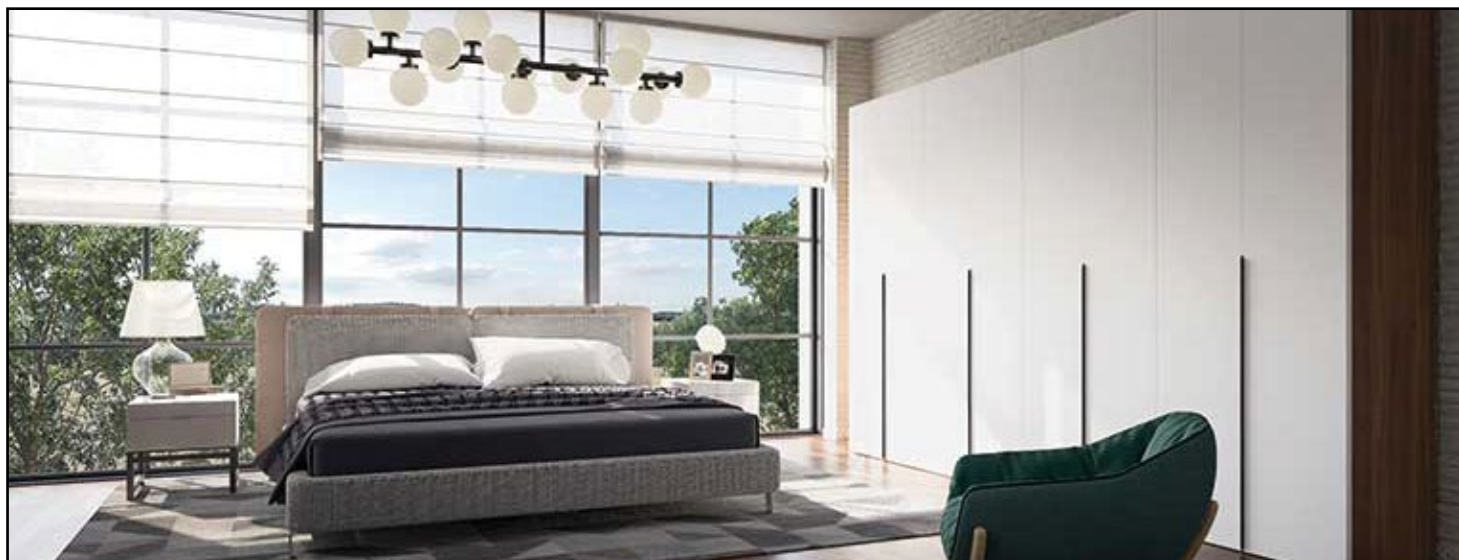
The single-sided panels are resistant to heat, chemicals, solvents and scratches.

They feature an FSC certified MDF class E1 core and the high gloss effect is achieved through a UV resistant multi-layer coloured through lacquer, which includes a flexible primer layer to provide a much-improved edge when cutting. Likewise measuring 2,800mm x 2,070mm, the super gloss panels come in 10.3mm to 25mm thicknesses with 19.3mm available from stock.

Fundermax Premium Star is available from IDS's 16 regional branches.

For further information tel IDS on 0845 7298 298.

Visit www.idsurfaces.co.uk



To find all the latest news online go to www.industrialwoodworking.co.uk

Email us at: bill.willowe@gmail.com

FORMAT 4®

SHY AWAY FROM LIMITS!

profit H350R **FIVE AXIS MACHINING FOR UNIVERSAL WORKSHOPS**

**Modern CNC woodworking with individual flexibility
as efficient and simple as possible.**

- + Five axis spindle for unlimited creativity
- + F4®Solutions software – Be it cabinets, windows, doors or more
- + Gantry design, synchronised drive, solid construction for maximum accuracy
- + lightPos – LED vacuum pods positioning – quick, easy & precise

For more information and to request an offer, please visit www.felder-group.co.uk



FELDER GROUP UK Ltd.

Unit 2 Sovereign Business Park, Joplin Court, Crownhill, Milton Keynes, MK8 0JP
Immediate Info Tel. 01908 635000, www.felder-group.co.uk

SJG INTERNATIONAL LTD IMPROVES EFFICIENCY AND ACCURACY WITH ADVANCED CNC ROUTERS AND WATERJET CUTTING SOLUTIONS FROM GLOBAL MANUFACTURER, AAG

AAG is a leading global manufacturer of CNC routers and waterjet cutting solutions, focused on helping companies of all sizes to improve their automation.

With over 30 years of experience, AAG has built and installed thousands of CNC and waterjet cutting systems across a wide array of industries. AAG is a world leader in producing cutting system that will help your business grow and expand to exciting new levels.

One of the companies that they have supplied is SJG International Ltd - an award winning, market-leading manufacturer of rubber extrusion, gaskets and foam conversions.

The company supplies gaskets, washers and sheeting material to a wide range of customers, including military and defence to automotive and rail, sports and leisure and many more who need sealing solutions for various applications.

SJG International Ltd works with the company's customers to produce rubber and foam solutions that seal, insulate, protect and cushion in often difficult and challenging environments and can assist at every stage of the process, from designing a first prototype to choosing the right materials.

Employing 50 staff, everything that is produced is designed, tooled and manufactured at the company's custom-built unit in Alcester.

director, Rachel Russell explains:

'We have a close relationship with AAG and that has made it easier to work with them to bring new machinery and ideas into the business.

'As the machines are versatile with cutting, routing and knife cutting, it has allowed us to be more flexible and this has made it easier in attracting a wide variety of clients.

'Thanks to the continued innovation such as five-axis cutting, made possible using our WARDJET cutter from AAG and our customer service, we have built a loyal customer base across the world,' says Rachel.

There are five models in the AXYZ router range; all with their own unique options and versatility to cross over infinite markets.

The routers are controlled by AAG's A2MC controller, or the industry leading control interface MOVE that drives all machine tasks and is designed to optimise the operation of the CNC machines, perform tool changes, set up your work offsets, call up a new file, or optimise the cutting speed. MOVE is designed to make machine operation easy and intuitive.

Currently SJG International Ltd has four AXYZ routers in its portfolio of machines which has enabled the production of components with improved accuracy and consistency, reducing the risk of errors and improving the overall quality of its products and reducing lead times and costs.

Additionally, in the machine make-up of SJG International Ltd is the J-Series WARDJET waterjet - a high-precision cutter that enables the company to produce components with complex shapes and designs, with minimal waste and improved accuracy.

The WARDJET series is offered in varying sizes to adapt to the customers' floor space. The versatility at the manufacturing stage means that machines can be bespoke and built to customers' precise requirements - be it the need for a greater Z-travel, or custom fixturing in the table or tooling configurations - WARDJET can incorporate the customer's needs.



SJG International Ltd has full CAD design capabilities in-house and can work from a drawing supplied by the customer, or create one to individual specifications and requirements.

For this to happen they required a machine supplier that had the same exacting standards that they themselves have achieved.

SJG International Ltd chose AAG and uses AXYZ routers and WARDJET Waterjets as part of its manufacturing process for rubber extrusion, gaskets and foam conversions.

The use of these advanced technologies from AAG allows SJG International Ltd to produce high-quality components with improved efficiency, speed and accuracy.

When asked why they chose AAG as their preferred supplier, purchasing

The use of these advanced technologies helps SJG International Ltd to meet the growing demand for high-quality components that make industries safer and drive innovation.

The combination of AXYZ routers and WARDJET Waterjets allows the company to produce components that exceed industry standards and customer expectations whilst, at the same time, improving its efficiency and competitiveness in the market.

For further information on the AXYZ range of routers tel the company on 01952 291600. Visit www.axyz.com

For further information on the WARDJET range of waterjets tel the company on 01952 291600. Visit www.wardjet.com

To find all the latest news online go to www.industrialwoodworking.co.uk

Email us at: bill.willowe@gmail.com

STRAIGHT TALKING: FRONT ALIGNERS ENHANCE CUTTING EFFICIENCY & ACCURACY

BIESSE can now supply its Selco SK4 and WN250 beam saws – including those with automatic storage – with productivity-boosting front aligners.

Biesse's Selco beam saws can either be loaded from the front, or from the back. Rear loading is either via an integrated lift table, or an automatic loading system that picks panels and places them into the back of the beam saw.

Even though both loading methods are automated, there is no guarantee that the panels in the stack will be aligned with one another. In order to achieve an accurate, parallel cut, it is essential that the boards are aligned and correctly positioned at the cutting line.

Why manual alignment isn't the answer

One way of ensuring this is to station an operator next to the beam saw to



manually align the panels. The main drawback with this approach is that it is inefficient; the machine has to stop and alert the operator to align the stack. The operator has to physically push the panel stack against the grippers and then tell the machine it is aligned so it can continue with the cycle. There is also a Health and Safety consideration: panels are heavy and this is a strenuous, physically demanding and repetitive task to perform manually.

In order to eliminate the need for manual intervention, Biesse has, for some time, equipped its larger machines (Selco WN6 and above) with front aligners.

These pneumatic devices automatically rise from the machine bed when the pusher is moving the stack towards the cut line; the grippers push the stack forwards until it reaches the front aligners.

Once the stack is in the correct position, the front aligners retreat, the grippers push the stack to the cutting line and the beam saw subsequently performs the required cutting cycle.

Making technology accessible to all

In the past, front aligners were only available on larger machines. However, in line with its commitment to making its pioneering technologies accessible to all customers, Biesse has adapted the front aligner principle for its SK4 and WN250 series too.

This required modification of the original design, which could not be accommodated within the available space.

Now, manufacturers of all sizes can benefit from the productivity, quality and labour saving benefits that this clever alignment technology brings to the woodworking and furniture industry.

For further information tel Biesse on 01327 300366.
Visit www.biesse.com

Dear Customer,

Did you know we have extended our product range to include:

Slitting Blades, Nordson compatible replacement hoses and Rings for BM 200 and BM 20 and generally anything to do with Profile Wrapping!

WE ALSO SUPPLY MOULDER WHEELS & HEAT GUNS AND SPARE PARTS FOR ALL HEAT GUNS



07484 341294
arook.ba@gmail.com
www.britishadhesives.co.uk

To find all the latest news online go to www.industrialwoodworking.co.uk

Email us at: bill.willowe@gmail.com

GELO HOLZWERK RELIES ON WASTE WOOD PROCESSING FROM VECOPLAN AT THE WUNSIEDEL BIO-ENERGY PARK

MAKING the best possible use of local natural resources and networking them with each other – that's one of the core concepts pursued by the Wunsiedel Energy Park. WUN Bioenergie is a joint venture of the SWW Wunsiedel GmbH and the GELO Sawmill from Weissenstadt.

GELO primarily manufactures from building, or construction timber, available in abundance in the Fichtel Mountains.

The waste wood in the energy park is processed into pellets, which are sent to a large biomass combined heat and power plant (CHP).

The sawmill operator relies on high-performance shredding and conveyor technology from Vecoplan to process the waste wood for this purpose and thus maintaining its sustainability credentials.

'The sawmill industry experienced strong cut-throat competition between 2008 and 2018,' reports owner and managing director of the GELO Sawmill in Weissenstadt, Upper Franconia, Wolf-Christian Küspert.

'About 30 per cent of the timber companies disappeared from the market and those that managed to survive lost a fair amount of ground. This also created an enormous investment backlog in the industry, which is only now being gradually cleared,' he adds.

Wolf Christian Küspert took over the family business from his father in 2003. The company was founded as a sawmill as long ago as 1898.

With around 600,000m³ cut annually, it is now one of the largest wood processors in Germany and part of a state-of-the-art wood processing industrial site.



The waste wood falls directly from the sawmill on to the conveyor system, ready for the next stage of pellet production.



GELO Timber has built the world's most modern, small-dimensioned wood sawmill in Wunsiedel in the Fichtel Mountains.

'We provide different finishing steps on site, so our customers get everything from a single source,' says Wolf Christian Küspert.

In 2011, the company founded the WUN Bioenergie GmbH in Weissenstadt, together with the Wunsiedel Public Utilities (SWW). With its attached biomass CHP, the subsidiary produces energy from renewable and, above all, regional sources.

No waste is produced at GELO, because the trees are entirely recycled: wood chips generated during production end up in the pulp industry. The sawdust is pressed into pellets that provide electricity and sustainable heat for regional households.

'We have constantly expanded the Weißenstadt site,' says Wolf Christian Küspert.

'However, we reached our limits in terms of space,' he adds.

The logical solution for continued growth was a new site. An ideal location was found in Wunsiedel, just a few kilometres away and the new energy park there soon hosted a CHP and a pellets facility.

The wood processing company built the GELO sawmill in the energy park – probably one of the few German greenfield projects constructed in recent years.

The smell of freshly sawn wood is in the air.

'We have built the world's most modern small-diameter timber sawmill here,' says Wolf Christian Küspert pointing to the new hall.

Small-diameter wood is an excellent timber with firmly intergrown branches. With this project, the company also supports the increasing amount of forest conversion, which is occurring because climate change is causing older trees to die earlier and regrowing trees have to be felled more quickly.

'The wood has a top diameter of about 25cm, or less,' explains Wolf Christian Küspert.

'Small-diameter wood always means a great deal of waste wood,' says Wolf Christian.

'That's because the smaller the diameter, the higher the percentage of waste wood when we saw



The conveyor system transports the material to the individual stations.



The star screening machine separates excess lengths from the material.

out a rectangular cross-section,' he explains.

The sawmill in Wunsiedel processes mainly spruce – around 350,000m³/year.

Efficient processing of waste wood

In order to prepare the sawdust and wood chips for pellet production, GELO Timber relies on Vecoplan – as it has done for years in Weissenstadt.

Vecoplan, the specialist for processing residual materials, is headquartered in Bad Marienberg in the Westerwald region.

The company develops plants to shred, convey, separate, and store wood, biomass, plastics, paper and household and commercial waste.

'Our tasks include consultancy, planning and finding solutions. We provide integrated project management, including installation, commissioning and comprehensive service,' explains regional sales manager in the wood biomass division at Vecoplan, Michael Mützel.

Vecoplan was involved in the project from the very beginning.

'We received the order in January 2020,' says Michael Mützel.

'We accompanied the planning phase and were able to build our facilities on the greenfield site during the new construction,' he adds.

The delivery date was in the summer of 2020. Installation and commissioning took place in November.

Wood chopped into small pieces

Motor noise fills the hall.

Vecoplan expert, Michael Mützel points to the equipment installed by the Vecoplan team. From the saw line, sawdust and chips fall through the

floor of the saw hall on to a long conveyor belt.

The conveyor technology transports the material to a star screen to separate excess lengths. The matching waste wood falls on to another conveyor belt.

The screened excess lengths and offcuts from the board sorting are transported to the drum chipper via belts and vibrating conveyors. These feed the material to be processed horizontally to the machine.

Vecoplan technicians adapted the chipper to match the sawmill's tasks and achieved a homogeneous and high-quality result.

'Our series is extremely compact,' says Michael Mützel.

'The shredding principle reduces the waste wood to a chipping length of about 10mm to be fed directly to the drying process in the pellet plant opposite,' he adds.

The chips produced by the chipper are then fed back on to the long conveyor belt under the saw line. A chain conveyor takes the waste wood, which has been freed from excess lengths, out of the hall, together with the material rated as good by the star screen and transfers it to an approximately 40m long VRF pipe conveyor in the direction of the pellet mill.

So that nothing is lost

'This series consumes about half as much electricity as similar conveyor belt systems,' Michael Mützel reports.

The VRF transports the material across the yard to the storage boxes and a screening station. In order to ensure that nothing is lost, the tubular system completely encloses the material, so that neither wind, nor storm can blow it away.

The conveyor belt in this series passes through a tube; it does not run on rollers as in conventional conveyors. Since an air cushion supports the belt, only minor friction losses occur during operation. It also runs quietly, which makes for a more pleasant atmosphere on the premises.

Each drive station is equipped with two scrapers. Users can adjust the front head scraper and the carbide scraper from outside the machine. The components can be re-tensioned quickly and easily with a ratchet.

The front head scraper is flexible, but strong enough to remove extraneous materials from the belt. The carbide scraper is more thorough and prevents resin, for example, from sticking to the belt.

These scrapers reduce maintenance time, increase equipment availability and reduce material carry-over.

The system conveys the material at a maximum of 2.5m/sec. Another Vecobelt, approximately 80m in length, carries the waste wood from the screening station to the pellet plant.

An optimal location

'The transport routes here are short and energy-saving, so that we can save several thousand truck trips a year,' says Wolf Christian Küspert.

The pellets are not only sold regionally; they are also supplied to various wood pellet gasifiers operated by the Stadtwerke Wunsiedel, GELO and other partners.

The electricity generated is fed into the grid. The heat supplies local networks in neighbouring districts and the power plant also transfers its waste heat to the pellet plant to dry the chips.

'A project this big can only succeed with the right partners. In order to reduce the complexity, I have to be able to rely on them,' says Wolf Christian Küspert.

'With a partner like Vecoplan, I know that things will run smoothly. And if things don't work out, their experts know exactly what to do,' adds Wolf Christian Küspert.

The time frame of the project was tight. Covid-19's entry restrictions delayed the work of the installation crews from Finland and Portugal.

Still, the wood processing company was finally able to start its regular operations at the end of February 2021. And just three months later, the company was already running at a stable 80 per cent of its total capacity.

For further information tel Vecoplan AG on 00 49 2661 62670.
Visit www.vecoplan.com

THE REVOLUTION IN TABLE SAWS

Festool presents the new CSC SYS 50 cordless table saw

EXTREMELY compact and versatile: with its modern and sophisticated design, which includes digital technologies, Festool's new CSC SYS 50 cordless table saw redefines industry standards.

What's more, the new cordless table saw is so compact that it fits perfectly into a Systainer.

This means that the new CSC SYS 50 delivers the same cutting precision on construction sites as a mains-powered panel saw does in a workshop.

It performs excellently in every discipline, with parallel cuts up to 280mm, a cross cut width of up to 450mm and angled cuts of -2 deg to 47 deg.

Precise cuts at the press of a button, compact dimensions and a state-of-the-art operating concept – these are the ingredients that make up the new CSC SYS 50 cordless table saw.

These features make it an indispensable aid for interior finishing, as well as for carpenters and floor layers.

Its centrally positioned and easy-to-read display allows you to adjust the height and angle with absolute precision and in next to no time. This enables 100 per cent repetition accuracy – cut after cut.

In practice, it is more precise than with any yardstick. You can make even the most demanding cuts with maximum precision with the robust stop system made up of a parallel side fence, angle stop and sliding table.

'The CSC SYS 50 is claimed to be the world's first portable table saw with electric height and angle adjustment and a display with menu navigation. This means that the new CSC SYS 50 marks a step towards digitalisation,' says product manager of the new cordless table saw, Wolfgang Reines.

'However, when we implement digital technology, we always focus on the benefits to customers.

'The CSC SYS 50's digital functions are not a gimmick, but offer real added value with respect to precision and enable a cutting quality of unprecedented consistency in a portable saw.

'Essentially, the CSC SYS 50 offers all the qualities of a contemporary panel saw, but you can also take it with you on to construction sites,' explains Wolfgang Reines.

State-of-the-art operating concept

The key feature of the CSC SYS 50 is the centrally positioned display, with its non-slip dial and two buttons at the side. This enables you to



effortlessly save up to four saw blade positions in just a few steps.

Another clever detail is that linking the table saw to the Festool Work App enables additional saw blade positions to be saved. You can use the display to electrically adjust the height and angle at the press of a button – accurate to a tenth of a millimetre.

The height and angle (available in millimetres and inches) are set parallax-free via the digital display and are therefore more accurate than any visual judgement.

In addition, you can pre-select speeds appropriate for the material via the digital display.

'Work usually needs to be undertaken quickly on a construction site. You often need to saw a rebate, groove, or a flattening and are initially focused on measuring and setting the correct saw heights. The CSC SYS 50 makes this a thing of the past.

'In just a few steps, you can consistently set the height to within a tenth of a millimetre – without the need for any tedious measuring.

What's more, in the special position of -10 deg, you can cut infill panels to size very quickly, accurately and without splinters,' continues Wolfgang Reines.

Mobile sawing applications just like in the workshop

In addition to its state-of-the-art operating concept, the new Festool CSC SYS 50 typically impresses customers with extremely precise sawing results, which are in no way inferior to a mains-powered saw when it comes to precision and quality.

This is thanks to, among other features, the high-precision parallel side fence with double clamping (via a single lever).

Moreover, it has a highly precise angle stop, which can be optimally aligned and centrally clamped via a groove on the slide and enables mitre angles of between -70 deg and +70 deg.

The ball bearing-mounted slide can be moved completely smoothly. This ensures parallel and angled cuts with maximum precision.

Another practical detail is that, in the limited range of a cutting height of 35mm, it is even possible to make angled cuts of up to -10 deg.

This is ideal for undercutting infill panels, because the field of vision in which the workpiece is to be cut is at the top.

For further information tel Festool on 01284 760791.
Visit www.festool.co.uk



The Woodwork Dust Control Co Ltd

Leaders in Dust Control Technology

A Complete Wood Waste Extraction Service to all Timber Industries

- ★ Design, Manufacture, Installation
- ★ Large hopper filters, fans, cyclones
- ★ Small bag filters, rigid ductwork, flexible hose
- ★ LEV COSHH testing, assessment, service
- ★ EWI-THERM Wood burning stoves
- ★ Fast nationwide service



Contact us for our FREE product catalogue:

Tel: 01844 238833 Fax: 01844 238899

Email: enquiries@woodworkdustcontrol.co.uk

Web: www.woodworkdustcontrol.co.uk



SOME PIECES BECOME CLASSICS - OFTEN WITH EDGES SUPPLIED BY HEITZ

WHY do some furniture pieces become successful classics around the world? Product characteristics such as design, material and function play a key role. Appearance, feel and function are decisive criteria for customers when they make a purchase. If the piece is practical, easy to assemble and versatile as well, it is likely to become a popular and classic choice.

Veneer edgings are key details and not to be underestimated. Heitz has made a name for itself around the world as a veneer edge specialist and is a global market leader based on sales and turnover.

Little wonder then that global furniture brands appreciate the level of quality Heitz is able to deliver. The company, with its headquarters in Melle, Germany, maintains sites in the USA and Hungary, proving that companies can build a strong international profile even in niche markets.

Heitz can handle more than just large production series for major

furniture companies and is also working with customers who need specialised solutions, including small production runs.

No matter the material requirements, or finishing needs, designers and manufacturers should reach out to Heitz. The company is always seeking new challenges and is ready to develop innovative, custom solutions.

Heitz considers unique, or exclusive requirements to be an opportunity to advance its company's technological capabilities and expand a range of services.

For further information visit www.heitz.de



TWO NEW APPOINTMENTS MADE AT IPSWICH-BASED COMPANY

IPSWICH-based Apex Joinery, part of The First Interiors Group, continues to expand at pace, appointing Wayne Hines as joinery manager and Ben Stiff as workshop manager.

In his new role, Wayne, aged 53, is responsible for the smooth day-to-day operations of Apex Joinery, organising the workflow, overseeing the team and ensuring that all Health and Safety regulations are maintained.

Wayne began his career as a joiner at Taylor Made Joinery before being promoted to contracts manager, followed by workshop assistant manager. He joins Apex Joinery from Monarch Joinery, also based in Ipswich, where he was workshop manager for eight years.

Having worked on a number of high-profile contracts, including the re-build of Windsor Castle after the fire and refurbishment works at Downing Street, Wayne has enjoyed a varied career.

'I was attracted to Apex Joinery, as it is a well-established company with a good reputation for supplying high-quality joinery to local businesses, private clients and commercial joinery projects. I hope to help the company further its success in the coming years, sharing my knowledge, skills and experience with the team,' says Wayne.

Ben, who has worked at Apex Joinery for 19 years, has been promoted and, as workshop manager, he will manage the shop floor, as well as the quality and control of the output of the factory. He will also be heavily involved in the site's survey, design of the joinery items produced and estimates for larger projects.

Ben will work alongside Wayne. With the appointment of three new joiners at Apex Joinery also, the duo is perfectly placed to lead the expanding team, which now comprises 10 joiners.

'Wayne is a talented joiner with excellent managerial experience. We are delighted to welcome him to the team and are confident that he will play a large part in our future growth plans,' says head of group sales & operations, Mike McVey.

'Ben's involvement with Apex Joinery is second to none and his professionalism is superb. He is a major asset to the business,' adds Mr McVey.

For further information visit the company website on: www.firstinteriorsgroup.com



To find all the latest news online go to www.industrialwoodworking.co.uk

Email us at: bill.willowe@gmail.com

HIMACS WALLS ARE FEATURED IN NEW EXHIBITION AT THE DEUTSCHES MUSEUM

OVER 10,000 exhibits at the Deutsches Museum in Munich attract around 1.5 million science and technology enthusiasts year on year. Hi-tech is a point of pride – and that is particularly obvious in the newly designed chemistry exhibition with especially impressive HIMACS solid surface material walls that gleam in radiant alpine white.

The newly designed chemistry exhibition is divided into three large sections, starting with historical laboratories from the Middle Ages, followed by an experimentation area with a hands-on laboratory and auditorium.

The third section comprises a large exhibition hall with visually engaging stations that demonstrate the importance of chemistry in every day life; from cosmetics and nutrition, to leisure, sport and construction.

The new permanent exhibition was planned by renowned architectural firm, Ambos & Weidenhammer from Munich. The basic concept of the design is to cleanly divide the massive world of chemistry into individual stations separated by cylindrical walls. The layout allows visitors to concentrate on each station without being distracted. They do not need to have any prior scientific knowledge. Rather, the chemistry is explained in simple terms. Exhibits, text and interactive elements bring historical developments, or modern products to life.

The HIMACS design seamlessly follows the thematic concept

The individual stations and their cylindrical walls made of HIMACS solid surface material draw in visitors both aesthetically and with their interesting subject matter. Fascinating shapes routed into the double-walled structures invite visitors to immerse themselves in the molecular world of each station.

The ability to see through to the other side sparks curiosity, drawing passers-by in to explore. The designs on the solid surface material walls are aligned to the respective theme of each station: for leisure and sport, for example, the walls feature an abstract microscopic image of plastic fibres, while for cosmetics, round, bubble-like shapes cover the walls, reminiscent of a foam bath.

Especially noteworthy is the nutrition station, which has the microscopic structure of an eggshell on its walls, a surface that could not be finer, more surprising, or complex. It was a real challenge for the Solid Surface material and its workmanship.

The implementation called for specialists: for this project, it was Körling

Interiors GmbH & Co. KG from Dortmund, who worked with Georg Ackermann GmbH from Wiesenbronn to bring the HIMACS solid surface material into the right form.

‘We really enjoyed the project,’ says commercial project manager at Georg Ackermann GmbH, Joachim Lutz.

‘It called for much more than a standard solution. We relied on our expertise especially where the dimensions of the exhibition walls were concerned, both in terms of the design, programming and data preparation beforehand and the installation of the final elements on site,’ adds Joachim Lutz.

As usual, HIMACS made light work of even this project. The material is as durable as stone, but as easy to work with as wood, allowing for extremely fine shapes to be routed cleanly into the exhibition walls with immaculate precision.

The Solid Surface material made of acrylic, minerals and pigments can be thermo-formed into three-dimensional shapes, creating smooth, non-porous, seamless surfaces and meeting even the highest standards of aesthetics, durability and hygiene.

That is why many renowned architects, rely on HIMACS in their projects. DIN and EN standard certificates also confirm the low flammability of HIMACS, making the solid surface material ideal for use in public spaces, such as museums, where fire safety takes high priority.

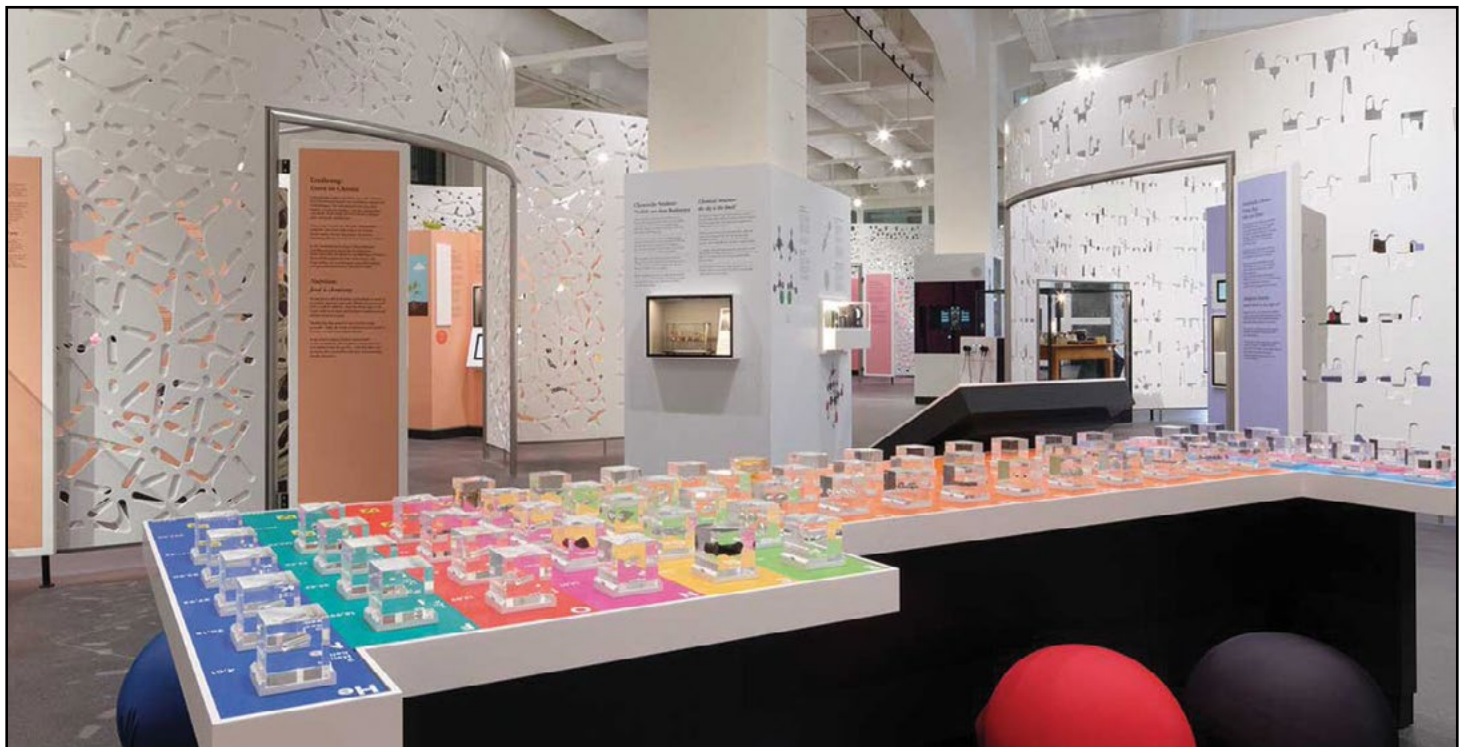
Moreover, many of the HIMACS colours meet the Oddy test criteria, which is crucial in the museum sector, especially for display cases that hold sensitive or historical exhibits.

The result is impressive.

‘The design with its semi-enclosed stations proves a hit during tours. Visitors and museum experts like the modern interpretation of chemistry. They praise the unique design, which is really shaped by the cylindrical walls,’ says exhibition curator, Susanne Rehn-Taube.

The exhibition will certainly last for quite a while. After all, HIMACS is especially durable and long-lasting, making it ideal for spaces with heavy use. What looks great now will continue to look great in future. And that remains true for more than just the Deutsches Museum in Munich.

For further information visit www.himacs.eu



To find all the latest news online go to www.industrialwoodworking.co.uk

Email us at: bill.willowe@gmail.com

SPOTLIGHT ON TRAINING: FUTURE-PROOFING THE WOODWORKING & JOINERY INDUSTRIES

AS A sector it's essential for us to consider how we can inspire students into a career in woodworking and joinery manufacturing and support the continued professional development of the talented individuals already within our profession.

This crucial work plays a vital role in driving the sector's post-COVID-19 recovery and supporting the UK's Net Zero carbon emission targets through an ongoing focus on sustainable construction.

National Apprenticeship week took place in early February and saw the industry come together to showcase how apprenticeships can often be the ideal way to kick-start a career, offering structured training whilst also obtaining hands-on work experience in a controlled environment.

Reviewing apprenticeship standards It is understood that not all individuals like to learn in the same way and sometimes the traditional routes of sixth form, or university might not be for everyone, but this does not have to mean the opportunities to learn and develop must end there.

When new people join our sector through apprenticeships, it is vital to continue to consider how programmes are delivered and what the apprenticeship standards must contain, to ensure that they align with the existing and emerging demands of the industry today.

The woodworking and joinery manufacturing sector is far more technologically advanced in terms of design and manufacturing processes than it was 10 or 20 years ago, with the result that apprenticeship standards must be consistently reviewed to ensure they remain relevant to industry needs.

Maintaining focus on continued professional development (CPD)

In order to address this challenge, the British Woodworking Federation (BWF) continues to work collaboratively with its members, education partners and other stake-holders to maintain and develop apprenticeship standards, so that they remain fit for purpose.

This approach helps address new demands on skills and training to produce apprentices that are work ready and have the skills, knowledge and behaviours needed to effectively progress on their chosen career path.

In addition to encouraging new talent, as an industry we need to maintain our focus on continued professional development (CPD) and upskilling our professionals, as ongoing training and development are

fundamental to the growth of our sector. A positive example of the development of quality assured training provision is the recently launched fire door installation awareness course, developed in partnership with the National Open College Network. This awareness course will help to upskill our members and the wider industry, whilst supporting Government aims to improve competency levels across the construction industry with regards to fire safety.

Throughout 2023, the BWF will continue to have a clear focus on career development for those within the profession, skills retention and attracting future talent, so that our sector continues to thrive and becomes a champion of continued professional development and best practice.

For more information tel the BWF on 0207 637 2646.

Visit www.bwf.org.uk.



To find all the latest news online go to www.industrialwoodworking.co.uk

Email us at: bill.willowe@gmail.com

OUTSOURCING MANUFACTURED CONTINUOUSLY INVESTS TO ACHIEVE TOP QUALITY OUTPUT

BASED in Dewbury, West Yorkshire, GB Projects Ltd has been an outsourcing partner to the commercial furniture manufacturing industry since 1973.

The personal creation of brothers, David and Geoffrey Burrows, the company now known as GB Projects was conceptualised in 1973 following their time spent converting a former Royal Navy lifeboat into a gaff-rigged sailing cutter.

They found the renovation such an enjoyable and rewarding success that the duo decided to put their skills to use full time.

D & G Joinery was formed thanks to joiner, David and engineer, Geoffrey's efforts and in 2000, after the firm had gone from strength to strength, it was incorporated as GB Projects.

The business has remained in the family and, much to their pride, continues to grow. It is now run by Geoffrey and his son, Edward.

'We are a quality-driven manufacturer that supplies high-specification projects for almost any industry,' says Geoffrey.

'Proudly made in Great Britain, we work alongside designers, architects and other manufacturers to produce a whole host of products using our wide range of manufacturing capabilities.

'We offer an extensive range of in-house manufacturing services and work with both small and large manufacturers that outsource processes including CNC machining, laminating, veneering, spray painting, assembly and edge-banding.

'Over recent years, we have invested heavily in our factory, including an



automated spray line, five-axis CNC's and a PUR edge-bander.

'With our new edge-bander, we are now able to offer high volume, quality edge banding on a wide range of applications.

'We edge in materials, including ABS, acrylic, veneers and a variety of solid timber components. Additionally, we use edging tape thicknesses from 0.4mm up to 15mm solid wood lippings.

'In terms of adhesives, we work with PUR glue which offers an incredibly strong and waterproof bond between the panel and edging whilst achieving an almost invisible glue line –perfect for our laminated panels, MDF, MFC, solid edge boardroom tables and even fire doors,' concludes Geoffrey.

For further information tel GB Projects on 01924 467147.
Visit www.gbproject.co.uk

To find all the latest news online go to www.industrialwoodworking.co.uk

Email us at: bill.willowe@gmail.com

ISSUE 48 OUT NOW!



**IF YOU WISH TO VIEW THE PREVIOUS
12 ISSUES OF KITCHEN MAKER
VISIT THE MAGAZINE'S WEBSITE:
www.kitchen-maker.co.uk**