

DO YOU
WANT
THIS
SPACE
FOR £50
A MONTH?

bill.willowe@gmail.com

INDUSTRIAL WOODWORKING & PANEL PROCESSING

JUNE 2023

DO YOU
WANT
THIS
SPACE
FOR £50
A MONTH?

bill.willowe@gmail.com

UNTHA OFFERS COMPLETE SOLUTIONS FOR WOODWORKING AND TIMBER PROCESSING

UNTHA shredding technology offers a range of tailor-made solutions for woodworking and timber processing businesses that reflect individual circumstances and requirements.

In addition to providing classic shredding solutions, the company has also positioned itself as a one-stop-shop for system solutions for woodworking and timber processing businesses.

Untha wood shredders may be combined with all the necessary peripheral devices, thereby ensuring the gentle and energy-efficient transport of the shredded material.

The Untha range includes feeders and conveyor belts, discharge screw augers and other devices that may be customised to fit the on-site requirements and the desired throughput of the shredder.

Thanks to its wide product range and complete solutions, Untha is able to offer the right shredding system for any required profile.

Shredding residual wood that contains screws and nails is no big deal for Untha wood shredders. However, metal residue in wood chips may damage downstream equipment, or cause a higher wear rate.

In order to remove metal parts from the material, a range of metal separators is available to complete the chosen conveyor solution.

By way of ensuring that the separation of metal is efficient, conveyor belts may be equipped with a magnetic separator at the pulley.

Pipe magnets are primarily used in applications where the shredded residual wood is transported via an extraction system.

Tilting containers, or bucket wheel loaders, usually cope well with small cap pieces and residual wood. However, their feed opening is not sufficient for guaranteeing the safe feed-in of long stacks of panels and pallets.

A hydraulic tilting table may be the solution: it allows for the horizontal feed-in of long, unwieldy panels by means of a fork-lift.

The material is placed on the tilting table and then tipped into the cutting chamber for shredding.

Untha shredders are available in the UK from IMA Schelling UK Ltd.



The Untha LR1000.

For further information tel IMA Schelling UK Ltd on 01937 586340.
Visit www.sales.uk@imaschelling.com

IT'S ALL OVER FOR THE W EXHIBITION

Show organisers decide to ditch what was once the UK's flagship show for the woodworking industry and an event which boasted a proud heritage.

IT'S all over for the W Exhibition, as the organisers have decided to scrap what was once the UK's flagship trade show for the furniture manufacturing and joinery industries, announcing that, instead, a new event with an unexpectedly different focus will take its place.

The Materials & Finishes Show will be held at the NEC from May 19-22 2024 and, unlike the W Exhibitions which were exclusively aimed at the woodworking trade market, the re-imagined event will feature the stone working industry, with stone kitchen worktops and natural stone flooring becoming a significant feature of the show.

The organisers have undertaken an extensive consultation period with stake-holders, including the associations and trade bodies and claim to have been in touch with the industry media (but no contact with this magazine - as one of the leading titles in the woodworking trade sector) and the visiting audience before deciding to re-define the show's

proposition, with the result that the W Exhibition's long heritage, which extends as far back as 1974 came to an abrupt end five years ago in 2018 when the very last W Exhibition took place.

Over the years the W Exhibition (and its predecessors, WOODMEX & ASFI) brought together some of the world's leading suppliers of woodworking machinery, materials and tooling.

All at Industrial Woodworking & Panel Processing are saddened to learn that the W Exhibition is now a thing of the past having fallen victim to a surprising new slant in an aim to widen its audience.



To find all the latest news online go to www.industrialwoodworking.co.uk

Email us at: bill.willowe@gmail.com

HANDS-ON WITH NEW DESIGNS AT PANELCO'S LATEST INNOVATION EVENT

KITCHEN designers and furniture manufacturers recently gathered in numbers keen to see the new trends from two major brand partners at the second Innovation Event hosted by Panelco at the company's head office in Stoke-on-Trent.

On show in the large, welcoming open design studio, Saviola created multiple wall displays full of new designs and textures, inviting the customers to share their thoughts and opinions.

Feature display walls with stand-out designs were on show in large pieces with various authentic and elaborate wood designs.

New textures featured heavily in the displays and the unique finishes were received positively by everyone. Panelco has already committed to an ex-stock 18mm range of 29 colourways, including three carcass plain colours, to allow customers to achieve a 100 per cent recycled kitchen unit as an option.

Sustainability and an eco-ethical focus are at the core of Saviola's design ethos, displayed in a visual representation showing the whole process in specific stages, from old furniture, material cleaning and separating waste to recycling, which results in producing a pure material.

The idea behind displaying the new designs in this way was to include the customer in the review process and highlight décors they would benefit from and love; Panelco would then consider which new designs to add to

their range using the feed-back. Kronospan featured the company's new decorative collection in the design studio, along the main display wall showing off an impactful array of colours.

A total of 42 unique designs were the highlight and Panelco has committed to the complete new range.

Here it was easy to see the contemporary décors up close in the well-lit environment and the area remained a hive of activity throughout the event.

Kronospan made the full use of the second design area where customers could move large samples around and get to grips with the latest designs and textures, along with supporting assets to take away.

Presentations gave customers an insight into the collection's origins and where the inspiration was derived. The recent range focused on four origin stories, each with a different look and feel, all very different in their own right; a highlight was the new embossed texture that enhanced the new oak and chestnut designs on display, a real wow factor.

The new updated collection was met with positive feed-back and it was clear that the latest designs and textures were well received.

The entire collection is now in stock at Panelco and available for next-day delivery. The trends displayed from Saviola will now be used as part of a range review process and the new designs will be reviewed shortly.



For further information
visit www.panelco.com



To find all the latest news online go to www.industrialwoodworking.co.uk

Email us at: bill.willowe@gmail.com

Premium class
sliding table saws.

T66

T66 with ConnectControl

With the new MARTIN T66, we have developed a real all-rounder that combines the advantages of the large machines. The machine with a saw blade that can be tilted to one side is the ideal entry into the MARTIN world of sawing and convinces with practical advantages for your everyday work. For example, the T66 offers powerful, continuously adjustable rotational speed control already as standard.

ConnectControl stands for the patented control concept that characterises the latest generation of sliding table saws from MARTIN. With ConnectControl, you get a uniquely designed, highly efficient control concept that not only opens up completely new horizons for machine operation, but also unlocks the entire world of modern data exchange.



MARTIN

www.martin.info



GERMAN
INNOVATION
AWARD '22
WINNER



ConnectControl
Technology

England and Wales

MWM Markfield Woodworking Machinery Ltd. – www.mwmachinery.co.uk

Scotland

AWMS Engineering Ltd. – www.awmsltd.co.uk
WS Woodmachinery – www.wswoodmachinery.co.uk

Northern Ireland

Electro Tech Machinery Ltd. – www.electrotechmachinery.com

Republic of Ireland

HIGH-TECH MACHINERY Ltd. – www.high-tech.ie

LIBERON LAUNCHES RANGE OF DECKING STAINS FOR PROFESSIONALS

PROFESSIONALS know they can rely on Liberon to achieve the results their customers want. When it comes to caring for exterior decking, its decking oil is one of the woodcare expert's flagship products.

Now, the brand trusted by professionals has launched a range of decking stains that makes the selection of Liberon decking woodcare options comprehensive. Liberon's new "Superior Decking Stain" affords professional users several benefits.

Sunnier, longer days mean that now is the ideal time to undertake decking maintenance to make sure that it is not only looking its best, but is well protected from the elements.

A high-quality decking stain can help not only transform the appearance of decking, but can boost its longevity too.



Liberon Superior Decking Stain is a solution that is water-repellent, protects against damage from sunlight, looks fabulous and has a "bio-sourced" formula.

The bio-sourced formula, being based on vegetable oils and modified bio-based resins reduces environmental impact, but still maintains superior performance.

Liberon Superior Decking Stain's protection against moisture and sunlight is long-lasting; the stain's water-based formulation includes anti-slip properties; it is easy to apply thanks partly to an excellent spreading rate compared to other available options; is quick-drying and it produces a natural, semi-transparent finish once dry.

The new decking stain is offered in Light Silver, Gunmetal, Light Oak, Teak, Black and Clear colour options. It is available in 2.5L tins, which is sufficient to cover 15m² with 2 coats, or a 5L option, sufficient to cover 30m² with 2 coats.

The new product not only marks a turning point in Liberon's decking woodcare offering, but ushers in a whole new livery for packaging, including a new logo. The impactful new look is the result of investment in the brand in order to modernise it and help move the market forward. This investment will see other products in the range also follow suit.

For further information

visit <https://www.liberon.co.uk/superior-decking-stain/>



To find all the latest news online go to www.industrialwoodworking.co.uk

Email us at: bill.willowe@gmail.com

LEITZ TOOL MANAGEMENT HELPS TO REDUCE PRODUCTIVITY DROP-OFF

LEITZ is working with manufacturers to significantly improve their productivity through its Tool Information Management (TIM) system.

The TIM system is designed to maintain optimum machine and tooling performance by monitoring the tool life-cycle, ensuring that a regular sharpening, cleaning and servicing schedule is carried out at the correct timings to avoid any drops in productivity.

The tooling system is directly monitored at Leitz to track changes and fluctuations in production to predict and assess when your

tooling requires maintenance, or replacement. For larger operations, Leitz can also use RFID tags to track the location and usage of tools.

'We are well aware of the issues that machine downtime can have for our customer's businesses,' says managing director at Leitz Tooling, Simon Liddell.

'If tooling systems aren't managed effectively, it can have a huge knock-on effect, significantly reducing productivity and product quality, not to mention damage to the expensive machines and their parts,' he adds.

Leitz TIM customers are well positioned to avoid downtime and to help to keep tooling cost-effective. When paired with the new Leitz E-shop for consumables, it gives manufacturers more support with end-to-end management of their tooling inventory.

Interested companies can set up a meeting with the Leitz team, where manufacturing processes will be assessed and a package identified that is most suitable for the individual needs and budget.

After on-boarding, clients will gain access to Leitz systems that monitor their tooling.

For further information tel Leitz on 01279 454530.

Visit <https://www.leitz.org/en-gb/services>



Dear Customer,

Did you know we have extended our product range to include:

Slitting Blades, Nordson compatible replacement hoses and Rings for BM 200 and BM 20 and generally anything to do with Profile Wrapping!

WE ALSO SUPPLY MOULDER WHEELS & HEAT GUNS AND SPARE PARTS FOR ALL HEAT GUNS



07484 341294
arook.ba@gmail.com
www.britishadhesives.co.uk



To find all the latest news online go to www.industrialwoodworking.co.uk

Email us at: bill.willowe@gmail.com

A WIDE RANGE OF STOCK MACHINES IS AVAILABLE FROM MASTERWOOD GB

As suppliers of parts and materials, across all industries, endure the ongoing global struggle, Masterwood GB was facing delivery times of up to six months for new machines.

As the demand for these is still going strong, Masterwood GB has pre-ordered a range of machines to go into production at the Rimini factory in Italy.

The machines are built to mid-range specifications, with the ability to retro-fit additional options, such as waste conveyors and a fourth axis, so every machine can meet the customer's requirements without the need to compromise. Alternatively, items initially added to the machine can be removed if not required, to avoid unnecessary costs for the customer.

When a Masterwood customer in Northern Ireland found that a 18-year-old CNC machine was no longer viable for repair, the decision was made to purchase a new Masterwood Project 470L.

As the machine was near completion when the order was placed in early October 2022, delivery from Italy and installation was completed in just four weeks.

The current range of stock machines available from Masterwood GB includes:

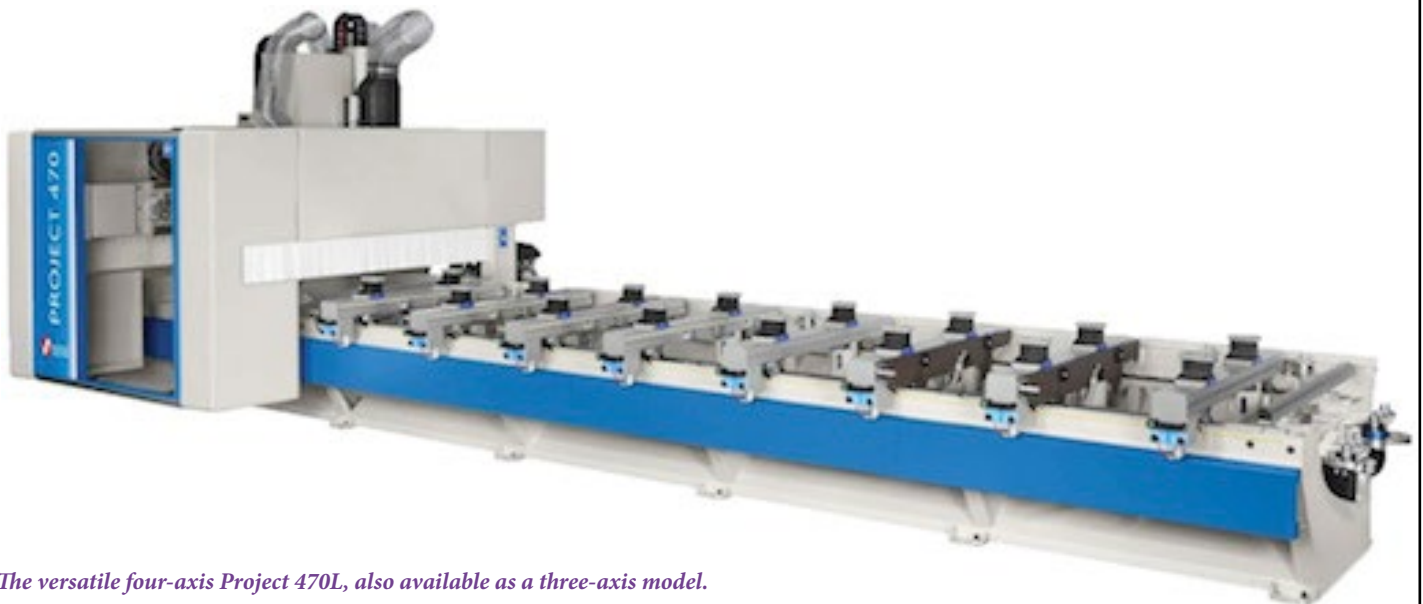
- The versatile four-axis Project 470L, also available as a three-axis model.
- The Winner 250 — Masterwood's entry level short bed CNC; suitable for doors, windows, cabinets and other bespoke work.
- The Winner 485 — Fixed specification full five-axis long bed CNC.

- The TF 600 KT - the latest addition to the Masterwood CNC drilling range. High speed drilling on all six faces of a panel, plus routing above and below with a six-position tool changer.

Masterwood continues to develop its full range of CNC machinery, as well as the recently added beam saws and panel saws, which have already



The TF 600 KT is latest addition to the Masterwood CNC drilling range. It offers high speed drilling on all six faces of a panel, plus routing above and below with a six-position tool changer.



The versatile four-axis Project 470L, also available as a three-axis model.

To find all the latest news online go to www.industrialwoodworking.co.uk

Email us at: bill.willowe@gmail.com

been selling well across Europe and have received high praise from customers for their quality and build strength.

Special machines for doors, windows and frames are still an integral part of the Masterwood range and with the option of automation and full production lines, Masterwood can provide solutions to business, large and small.

With the support of KDT Machinery and Masterwood's own software house, the Italian manufacturer is moving forward with upgrading existing software design packages, as well as creating new packages.

The software available covers standard windows, traditional box windows, door sets, staircases, cabinets, nesting and 3D,

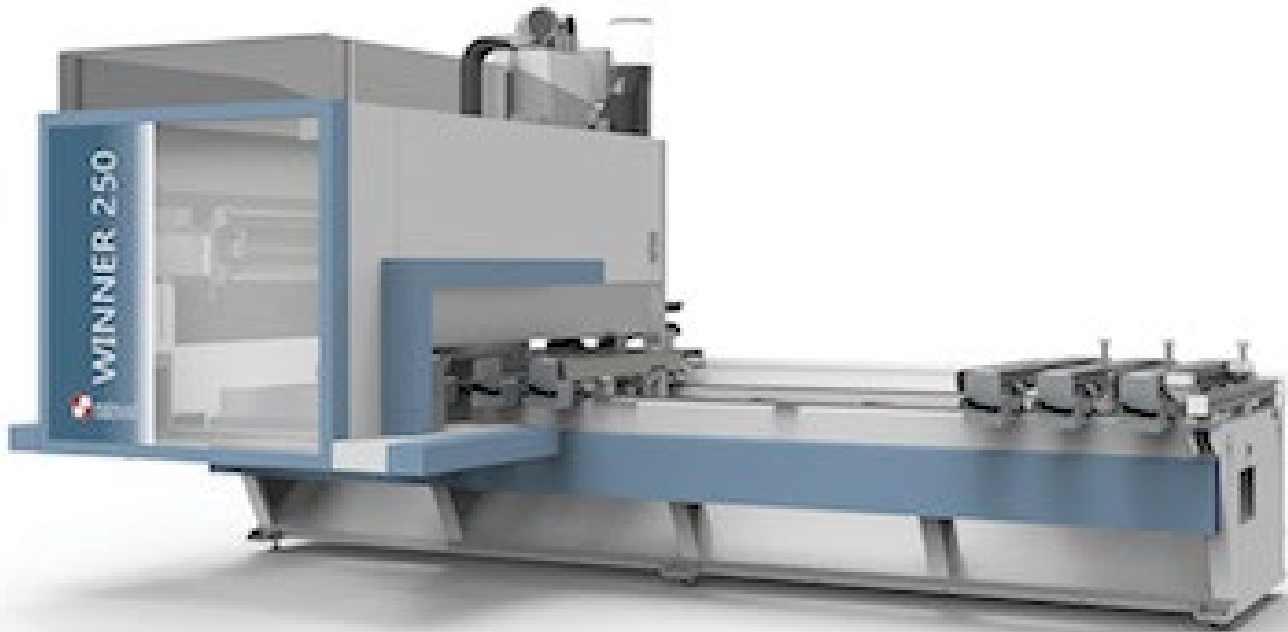
for three-, four- and five-axis machines. A new version of the long-established MasterWorks CAD/CAM system is under development and will be available on new machines and as an upgrade for existing customers.

Masterwood GB can offer bespoke demonstrations on a range of products and software at the company's showroom near Gatwick Airport.

On show is a five-axis pod & rail, four-axis matrix bed, compact drilling machine, high speed drilling machine and a beam saw.

For further information tel Masterwood on 01293 402700. Visit www.masterwood.com

The Winner 250 is Masterwood's entry level short bed CNC. It is suitable for doors, windows, cabinets and other bespoke work.



The Masterwood Winner 485 is a fixed specification full five-axis long bed CNC machine



To find all the latest news online go to www.industrialwoodworking.co.uk

Email us at: bill.willowe@gmail.com

SIKKENS WOOD COATINGS CELEBRATES A NEW LOOK TOGETHER WITH AN EXPANDED PRODUCT PORTFOLIO

SIKKENS Wood Coatings, part of AkzoNobel, is celebrating 2023 in style with a refreshed image and an expanded portfolio of interior wood coatings products.

The brand, which was founded in 1792, is being given a more modern, dynamic look, in tune with today's wood coatings market, while its portfolio of wood coatings solutions is expanding to include interior products, in addition to its well-established exterior assortment.

As a result, Sikkens Wood Coatings will be able to offer a one-stop-shop solution to distributor partners and end-customers alike, with a fit-for-purpose portfolio to satisfy most industrial wood coatings requirements. These changes will be rolled out across Europe, Africa and the Middle East throughout 2023.

'This exciting new strategy represents a significant step forward for Sikkens Wood Coatings,' says marketing director, industrial coatings AkzoNobel, Chris Bradford.

'By bringing interior coatings into the Sikkens Wood Coatings portfolio, we are building on the existing strengths of the trusted brand whilst, at the same time, giving it a fresher, dynamic appeal and positioning it for continued growth in the years ahead,' he adds.

'This investment marks a significant and momentous occasion in our brand's history. We look forward to launching the products and refreshed brand to our customers and continue to provide strong support moving forward,' says regional commercial director, Wood Coatings, EMEA, AkzoNobel, Alan Hall.

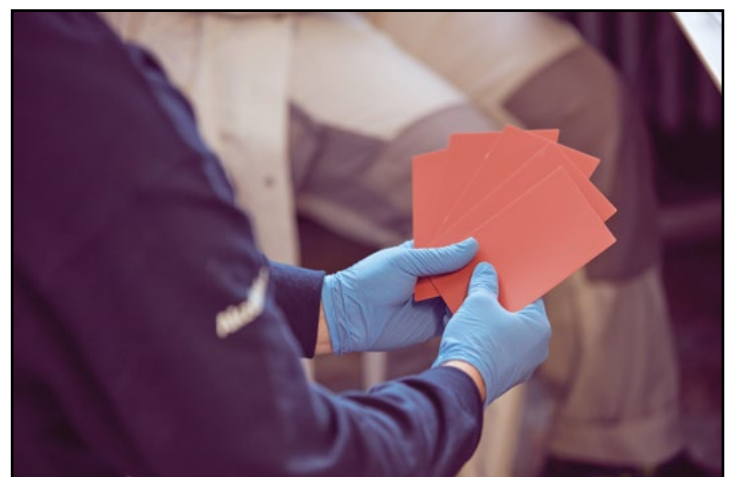
The interior assortment includes products from the AkzoNobel Wood Coatings range of interior products, re-branded as Sikkens Wood Coatings for customers sourcing their products from distributors, so customers may already be familiar with some of the product names in the range, making the transition easy.

'Our customers can now find the wood coatings solutions they need - both exterior and interior - all in one place under the trusted Sikkens Wood Coatings brand.

'To complete the package, we've also launched an exciting, refreshed website, distributor portal, brand videos, a comprehensive catalogue featuring the full interior category and many other tools, all carrying our sharp, revived brand look and feel.

'These items have been carefully created to help our customers in their day-to-day business and add value,' concludes Mr Hall.

For further information visit www.sikkens-wood-coatings.com



To find all the latest news online go to www.industrialwoodworking.co.uk

Email us at: bill.willowe@gmail.com



To find all the latest news online go to www.industrialwoodworking.co.uk

Email us at: bill.willowe@gmail.com

Wood Waste Control

Your *complete* extraction solution



- dust extraction systems •shredders
- chippers •briquette presses
- warm air heaters

01628 525290

info@woodwastecontrol.co.uk

W W C

WOOD WASTE CONTROL (ENG) LIMITED

www.woodwastecontrol.co.uk

SASH & DOOR HARDWARE + QWOOD INNOVATION REALLY DOES MAKE SENSE

SDH has been supplying Qwood composite beads since the company was founded, the reason being that it's a product that the company believes makes the beading process much easier than running their own timber beads.

So why should a joiner use Qwood?

It's simple. It really is and, whatismore, you'll save time and money! Although at face value, the cost of a length of Qwood is more than that of timber bead. However, if you take into account the labour-intensiveness of running your own beading, not to mention the waste created, Qwood really does make sense.

Not only will changing to Qwood save you time and money, but there are some great added benefits to using what is claimed to be the only sustainable provider of FSC Chain of Custody timber composite beading profiles in the world. With 40 window and door profiles, this range is claimed to be the most extensive on the market.

Qwood has also proven to reduce site visits for remedial issues - for example, shrinking beads, refilling pin holes and glazing beads popping off.

Below are some of those key factors that will benefit you as a manufacturer and the product you supply to your customers:

- Doesn't rot.
- FSC/PEFC Certified.
- Consistently straight.
- No sanding, or pre-painting preparation.
- No pinning on clip-in bead profiles.
- Minimal expansion, or contraction.
- More profiles than any other system on the market.

GLAZING BEADS & BARS

Qwood glazing beads and bars offer a great alternative to timber beads

for a number of reasons. SDH customers say that they'd never go back to running their own beading after trying Qwood.

The main reason for this is that they don't experience the same issues as with timber beads; this is because Qwood doesn't rot, or warp, due to weathering. When using Qwood, costly remedial site visits to replace glazing beads that have started to lift from the glass become a thing of the past.

Whether you go for our pinless, clip-in profiles, or pinned beads, Qwood is sure that you will be impressed with how good a product Qwood is.

Wood has also recently released a clip-in profile now allowing the user to internally glaze your windows as well as externally. This new profile also has an Ovolo Georgian bar profile to match.

SLIDING SASH PROFILES

Using SDH's Qwood clip-in sliding sash profiles gives you a more efficient assembly process, or you can use the company's standard staff and parting beads. Either way, you'll still be able to reap the benefits of Qwood, such as no rotting, one top coat and no end-grain sealing, among any others when compared to timber beads.

DOOR PROFILES

Qwood offers a range of rigid wood composite profiles for use on both exterior and interior door panels. Profiles are available to fit many different sizes, shapes and door designs.

Qwood's high quality means that it will far outlast its timber alternative. If you're a joiner that manufactures windows and doors and who has not heard of SDH before, or you are looking for a new supplier, get in touch by calling the sales team.

For further information tel the company on 01752 651330.

Visit www.sdhardware.co.uk



To find all the latest news online go to www.industrialwoodworking.co.uk

Email us at: bill.willowe@gmail.com

EXPERIENCE THE FUTURE OF CUTTING AND ROUTING SYSTEMS AT JUNE AXYZ AND WARDJET EXPO EVENT

THE AXYZ router and WARDJET Waterjet Expo Event in Telford is the place to be on Wednesday June 14 2023.

The leading company in cutting and routing systems is excited to showcase its portfolio of machines at this one-day event.

The day will be packed with live demonstrations and training on CNC router and waterjet applications. Visitors will have the opportunity to tour the demonstration areas and witness these incredible machines in action.

Each system will run various materials and applications to provide the visitors with the broadest experience to showcase the versatility of the product range.

The event will be staffed with experienced applications and product experts who will train attendees in best practices and answer all their CNC questions.

Visitors will get a chance to see router systems, such as AXYZ INFINITE, TRIDENT, METALWORKER and INNOVATOR, along with the X-Series WATERJET with the APEX 60 FIVE-AXIS HEAD and the A-SERIES small format waterjet. With such a wide range of machines, there will be something to suit everyone's needs.

Visitors will also be introduced to AAG's industry-leading control

interface, MOVE™, which drives all machine tasks and is designed to optimise the operation of the CNC machine.

MOVE™ makes machine operation easy and intuitive, allowing users to perform tool changes, set up work offsets, call up new files, or optimise the cutting speed.

In addition, the event will feature AAG's industry partner, Cadline, which produces Autodesk Fusion 360, a fully integrated CAD/CAM software that helps users to produce high-quality CNC machined parts, allowing operators to achieve the most from their CNC machines.

Providing advanced manufacturing functionality for three- to five- axis tool-path strategies, tool-path optimisation and process automation, Cadline is sure to be a hit with visitors.

There will be many different materials on-site and a team of experts will be on hand to answer all of your questions.

Register Now: <https://www.eventcreate.com/e/aag-router-and-waterjet-expo-june23>

For further information tel the company on 01952 291600. Visit <https://www.eventcreate.com/e/aag-router-and-waterjet-expo-june23>



FELDER'S TECHNOLOGY PARTNERSHIP COLLABORATION

THE Felder Group and EMC srl have been working together successfully for over two decades. The two companies have now reached an agreement on a deeper technology partnership, which sees the Felder Group acquiring a majority share in EMC srl, thus integrating EMC into the corporate group.

The special focus here lies in the area of sanding technology. The Felder Group and EMC offer cutting-edge, end-to-end sanding solutions for all areas of the secondary woodworking industry.

From entry-level machines to individual innovation solutions and high-end products, the partnership with Felder can cover the customer's entire process chain within the sanding technology sector.

The scope of the Felder Group's product portfolio has significantly expanded in recent years, with individual customer requirements and special projects also increasingly coming to the fore.

Simultaneously, high demand from different markets and growth areas requires a joint bundling of research and development, as well as production forces.

'As a full-range provider in the field of secondary woodworking, the further development and integration of EMC into the Felder Group was the logical and most forward-looking step. With EMC, we've gained an innovative

technology partner that possesses the technological and soft-skills required to cover the process chain in the sanding segment,' says Felder Group chief marketing officer, Tamara Felder.

International distribution and service for woodworking in the field of sanding technology will be taken over largely by the Felder Group. The existing sales structures of Felder and EMC will remain in place.

'The team at EMC is very excited about the Felder Group merger and the focus that's being placed on sanding technology. This is a unique opportunity to demonstrate our expertise and innovative strength, as well as being able to serve many customers and markets to the fullest extent,' says chief executive officer of EMC, Ivano Coveri.



For further information tel Felder on 01908 635 000. Visit www.felder-group.com

To find all the latest news online go to www.industrialwoodworking.co.uk

Email us at: bill.willowe@gmail.com

W EXHIBITION RELAUNCHES AS MATERIALS & FINISHES SHOW

THE UK's flagship trade show for the furniture manufacturing and joinery industries, formerly W Exhibition, has relaunched as the Materials & Finishes Show.

THE event which will run at the NEC from 19-22 May 2024, is the re-imagined concept developed by the Montgomery Group. The event will continue to provide a platform for manufacturers, processors and installers of timber, components and supporting services.

'It gives me great pleasure to announce the launch of Materials & Finishes Show, which aims to build on the success of the W Exhibition,' says event director, David Todd

'Since the show's conception in 1974, it's passed from being a woodworking machinery exhibition to covering the full range of technology and materials for industrial woodworking. We aim to take this further, providing a more valuable, time and resource effective solution for both our exhibitors and visitors from a more diverse community,' he adds.

'We have conducted an extensive market research exercise and worked closely with our stake-holders, which has concluded that there's still a huge appetite, and indeed need, for an industry platform, specifically across the UK and Ireland.

'A great deal has changed since the last edition of W Exhibition in 2018 and we've adapted the show's proposition to reflect the evolving needs of the market both now and in line with our anticipations for the future.

'While wood and timber will remain a core focus for Materials & Finishes Show, it was a natural progression for us to incorporate stone and broaden the delivery for our community.

'This paves the way for other products, such as stone kitchen



countertops and natural stone flooring to be featured,' concludes Mr Todd.

All areas of the material journey, from initial stages of raw processing through to finishing and component supply for completed products, will be represented at Materials & Finishes Show.

Visitors will have the opportunity to see running machinery together with components, materials, technology and services for the manufacturing and processing phases of materials, alongside the latest products and developments for finishes.

Materials & Finishes Show will attract buyers from every corner of the industry, from furniture and joinery manufacturers and designers right through retailers, the KBB market, carpenters, joiners, worktop fabricators and stone masons.

'As an organisation, the Montgomery Group is fully committed to protecting and building on the W Exhibition's legacy and the communities we serve. It's our responsibility to preserve the long-term success of our platform for the sector, which is why we've been through this extensive period of consultation to re-imagine and develop the show to meet the changing needs of the market, culminating in the re-launch,' says Mr Todd.

Materials & Finishes Show will bring together some of the world's leading suppliers of woodworking and stone machinery, materials and tooling.

The event will return to the NEC in its new and reinvigorated format from May 19-22 2024.

XYLEXPO DUE TO RETURN NEXT SPRING FOR ITS 28TH EDITION

THE 28th edition of Xylexpo, the biennial international exhibition of woodworking and furniture technology, is moving back to the spring (May 21-24).

Since its formation Xylexpo has always been held in May. The pandemic emergency forced the organisers to choose a different time slot in

October, building a different scenario and new partnerships to help exhibitors and visitors return to "normal business" in a successful event.

As a result Xylexpo 2022 was certainly the industry's most successful event after the "Covid storm".

'In harmony with all the most important industry players, we have accurately considered all the alternatives and the role of our exhibition as a primary promotion vehicle,' says president of the exhibition and Acimall, (the association of Italian woodworking machinery manufacturers, which owns and organises the event), Luigi De Vito.

'This process has led us to identify the time slot from May 21-24 for the staging of Xylexpo 2024,' says Mr De Vito.

'We are defining all the details of the new project, even more focused on multi-media and we are working to bring all industry players to Milan, offering a one-of-a-kind dynamic event, with plenty of initiatives, that can achieve the best results in terms of culture, promotion and business,' he adds.

The exhibition will be held at Fieramilano-Rho in the "East side" halls, near the underground station and all the highway, railway and airport connections, to simplify the mobility of Italian and international operators, who are expected to attend in high numbers.



For further information visit www.xylexpo.com

To find all the latest news online go to www.industrialwoodworking.co.uk

Email us at: bill.willowe@gmail.com

SHOWTIME FOR COMBILIFT AT THE PREMIER GERMAN EXHIBITION

SINCE the last LIGNA event in 2019, Irish handling specialist, Combilift has been busy introducing new models, finessing technology and expanding its global markets even further.

This year's edition also coincides with the company's 25th anniversary and visitors to the show were able to experience an action-packed stand in the heart of the open-air site.

The company's innovations and new product launches were the main focus of attention, but Combilift also likes to entertain as well as inform, so it was no surprise to find "dancing" trucks and Irish music, along with typical Irish hospitality.

With around 16 exhibits, Combilift effectively demonstrated that it has a solution for pretty much every handling and storage scenario, which companies in the timber, joinery and furniture sectors may face. These range from small pedestrian 1,000kg capacity stackers to straddle carriers and mobile gantries, which can lift loads of 100,000kg and more.

Two of the largest Combilift models are the Combi-SC Straddle Carrier and Combi-CSS Slip Sheet – both of which guarantee safer and more productive operation when working with containers.

The Combi-CSS, which premiered at LIGNA 2019, was designed for the fast loading of freight containers. It allows a full container load cycle to be completed in under six



Combilift's "dancing" truck routine is always a crowd-pleaser.



Combilift had probably one of the busiest stands within the open-air site at the show.

To find all the latest news online go to www.industrialwoodworking.co.uk

Email us at: bill.willowe@gmail.com

minutes, as well as minimising the risk of product damage. To the side of the Straddle carrier were a few examples of the compact counterbalance design Combi-CBE models and Combi-MR4, described at its launch last year as “taking multi-directional capability to the next level,” thanks to its new Dynamic 360 deg steering.

These were used for the very popular “dancing” fork-lifts routine, which is always guaranteed to draw a crowd, as well as demonstrating the trucks’ unrivalled manoeuvrability and drivers’ skill.

The majority of the exhibits on the stand were electric offering emission-free, quiet machining allowing purchasers to reduce their carbon foot-print whilst benefitting from the powerful performance now

offered by Combilift’s new generation of electric handling equipment.

Also on show was the Aisle Master articulated truck, which is held in high regard because of its narrow aisle capability within racking, and the Combi-WR4, a multi-directional pedestrian reach stacker that can handle pallets as well as long packs of timber.

‘2023 is a very special year for us and LIGNA has always been an important event, so it was a perfect framework for celebrating 25 years in business and the launch of numerous new models,’ says Combilift’s managing director, Martin McVicar.

For further information Visit www.combilift.com.



The C5000XLE Electric – is a tough machine for tough jobs, which visitors to the trade fair were able to see first-hand.

To find all the latest news online go to www.industrialwoodworking.co.uk

Email us at: bill.willowe@gmail.com

STRIEBIG RETURNS TO LIGNA 2023

A GREAT deal can happen in four years and Striebig's product development is no exception. At LIGNA 2019, the Swiss vertical panel saw specialist launched its newly updated Control vertical panel saw and brand-new BaseCut and ExpertCut optimisation software.

Fast forward to 2023 and Striebig's Edition 60 took centre stage at the international trade fair alongside the very latest digital innovations.

Edition 60

Designed specifically for single-operator use, the new Edition 60, which is exclusively available in the UK through TM Machinery, centres around an integrated panel-lowering device (PAV) comprising two panel-lowering units that position each panel automatically.

This process eliminates the need to turn the sheet by hand, allowing for a precise and effortless cutting process that requires minimal handling by a single operator.

Packed with intelligent features designed to guarantee accuracy, speed and safe, hand-guided workflow, it proved to be a must-see machine at this year's show.

Striebig 4D, Control & Compact

Visitors were also be able to explore the fully automatic Striebig 4D, Control and entry-level Compact. In addition, there multiple software options were demonstrated throughout the five-day event including OptiDivide – Striebig's first retro-fittable software and hardware package – together with the latest additions to Striebig's BaseCut and ExpertCut optimisation software.

'The few three years have been challenging for everyone, but we were thrilled to be back in Hannover this year and proud to be showcasing our market-leading range of vertical panel saws at the exhibition,' says Striebig's chief executive officer, Daniel Bucher.

'We work with foresight and continuously improve the benefits of our technology. That's why we wanted to offer visitors to the stand compelling live experiences on a range of applications using various composite panel materials, aluminium and plastic. Seeing was believing when it comes to our saw's unrivalled build quality and Swiss-precision,' concludes Mr Bucher.



For further information tel TM Machinery on 0116 271 7155
Visit www.tmmachinery.co.uk.



LEITZ PRESENTS ALL THE LATEST INNOVATIONS AT THE HANOVER SHOW

LEITZ presented its latest developments at LIGNA. This year the tooling specialist concentrated on showing service concepts, industry focal points and trends from the furniture industry, structural timber engineering and advanced materials at its exhibition stand under the motto "Solutions in new dimensions". The focus here was on the claim to further increase customer success.

"Finding the optimally adapted solution for every requirement" is the daily incentive at Leitz which sees itself as a solution provider whose products primarily support the increase in flexibility, efficiency and productivity of its customers in the relevant processes.

With a total package of innovative tool technology, consulting, the constant exchange of information with all current machine and material manufacturers, as well as its fully comprehensive range of services, Leitz is a reliable partner for the wood and plastics processing industries all over the world.

Focus on the furniture industry - forward-looking machining concepts for more flexibility and efficiency

Manufacturing processes in the furniture industry are considered to be particularly complex. In some cases, the industry has to meet the highest demands from consumers.

Materials, surfaces and functionality, as well as different production philosophies, mean that the flow of daily challenges in manufacturing companies never stops.

Leitz's uniquely broad solution expertise ranges from panel sizing and trimming to edge finishing or drilling.

Depending on the technical design of the process, whether using CNC machines, or throughfeed machines, Leitz offers a tooling solution for every conceivable challenge.

At LIGNA Leitz presented a special highlight with its new, innovative jointing concepts. They stand for maximum tool life, high process reliability and perfect machining quality - with the help of the width-adjustable Diameter EdgeExpert jointing cutter, which proves its durability every day.

These were features that visitors to the LIGNA trade fair were able to see for themselves in discussions with Leitz specialists.

Focus on advanced materials - material mix as an opportunity

At Leitz, the so-called Advanced Materials include facade construction materials, insulating materials, aluminium, composite materials and plastics, so it is not just a question of

supplying woodworking manufacturers for this tooling specialist.

In close co-operation with users and manufacturers, the Leitz specialists examine the preferred materials in order to optimally co-ordinate processes and tools and then use this information to make processing recommendations.



HOW THE PERFECT UTILISATION OF DIGITAL INFORMATION WORKS



THE planning and implementation of complex large systems demands a high degree of digitalisation. Data exchange between the system parts, with control systems and connected storage locations, is just as important as the machine engineering itself.

Austrian machine manufacturer, Fill demonstrated this at LIGNA. Visitors to Fill's exhibition stand were able to see for themselves the innovative complete systems live in action in graphical animations on the DIGITAL CUBE, a 2m x 2m LED cube. These animations demonstrated how hi-tech mechanical engineering and digital tools can be combined to maximum effect.

'Our development departments work continuously on new scenarios for future-oriented solutions. Innovations for optimising modern woodworking are developed with the competence acquired from years of experience and collaboration with customers and partners,' says head of wood competence centre at Fill, Erwin Altendorfer.

The positive feed-back from the many international visitors to our exhibition stand confirms that with our hi-tech systems we generate clear added value for our customers in the wood processing industry,' he adds.

Fill machines and systems are considered to be "state-of-the-art" on the international market for wood processing and machining.

Hi-tech systems tailored to individual customer requirements

The combination of advanced series production machines, which work with digital information and the flexible adaptation to individual customer requirements are the hallmarks of the Fill systems.

The production of parquet, solid wood boards and their components, as well as surface repairs of plywood, three-layer boards and CLT, take place extremely economically and precisely. The new technologies improve quality and increase resource efficiency.

Digitalisation is the key

Fill CYBERNETICS products are a key component of all the machines and systems from Fill. Fill CYBERNETICS covers the entire bandwidth of required solutions – from the monitoring of complex individual operations and seamless workpiece traceability, through to automated system optimisation by means of artificial intelligence.

Not only standard solutions, but also customer-specific and platform-independent dashboards, provide a perfect overview and enable detailed analyses of production and machines. Productivity is boosted sustainably and resiliently.

With more than 200 modules of the SPEEDLINER 920-350 HYBRID already delivered, its fine-cutting bandsaw technology is the recognised performance benchmark and this was also to be seen on Fill's exhibition stand. Using this bandsaw as an example, Fill demonstrated how digitalisation products, such as CYBERNETICS ANALYZE, CYBERNETICS PRODUCE and CYBERNETICS VISION can be used to optimise processes.

For further information:
Visit <http://www.fill.co.at>

Particularly in the machining of composite materials and plastics, the know-how of the Leitz specialists provides a solid basis for customer success.

Here, there is increasingly a combination of recycled materials with unknown ingredients, which causes certain challenges. Precise research & development tests in the company's own technology centre can be of help here.

With this approach, Leitz creates complete solutions of products and services, so that its customers work more efficiently and obtain high-quality machining final results.

As an example of this type of development process, Leitz was showing a router bit that has been specially developed for the thin-side machining of HPL.

Focus on "Circular construction" - The future in structural timber engineering?

Not demolishing an existing building after its scheduled use, but rebuilding it for a new purpose without wasting building material and with the help of existing construction elements, sounds like some kind of future at first glance.

The basic idea behind so-called circular construction is a recycling economy and the conservation of resources, in which non-load-bearing building elements are given a second life.

These are not disposed of, but reconstructed within the existing building for its new use without having to change the basic architecture - a revolution in structural timber engineering.

The current subject of research is special cone adapters made of synthetic resin pressed wood, which are used to detach these re-usable construction elements and significantly simplify retrofitting and conversion.

Leitz has developed a special milling cutter for the millimetre-precise cone milling, which reduces the machining process by a factor of 10 compared to conventional routers. At LIGNA Leitz was showing in detail how the company is actively shaping the future in structural timber engineering with its tool solutions.

Focus on service - efficient and resource-saving reprocessing of tools

As a further focal point in Hanover, Leitz was presenting its future-oriented service concepts. Topics, such as regrinding, reconditioning, or maintenance, but also logistics and tool management, are meant to burden customers and users as little as possible in their daily work.

For this purpose, Leitz service specialists have developed new - also digital - solutions. With its worldwide unique regrinding service by qualified specialists, as well as sustainable service concepts, Leitz is able to offer an unrivalled level of customer proximity and inspire the users of its tools and services.

This is because resharpener and reconditioning in manufacturer quality with uniform high quality standards worldwide is not only extremely economical, but also conserves resources and is therefore sustainable.

Leitz Tool Recycling also helps here. A programme in which Leitz customers collect their

LIGNA REPORT... LIGNA REPORT... LIGNA REPORT...

used carbide elements and give them to their service driver free of charge if they weigh more than three kilograms. In return, they receive an agreed countervalue in the form of a credit note for the Leitz regrinding service.

Focus on LeitzXPert - knowledge for your pocket

Whether it is the machine operator, the work preparation department of the foreman - in the individual processes in woodworking and plastics processing, questions about the tools used can arise again and again.

In addition to the Leitz specialists, the LeitzXPert online application will also provide answers in future. It contains tool expertise and information on almost all of the company's standard products.

Accessible free of charge, the data is provided either via the LeitzXPert app, or online via a browser-based Leitz knowledge platform.

LeitzXPert was already presented as a study at LIGNA in 2019. In the meantime, the application has now fully matured and will be offered as a fully-fledged information platform in the future.

Tool identification is very simple by entering the product ID number, or via a QR, or barcode. In addition to the product data from the Leitz Lexicon, the user is immediately offered additional product-related information, including videos.

However, that is not all. LeitzXPert also offers calculation programs for important application data in woodworking and plastics processing. LIGNA visitors were able to experience this new "knowledge for your pocket" in a hands-on way.

Focus on CNC adaptors - competence in the field of tool adaptors

Whether maximum flexibility through a quick tool change with the aid of a collet chuck, or maximum precision through the use of a shrink fit chuck - at LIGNA Leitz was also demonstrating its great expertise in the field of adaptors.

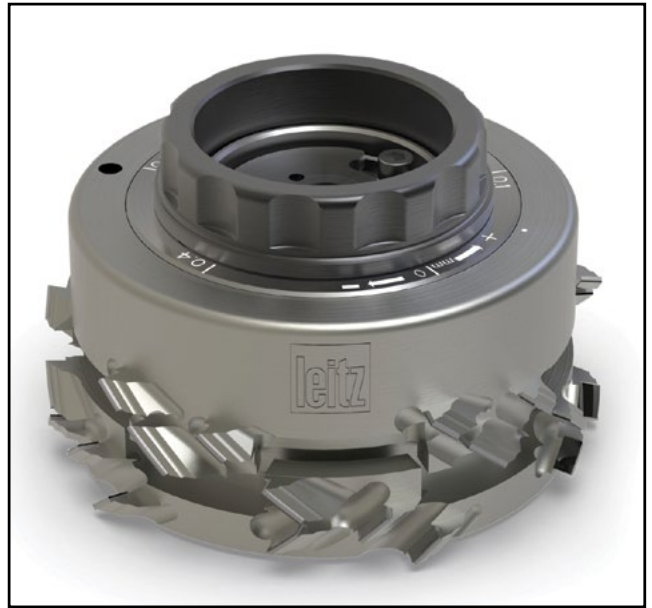
Leitz offers the NiRo Premium collet chuck made of stainless steel in the company's collection. This represents an innovation that combines extremely high durability with great flexibility.

A trapezoidal thread facilitates the transmission of force to the collet chuck, making it quicker and easier to mount shank tools.

A ball-bearing ring also ensures that the tool does not rotate when tightening and thus provides the optimum hold for maximum precision during machining.

With the "solutions in new dimensions," production processes not only becoming more productive, efficient and flexible, but also impressing with their perfect machining quality the Leitz stand at LIGNA proved to be a crowd puller.

For further information tel Leitz on 01279 454530.
Visit www.leitz.com



To find all the latest news online go to www.industrialwoodworking.co.uk

Email us at: bill.willowe@gmail.com

TITUS PRESENTS ALL THE LATEST FURNITURE HARDWARE INNOVATIONS AT INTERZUM

VISITORS to the Titus stand at INTERZUM had the opportunity to experience the advantages of the Titus flagship T-type hinge family, designed for quick assembly and consistent life-time performance.

This hinge now comes with a tool-free hinge cup fixing system for fast and easy mounting, along with the exceptional stability of the recent T-type-i 170-degree hinge with integrated damper effective for tall doors.

Other novelties included the new Push Latch S2 for noiseless opening and confident bounce-less door closing; the Quickfit TL5 "Full Metal Jacket" dowel range for strong and secure connection and the new Tekform Slimline+ - the second generation drawer featuring easily accessible tilt adjustment and reliable front panel engagement.

In the area of custom damping solutions, the highlight on the Titus stand was the new damper for cold environments, demonstrating Titus' commitment to providing custom damping solutions to various industries.

Titus also marked its 50th anniversary at Interzum.

T-type hinge family - Designed for a lifetime of consistent performance

The T-type hinge, featuring a robust design with an integrated damping mechanism, delivers reliable soft closing and consistent performance for up to 200,000 cycles throughout its life-time.

This is particularly significant for thicker and heavier cabinet doors that are prone to sagging.

The newest addition is a PressTo tool-free hinge cup for easy and fast hinge mounting that fixes the hinge to the cabinet with hand pressure.

An effective option for tall doors is the new T-type-i 170 deg hinge version



with an integrated Titus damper. It offers exceptional stability and full accessibility to the cabinet within the storage space. Its wide opening angle, coupled with a "zero protrusion" design makes it an optimal solution for kitchen pantry units with inner drawers.

The T-type is available in two trendy finishes – Noir and TeraBlack and is designed to offer the advantage of three-way snap-on intuitive hinge-to-plate mounting and ConfidentClose - the consumer-preferred way of soft closing the door: fast closing, late start of deceleration action and quiet landing with SoftTouch.

Push Latch S2 – Solution for effortless touch opening of handleless cabinets

The second generation of Titus push opening system for handleless cabinet doors provides noiseless opening and consistent soft landing on a wide range of doors.

The Push Latch S2 mechanism incorporates a damping feature that controls the outward motion generated by a push action, resulting in a decisive, but soft door opening free of any rebound. The door closing is confident, reliable and consistent from the first time.



The door-to-side panel gap adjustment guarantees accuracy and reliability of performance across all applications.

Safety in use is ensured with the firmly fixed adjustment button, which features a safety detachment function designed to prevent accidental removal.

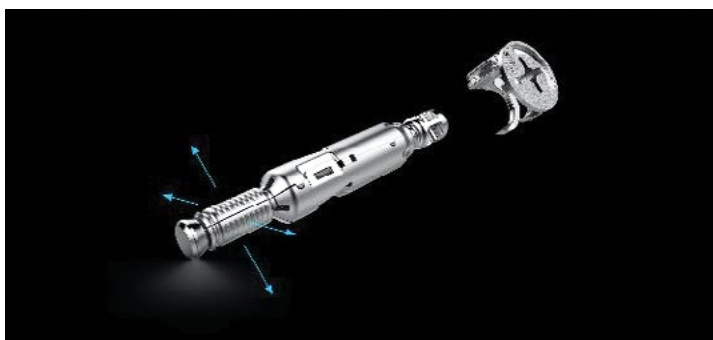
Quickfit "Full Metal Jacket" - Connector technology engineered for easy assembly

Quickfit "Full Metal Jacket" is part of the high-performance Quickfit connector family with greater resistance to dowel pull-out, providing optimal strength and effective performance in multiple wood-based materials, including MDF, chipboard and solid wood.

The Quickfit TL5 dowel is developed to make cabinet assembly fast and easy with tool-free insertion.

Its unique expandable metal sleeve is the main feature that provides reliable engagement in a 5mm dowel hole, allowing for the incorporation of Quickfit dowel insertion technology across a wide range of applications in RTA furniture where 5mm drilling is the standard.

As a result, the use of this dowel ensures the maintenance of rigid furniture construction that doesn't loosen with age, showing high resistance to torsion and dowel pull-out in all circumstances.



System 6 - Second generation of face-boring connectors for fast and flexible cabinet assembly

The new Titus System 6 features a square shape, ensuring easy and accurate knock-in insertion with comfortable tightening, resulting in high-performance joint and sturdy cabinet construction.

This face-boring-only connector is typically used for wardrobes and closets that require the continuous building of segments in limited space.

Assembly has never been that easy with the use of a tool-free Quickfit

INTERZUM REPORT... INTERZUM REPORT... INTERZUM REPORT

dowel, as it provides ultimate onsite flexibility. Its push-in design significantly simplifies and speeds up the installation process, keeping users free to change their cabinet design at any time.

This feature is particularly useful, if the shelf needs to be moved, or the dowels are inserted into the wrong hole.

The square shape offers an enhanced look to the furniture with less prominent hardware, which doesn't need to be hidden.

Thanks to its specific technical and design solutions, it enables higher competitiveness and an efficient manufacturing process.

Introducing the new Tekform Slimline+ drawer, the latest addition to Titus drawer range.

Tekform Slimline+ drawer – Tilt adjustment with easy access at the front of the drawer.

Based on the Slimline design, this new drawer incorporates a scope of new features and design innovations from Titus, making it an ideal choice for those looking for a high-quality, reliable and easy-to-use drawer.

One of the stand-out features of the drawer is the three-dimensional adjustment mechanism and front panel connection making engagement and disengagement reliable and easy.

The adjustment mechanism enables height, side and tilt adjustment, which can be accessed at the front of the drawer, simplifying drawer alignment.

The front panel connector has an upgraded clipping mechanism that ensures reliable drawer front engagement.

Another key feature is the Titus damper, featuring advanced Adaptive Response Technology (ART), which provides a smooth and controlled movement.

The ART allows the drawer to adapt to the closing speed to assure life-long consistent damping, optimal effortless pull-opening force and smooth closing.

In addition to these features, Tekform Slimline+ drawer is compatible with the Tacto push-to-open system for drawers.

Adaptive Response Technology (ART), in combination with the push-opening system, allows for easy and convenient opening without the need for handles, ensuring a seamless and effortless experience.

The Tacto system can be mounted at the same time as the runner, or retro-fitted at any time in the future.

This reduces stock complexity and makes it easy to upgrade the drawer as required whilst still retaining the slim 14mm sides design, the EasyFix front panel connector with tool-free insertion, and the innovative Titus damper for reliable and quiet ConfidentClose.

Slidix Centro – Soft to open, soft to close

Slidix is a comprehensive range of damping solutions for applications in internal sliding door systems, wardrobes and drawer systems from cabinet slides to refrigerators.

Slidix Centro mechanism is designed for use in the middle door soft closing and centring.



The system's key feature is integrated Titus hydraulic damper technology, which enables reliable soft closing in both directions, consistent performance at any closing speed and smoother soft closing with reduced re-bounce.

Additionally, the system reduces the pull-open force, ensuring that the door opening is easy and comfortable.

Slidix Centro can be easily customised to meet specific customer requirements for weight, friction and speed.

Its compact design can accommodate dampers of various forces, enabling optimal soft closing on doors weighing between 15 and 40kg.

For furniture manufacturers, this means that its compact size minimises the impact on their design eliminating the need for significant adaptation.

Slidix Centro features a dedicated activator that can work with other Slidix mechanisms to provide a complete set of soft-closing systems for large wardrobes with three or more doors.

RV Push locks – Reliable locking of cabinets for recreational vehicles

The range of push locks and handles from Titus is designed to provide secure locking of cabinets during transit for a variety of applications in recreational vehicles, boats, and yachts.

These locks are specifically engineered to ensure that cabinets remain closed and secure during transit, preventing any accidental opening, or damage to the contents inside.

The Push Latch RV is the latest addition to the range, offering a universal push-opening system for doors without handles.



It enables effortless push-opening, as well as secure and comfortable door locking.

Mounted at the centre of the door, it allows for opening by pressing any point on the cabinet door.

Its oval hole design and counter plate enable the adjustment of the door gap, providing a precise definition of a door-to-side panel gap, which ensures reliable and consistent push-to-open action.

Multi-purpose damping technology - Damper for cold environments

As part of Titus's "Engineered for Purpose" philosophy aimed to improve customers' competitiveness with Titus products, the company has launched a damper designed for cold environments.

This damper has been proven to perform reliably in temperatures as low as -30 degC, maintaining consistent damping performance in all conditions.

The Titus damper for cold environments ensures smooth and silent closing without re-bounce, making it highly efficient for damping objects in cold environments' consumer appliances, such as freezers, refrigerators and wine coolers.

For further information tel Titus on 01977 682582.
Visit www.titusplus.com

To find all the latest news online go to www.industrialwoodworking.co.uk

Email us at: bill.willowe@gmail.com

LEITZ PROVIDING ALL THE TOOLING KNOWLEDGE YOU NEED AND IT IS TOTALLY FREE

WHETHER it's the machine operator, the work preparation department of the foreman in the individual processes in woodworking and plastics processing, questions about the tools used can arise again and again.

In addition to the Leitz specialists, the LeitzXPert online application will also provide answers in the future. It contains tool expertise and information on almost all of the company's standard products. Accessible free of charge, the data are provided either via the LeitzXPert app, or online via a browser-based Leitz knowledge platform.

LeitzXPert has already been presented as a study at LIGNA in 2019. In the meantime, the application has now matured and will be offered as a fully-fledged information platform in the future. Tool identification is very simple by entering the product ID number, or via a QR or barcode.

In addition to the product data from the Leitz Lexicon, the user is immediately offered additional product-related information, including videos. However, that is not all. LeitzXPert also offers calculation programs for important application data in woodworking and plastics processing.

Visitors to LIGNA were able to experience this new "knowledge for your pocket" in a hands-on way at the Leitz trade fair stand.

Leitz has also included a product search so consumers with Leitz products can save time and rely on the company's database of product information. With customer support available in the app, there's never been an easier time to machine with Leitz tooling.



Solutions in new dimensions

- Calculate cutting speeds.
- Calculate RPM.
- Product search.
- Inbuilt customer support.

GET IT ON



Google Play



Download on the
App Store

Leitz Xpert App



For further information tel Leitz on 01279 454530.
Visit www.Shop.leitz.org

NEW LIBERON SUPERIOR PROTECTION WOODSTAIN



For further information
visit <https://www.liberon.co.uk/>

BETTER weather means that now is the perfect time to turn your attention to your home's exterior woodwork. Time spent now properly protecting it means that it will be shielded from the summer sunshine that can damage it and the worst that autumn and winter can throw at it, saving you repair time and money in the long run. You need to make sure external woodwork is water resistant so that it won't rot. Applying a decent woodstain is the effective way of creating a barrier, which protects the wood from water and the sun. If you also have a certain colour tone in mind for your external woodwork, then woodstain is ideal for achieving it.

Choosing a woodstain isn't something you do every day. It's a good idea to go with a long-established, trusted brand with the experience to offer only reliable products you can trust. And make sure you select a woodstain with good longevity. Check out the new 'Superior Protection Woodstain' from Liberon, the woodcare experts. Ideal for outdoor cladding, window frames or doors, Liberon's Superior Protection Woodstain has an 8-year guarantee for outstanding protection: that's the kind of staying-power you need.

With a quick-drying satin finish that enhances

exterior timber, the new woodstain is smooth and simple to apply. Whilst being water-repellent, it nevertheless has a formulation that makes it microporous once dry, which allows wood to breathe. After just 3 hours the first coat is dry, so that you can get on with applying a second coat, which is all that is needed. So, unlike most other comparable woodstains, you can get the job done in one day, which let's face it means more R&R time for you!

With a non-drip formulation, it's suitable for most woods, hard and soft, new or old and can be applied over most existing woodstains. Its formulation makes it flexible with wood movement. This great quality woodstain is water-repellent and has UV filters, making it ideal for outdoor woods that are exposed to bad weather conditions or lots of sun.

Liberon Superior Protection Woodstain is available in six colours, including Clear, Light Oak, Medium Oak, Dark Oak, Mahogany and an attractive grey shade called Charcoal. Colours are formulated in a satin finish. Available in 750ml and 2.5L tins, the woodstain has a recommended retail price of £18 and £35 respectively with 750ml enough to cover 9m². The 2.5L tin is enough to cover 30m².

The Woodwork Dust Control Co Ltd

Leaders in Dust Control Technology

A Complete Wood Waste Extraction Service to all Timber Industries

- ★ Design, Manufacture, Installation
- ★ Large hopper filters, fans, cyclones
- ★ Small bag filters, rigid ductwork, flexible hose
- ★ LEV COSHH testing, assessment, service
- ★ EWI-THERM Wood burning stoves
- ★ Fast nationwide service



Contact us for our FREE product catalogue:

Tel: 01844 238833 Fax: 01844 238899

Email: enquiries@woodworkdustcontrol.co.uk

Web: www.woodworkdustcontrol.co.uk



MORE SUCCESS FOR VENJAKOB AT LIGNA

THE launch of the roller coater VEN COAT by WO-TECH was a complete success for Venjakob at LIGNA.

For the first time, the East Westphalian specialist for finishing technology dedicated an entire area of its booth space to roller coating machines. Visitors were able to see for themselves the above-average quality of Venjakob's product range during a coating demonstration.

For several years, the company, together with its technology partner WO-TECH, has been developing extremely low-vibration roller coating machines for the application of paints, fillers, or hot-melt adhesives.

For LIGNA, one machine was equipped with a soft roller. This coated furniture fronts with large profile depths with a UV coating material, which was then cured using LED UV.

Resource and energy saving opportunities - an important topic

Venjakob proved its innovative strength in terms of process improvement. Developed modifications to the pumps for the spray coating media allow coating material to be saved in the case of rinsing losses.

Furthermore, a combined recirculation air system saves heating costs. To save energy and resources, for example, the VEN SPRAY PERFECT coating machine can be equipped with a combined recirculation air system and a special air treatment system for air humidification. The combined recirculation system can, for example, in addition to the spray booth, also supply a 10-level dryer with the humidified air.

A separate water circuit could be dispensed with. In addition to the reduction in heating energy and CO2 emissions, the pollutant load in the wastewater is also reduced.

Visitors to LIGNA could find out exactly how these and other savings were achieved and what further developments there were from Venjakob in the field of coating technology.

For further information tel Venjakob GmbH & Co KG on 0049 5242 9603. Visit www.venjakob.com



VEN SPRAY ONE spray coating machine for reproducible surface results in top quality. Easy to operate by one operator. It is ideal as a replacement, or supplement to the manual spray booth.