

DO YOU
WANT
THIS
SPACE
FOR £50
A MONTH?

bill.willowe@gmail.com

INDUSTRIAL WOODWORKING

2025 ISSUE N^o. 12

DO YOU
WANT
THIS
SPACE
FOR £50
A MONTH?

bill.willowe@gmail.com

XYZ WOODWORKER: THE CNC REVOLUTION IS SHAPING THE FUTURE OF JOINERY OPERATIONS

XYZ WOODWORKER: Precision Meets Productivity in Modern Joinery

IN A world where precision, speed and adaptability define success in the furniture and joinery industries, CNC technology has firmly established itself as a cornerstone of innovation.

Leading this revolution is XYZ, a global force in CNC routing systems, whose latest creation - the XYZ CNC Router - is redefining efficiency and craftsmanship for furniture makers and joiners alike.

Whether it is custom cabinetry, high end furniture, or large-scale joinery installation, the XYZ WOODWORKER has rapidly gained recognition as a transformative tool that enables professionals to deliver top-tier work, whilst reducing production times and minimising manual errors.

As demand grows for intricate designs, sustainable production and lean workflows, XYZ delivers a solution that bridges traditional craftsmanship with next-generation technology.

Designed for the Demands of Woodworking

The WOODWORKER CNC router is not just another machine on the factory floor, it is a robust production partner engineered specifically with the needs of woodworkers in mind.

Its customisable architecture is one of its stand-out features, allowing operators to tailor machine configurations based on the scope and volume of their projects.

From its 10in high gantry clearance to its compatibility with accessories, such as axis devices and vacuum pods, the WOODWORKER facilitates versatile applications. This makes it ideal for businesses that handle a variety of materials and require the flexibility to switch from simple cabinet components to ornate furniture detailing with ease.

Power and Precision in Every Cut

The heartbeat of the WOODWORKER is its high-power direct servo drives and helical rack system, delivering smooth and accurate motion. This combination ensures clean, splinter-free finishes on everything from MDF and plywood to high-pressure laminates (HPL) and solid hardwoods. The system excels in high-speed operations without sacrificing quality - a critical asset for high-volume production environments.

Customers can choose from spindle configurations ranging from 5HP to 15HP, paired with an optional 9-position drill bank for increased speed and multi-tasking capabilities.

The result?

Unmatched throughput with minimal downtime. Tool changes are lightning fast thanks to a range of automatic tool changers - available in 7,10,14 or 21 position options - boosting productivity and enhancing operator convenience.

A Cleaner, Safer Workshop Environment

XYZ understands that efficiency extends beyond output; it also includes maintaining a clean and safe workplace. The WOODWORKER is equipped with a high-volume 4in dust collection system featuring an oversized dust



boot, high flow manifold and a thoughtfully designed flow management system.

This set-up ensures efficient removal of both fine particulate matter and large wood chips, protecting workers and machinery alike, whilst meeting stringent industrial safety standards.

Enhancing workflow with Smart features

What truly sets the XYZ WOODWORKER apart is its integration of Smart manufacturing enhancements. One such feature is the optional automated label printer (ALP), a simple, yet powerful tool that automates identification during assembly. This seemingly small feature significantly reduces manual sorting time and assembly errors, streamlining production and elevating throughput.

The optional rotary axis equipment offers 360 deg machining capabilities, opening the door to more intricate and decorative woodwork. This is especially useful for bespoke joinery projects, or furniture pieces requiring curved and turned components.

Built to Last, Engineered to grow

With more than 30 years in the CNC manufacturing space and with thousands of machine configurations offered, XYZ is a name synonymous with durability and adaptability.

The WOODWORKER continues its legacy, built at XYZ's state-of-the-art manufacturing facility in Ontario in Canada.

Each machine is supported globally through an extensive network of sales and technical support offices. This commitment to long-term reliability ensures that manufacturers achieve sustained value over time.

... continued on page 2

To find all the latest news online go to www.industrialwoodworking.co.uk

Email us at: bill.willowe@gmail.com

PROJECT TO TRANSFORM UK'S ORGANIC WASTE INTO COMMERCIAL GOODS GETS EXTRA FUNDING

AN ASTON University project which transforms material such as factory waste into heat, power and other commercially valuable bio-products is to be extended for another year and receive an extra £700,000 of Government support.

The Biochar CleanTech Accelerator is part of the West Midlands Innovation Accelerator programme, which was established in 2022 and managed by the West Midlands Combined Authority. The programme is led by Innovate UK and operates on behalf of UK Research and Innovation.

The University uses heat technology, called pyrolysis, to produce oils, gases and other low carbon product materials from residue, such as sawdust and agricultural waste, contributing to a regional target of export contracts worth over £200 million.

Being part of the West Midlands accelerator has allowed complex technical research by the University's Energy and Bioproducts Research Institute to be applied with UK companies to create new products and business opportunities in growing markets.

The additional funding will help the University to further develop its research. It is part of a new national £30 million of extension of the Innovation Accelerator programme, which focuses on locally led innovation to drive economic growth and advance technology across the West Midlands, Glasgow City Region and Greater Manchester.

'Last year we heard the project was being extended and now we are delighted to find out this month we will receive £700,000 in new funding,' says project lead of the Biochar CleanTech Accelerator, Tim Miller.

'The Biochar Accelerator helps us collaborate with UK business to



Project lead of the Biochar CleanTech Accelerator, Tim Miller.

use knowledge, facilities and research to win contracts that benefit the region both economically and environmentally,' he adds.

'For example, last year our researchers used biochar, a sustainable form of charcoal, to make office items for Birmingham law firm, Mills & Reeve.

'They were able to kit out their new city centre building with durable plant and pen pots made from material produced at our pyrolysis demonstrator. The next step is to explore use in the aircraft, car and construction industries.

'The West Midlands has always been a region driven by innovation and today we're building on that proud legacy as a leader of the UK's green tech revolution,' says Mayor of the West Midlands, Richard Parker

'The latest Innovation Accelerator funding means that we have now invested £2.5m in the pioneering Biochar CleanTech Accelerator.

'It's helping businesses take sustainable, low carbon solutions to the world. They are turning waste products such as sawdust and agricultural by-products into clean energy and better soil for food production.

'In the West Midlands, we're investing in top talent and the cutting-edge research that's turning climate action into economic opportunity, as well as securing the future of our region,' concludes Richard Parker.

For further information visit
www.aston.ac.uk/biochar-cleantech-accelerator

XYZ WOODWORKER: THE CNC REVOLUTION IS SHAPING THE FUTURE OF JOINERY OPERATIONS

... continued from page 1

The robust construction and advanced technology provides peace of mind to operators, knowing that the router will continue to deliver constant results through years of heavy-duty use.

Tailored for the Furniture and Joinery Market

In the words of many industry professionals, success in joinery comes down to the "three P's" - Precision, Performance and Productivity. XYZ addresses all three with surgical precision, empowering furniture and joinery professionals to elevate their craft whilst scaling the options.

The high gantry design, for example, gives users more vertical space to work with layered, or assembled components. Likewise, its multiple head configurations allow businesses to expand production capacity, as they grow, adding additional spindles, drills and accessories with ease.

This level of customisation and foresight makes XYZ more than just a machine supplier - it is a strategic partner in growth. Whether you are running a boutique joinery workshop, or a large scale joinery factory, the WOODWORKER has the tools and technology to help your business thrive.

Trusted by Professionals. Backed by Expertise

With over three decades of engineering excellence and customer trust, XYZ is not just delivering a product - it is delivering a promise. The company's routers are already making an impact in workshops across the



UK and around the globe, helping businesses reduce lead times, cutting waste and produce exceptional work with repeatable accuracy.

Support does not end at purchase. XYZ provides comprehensive after sales service, training and technical support, ensuring that users derive the best from their investment. The knowledgeable team from XYZ is always on hand to advise on set-up, maintenance, or expansion needs.

A Glimpse into the Future

As the woodworking and joinery industry continues to evolve, the XYZ WOODWORKER is a beacon for what is possible when tradition meets technology.

By combining intuitive design with cutting-edge innovation, XYZ empowers professionals to go beyond what they thought possible - shaping not just materials, but the future of furniture making.

From flawless finishes to complex 3D carvings, the WOODWORKER is more than a router - it is a heartbeat of a modern workshop. For joiners and furniture makers who want to do more, faster and smarter, the XYZ WOODWORKER stands ready.

For further information tel XYZ on 01952 291600.
Visit www.axyz.com

To find all the latest news online go to www.industrialwoodworking.co.uk

Email us at: bill.willowe@gmail.com

CLERKENWELL DESIGN WEEK TO BE LARGEST YET

Clerkenwell Design Week will return to London's EC1 from May 20-25 2025 for its 14th edition.

THE event is set to be the largest yet, introducing three new exhibition venues. Among them are the historic Medieval and Tudor buildings of The Charterhouse and Charterhouse Square, which will host artist, Alex Chinneck's major new public artwork; the capital's oldest parish church, St Bartholomew the Great and Studio Smithfield – a Grade II Listed building above the iconic Smithfield Market.

As ever, the 2025 edition will feature a myriad curated events spanning more than 16 venues and 160 local design showrooms throughout Clerkenwell.

'We're thrilled to be back in Clerkenwell this May with our largest programme yet, both in scale and content,' says design division director at Media 10 (the organiser of the annual design festival), Marion Cera-Marle.

'The new venues, including some of London's most historic landmarks, will provide a stunning backdrop for presenting some of the world's most exciting design brands. We're also partnering with incredible international names, from country pavilions to leading media outlets from the UK and US,' she says.

The Charterhouse will serve as a striking backdrop for contemporary furniture, decorative lighting and luxury finishes. It will feature an array of global bathroom brands, from Geberit and Toto to Bette, C.P. Hart and Victoria and Albert Baths. Also joining them will be British fabric and wallpaper company Colefax and Fowler.

In addition to design brands, the venue will host the festival's official talks series - Conversations at Clerkenwell. For 2025, the talks will take place in a theatre designed by the London-based design studio Kapitzka.

Curated by PR and brand consultant, Katie Richardson, the series will include conversations with leading and emerging designers and, as always, will cover the topics of the day, with the full programme to be announced in the spring.

Outside, Charterhouse Square will showcase products for outdoor living and hospitality, alongside Alex Chinneck's new sculpture.

Set within St Bartholomew the Great, a 900-year-old Grade I listed medieval church, Church of Design will offer a breathtaking setting for modern design showcases.

Exhibitors will include French interiors specialist, Roche Bobois. Meanwhile, new to this year's edition, CDW has partnered with Sandow, the US-based publisher of Interior Design, Design Milk and Metropolis.

As part of this collaboration, Sandow will host design conversations, Design Dialogue by Sandow, inside the church throughout the festival.

In the lead-up to the event, the publisher has launched its first-ever CDW Product Awards, celebrating the most innovative and visionary products shaping the future of design. Submissions are now open.

In addition to the new venues, existing locations will house a variety of product-focused exhibitions

- Clerkenwell Green and Installations – Structural stone will take centre stage in the recently refurbished Clerkenwell Green, where Albion Stone and Hutton Stone will reveal a special new commission by Hawkins\Brown, demonstrating the durability and beauty of British stone bricks. Nearby, the ambitious Stone Tapestry structure by the Stone Federation will be featured, along with showcases from exhibitors specialising in contract and workplace interior products and solutions.
- Project – Focused on contract furniture and surface design.
- Design Fields – Showcasing contemporary furniture, lighting and product design with an international focus. The Design Meets talks series will also return, inviting representatives from trade bodies and associations to engage in a range of intimate, industry-led discussions.
- Light – Home to global lighting companies. Darc Thoughts, Darc's talks series, will also return.

For further information visit www.clerkenwelldesignweek.com



The Charterhouse and Charterhouse Square – featuring Alex Chinneck's flagship installation

To find all the latest news online go to www.industrialwoodworking.co.uk

Email us at: bill.willowe@gmail.com

MOMENTUM BUILDS FOR LIGNA 2025

LIGNA in Hanover from May 26-30 2025 will be one of the most important milestones for the woodworking and wood processing industry on the way to the hoped-for industry turnaround.

In excess of 1,200 exhibitors from all over the world will occupy around 112,000m² of exhibition space, sending a strong signal in a challenging industry situation.

'In view of the economic conditions, we are very grateful to everyone involved for their confidence in LIGNA,' says Chairman of the Executive Board, Deutsche Messe AG, Dr Jochen Köckler.

'We are convinced that the world's leading trade fair for the industry will ensure greater productivity and sustainability through fantastic innovations and thus provide the much-needed motivation and confidence for investments,' adds Dr Köckler.

Head of LIGNA at Deutsche Messe AG, Stephanie Wagner sees the strong industry response to LIGNA as a clear vote of confidence:

'We are looking forward to a powerful LIGNA anniversary edition and are convinced that the trade fair, together with its exhibitors and visitors, has the potential to inspire renewed confidence in the market. It would not be the first time that LIGNA has served as the decisive catalyst for restarting the economic engine,' she says.

The significance of LIGNA as the world's leading trade fair remains strong and constructive dialogue at LIGNA 2025 is more crucial than ever.

'LIGNA is the ideal forum for us to meet global customers, showcase our innovations and bring the trade fair's motto – "Linking people, driving innovation" – to life. 'Moreover, we greatly benefit from the exchange of ideas at the event,' says chief executive officer of Siempelkamp Business Unit Capital, Samiron Mondal.

Like Samiron Mondal, whose company has been exhibiting at LIGNA since its inception, technical managing director of Venjakob, Rudolf Eickoff also underscores the importance of LIGNA 2025:

'We are currently facing intense competition in the industry, with declining sales in some areas. This makes it all the more important to discuss the latest sustainable production methods to ensure that our customers can remain competitive in the long run,' says Rudolf Eickoff.

'We firmly believe that direct contact at the trade fair not only fosters trust but also lays the foundation for successful projects,' concludes Herr Eickoff.

LIGNA Caught Between Two Scenarios

Industry experts and market observers believe that the woodworking and



In 2025 the world's leading trade fair for the woodworking and wood processing industry is celebrating its 50th anniversary.



Key topics of LIGNA.Circular will include the necessary changes in collaboration among stake-holders and the transformation of business models, with a focus on co-operation, innovation, servitisation and transformation.

wood processing industry – which has been under extreme pressure in recent months, particularly in Europe – could see a recovery in the second half of the year.

However, ongoing economic challenges are fuelling uncertainty and eroding business confidence. Unclear political developments and their economic impact have also led to delays in crucial investment decisions.

'We are navigating politically tense times concerning tariffs and exchange rates – something many of us have never experienced before,' remarks Dr Jochen Köckler.

'Regardless of broader economic conditions, the woodworking and wood processing industry remains indispensable. Wood, as a raw material, is the ultimate symbol of CO₂ storage and sustainability,' adds Dr Köckler.

Industry, Trade, and Forestry: Shaping the Future Together

The three key themes of LIGNA 2025 – CONNECTIVITY, SUSTAINABLE PRODUCTION, and ENGINEERED WOOD – are specifically designed to engage stake-holders across the woodworking community, including industry, trade and forestry.

'The digital connectivity for a sustainable wood industry along the entire value chain, with wood and wood-based materials as the materials of the future – summarises in one sentence why the industry, craftsmanship and forestry must stand together in the future,' says Stephanie Wagner.

'With connectivity, sustainability and future materials, the focus topics highlight the three core elements of this transformation and will be prominently featured across all seven exhibition areas,' adds Stephanie Wagner.

New and proven formats at LIGNA 2025

With LIGNA.Circular in Hall 12 and LIGNA.TruckStop in the open-air-site, two new formats will



LIGNA.TruckStop will no doubt be the ultimate destination for joiners and carpenters eager to experience the latest advancements in power tools, fittings and fastening technology with show trucks, transporters and vans packed with practical solutions on display.

To find all the latest news online go to www.industrialwoodworking.co.uk

Email us at: bill.willowe@gmail.com

make their debut at LIGNA's anniversary edition in May.

"Thinking in circles" is the guiding principle of the new LIGNA.Circular format, which will be integrated into the LIGNA.Stage program. It will specifically focus on various aspects of circular value creation.

Through presentations and panel discussions, CADEMI, the official LIGNA.Circular partner, will showcase sustainable innovations in processes, materials and products.

Key topics will include the necessary changes in collaboration among stake-holders and the transformation of business models, with a focus on co-operation, innovation, servitisation and transformation.

The LIGNA.Circular program will also feature practical approaches and best-case studies, covering topics, such as machinery and processes, raw materials and wood-based materials, product design and recycling.

LIGNA.TruckStop is the ultimate destination for joiners and carpenters eager to experience the latest advancements in power tools, fittings and fastening technology.

Show trucks, transporters and vans packed with practical solutions from brands like Festool, Hettich, SawStop and Swiss Krono will be on-site in the open-air site near the wooden Expo roof.

In addition, a stage tailored to the trade will host live presentations, expert interviews and hands-on demonstrations throughout the event..

The central LIGNA forum will once again be the LIGNA.Stage in Hall 12, featuring solution- and user-oriented presentations aligned with LIGNA's key themes, as well as discussions on major market and industry trends.

Meanwhile, the LIGNA.Campus in Hall 11 will provide technical colleges, universities of applied sciences and universities with a platform to present their educational programs.

For first-time VDMA exhibitors and start-ups, LIGNA.FutureSquare – located in Hall 12 alongside the Stage and Circular – will showcase innovative products and services.

And for those seeking career opportunities, LIGNA.Recruiting is the place to be. This format offers direct access to the industry's leading companies, providing valuable insights into career paths and professional development opportunities.

For many years, the Carpenters' Day on Tuesday of the trade fair has been a key highlight of LIGNA's supporting program. On this day, carpenters from across Germany gather at the exhibition grounds in Hannover to experience a tailored program, including exclusive trade fair tours and networking events.

At LIGNA 2025, the guild association, Tischler Schreiner Deutschland (TSD) will once again be on-site, providing insights into the latest services and products from its professional associations.

Additionally, two key initiatives will be featured: The national design competition "Die Gute Form 2025" and the new TSD-project "Ergonomie der Werkstatt", which aims to equip guild member companies with practical and recognised tools and workshop set-ups to create working spaces that promote efficiency, well-being and job satisfaction.

As part of this initiative, 18 model businesses are currently being developed in collaboration with workshop equipment manufacturers and suppliers.

Awards and Championships at LIGNA 2025

LIGNA will once again host prestigious awards and competitions, including: The Forwarder Championships, Die Gute Form, The Hans-Jürgen Narjes Prize and the German Timber Construction Prize, which has even garnered attention from the Federal Ministry of Housing, Urban Development and Construction.

The German Timber Construction Prize winner will be honoured on LIGNA Tuesday at 10am in Hall 12 on the LIGNA.Stage.

About LIGNA

The world's leading trade fair for the woodworking and wood processing industry is jointly organised by Deutsche Messe and VDMA Woodworking Machinery in Hannover and is celebrating its 50th anniversary in 2025.

It showcases the entire range of products and services for the primary and secondary industries – tools, machines and systems for custom and mass production, surface technology, wood-based panel production, sawmill technology, energy from wood, machine components and automation technology, as well as machines and systems for forestry.

For further information visit www.ligna.de



Lectures and seminars of a wide variety of subjects will be a prominent feature over the 5-day event.

To find all the latest news online go to www.industrialwoodworking.co.uk

Email us at: bill.willowe@gmail.com

VENJAKOB PRESENTS INNOVATIVE SOLUTIONS IN SURFACE TECHNOLOGY IN HANNOVER

VENJAKOB Maschinenbau will showcase innovative solutions for surface technology at LIGNA 2025 in Hannover under the slogan "Get ready for the future".

Those attending the show should visit Venjakob in Hall 16 Booth C22 in order to explore the latest in automated surface finishing and process optimisation.

Switch to automated finishing:

The entry level system VEN SPRAY ONE allows for a simple and cost-efficient transition to automated coating, which is ideal for companies facing skilled people shortages, whilst maintaining efficient production in reproducible high-quality.

Next generation, VEN SPRAY ADVANCED:

A highlight is the VEN SPRAY ADVANCED spray coating machine, developed through close collaboration with customers and offering maximum flexibility, efficiency and cost efficient effectiveness.

Innovative intelligent production solutions:

Venjakob will also feature innovative add-ons, such as OPTI-feed, the

OPTI-track and the CMS Zero colour management system, focusing on sustainable and resource/energy-efficient solutions.

Visitors can discuss trends in industrial automation, Smart factories and energy efficiency.

Venjakob provides all necessary technologies from a single source, tailored to individual requirements, including roller coating and conveyor technology.

Join Venjakob at LIGNA 2025 to discover how its future oriented solutions can optimise your processes.

For further information visit Venjakob at www.venjakob.de/en/ligna-2025/



IMOS ENHANCING FURNITURE SALES & PRODUCTION

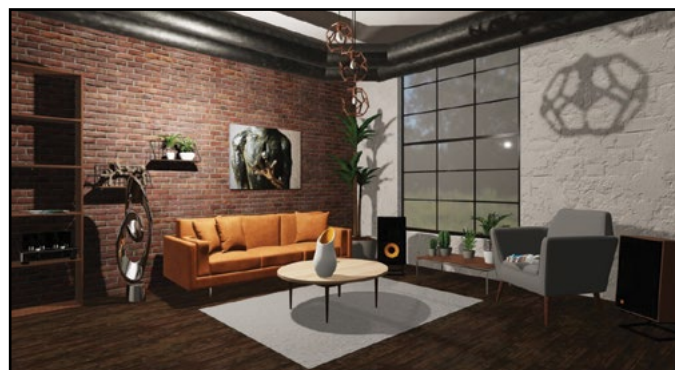
IMOS AG will unveil the latest version of the company's software solution at LIGNA - iX 2025. Those attending the show can look forward to numerous new features and various improvements in the software's usability.

Additionally, the presentations at LIGNA will showcase the impressive capabilities and versatility of the newly improved software.

The new release brings significant functional enhancements across the iX CAD, the iX CAM and iX NET product groups.

Notably, imos AG is setting new industry standards by integrated AI into the company's software products. These AI components aim to optimise work flows and provide better support for users in their daily tasks.

For further information tel the company on 00 49 5221 976 145.
Visit www.imos3d.com



To find all the latest news online go to www.industrialwoodworking.co.uk

Email us at: bill.willowe@gmail.com

WOOD-MIZER RETURNS TO LIGNA WITH CUTTING-EDGE SAW-MILLING AND WOODWORKING TECHNOLOGY

AT LIGNA 2025 Wood-Mizer will unveil a spectrum of innovations from high-capacity industrial lines to compact hobby mills. You will find Wood-Mizer outdoors on Stand K44 and inside in Hall 25 on Stand H05.

Industrial-Scale Productivity

Two fully automated saw milling lines in the outdoor demonstration area will highlight Wood-Mizer's drive to maximise throughput and minimise labour.

The new WM5500 line, paired with the MR250 double-arbor multi-rip saw, processes logs up to 650mm x 254mm and accommodates as many as 32 blades delivering unprecedented precision, energy efficiency and yield.

Alongside it, the WM2500 sawmill (fresh to Europe after US success) and the EG350 edger, integrated with automated log loading and sorting, offer mid-market businesses an industrial-grade solution at an attractive price point.

Machines for Hobbyists and Mobile Milling

Also on Stand K44, Wood-Mizer will stage the European debut of the LX30 hobby sawmill - its smallest, most affordable model, perfect for DIY enthusiasts and part-time users.

The line-up continues with proven workhorses: the LX50SUPER, the battery-powered LT15CLASSIC WIDE (demonstrated with the MP100 moulder for combined sawing and profiling) and the hydraulic LT20START, LT40 and the remote-controlled LT70 mobile mills.

These machines empower on-site milling services, delivering custom-cut lumber with minimal environmental impact. A compact EG100 edger will round out the outdoor display, showing an efficient solution for clean board edging.

Precision Finish Carpentry

For fine woodworking, Wood-Mizer's planer/moulder series takes centre stage. The MP260 and MP360 models showcase versatility in a small foot-print, whilst the new MP410 planer - explicitly engineered for green (wet) timber - makes its debut, ensuring smooth, accurate surfaces before drying.

Modular Industrial Systems

Inside Hall 25 (Stand H05), Wood-Mizer Systems presents turnkey solutions for large scale operations. Visitors to the show can explore the TV6000 twin-head vertical saw and the innovative Drag Conveyor for automated waste and sawdust handling - key components in a fully integrated production line.



Wood-Mizer has been a consistent supporter of LIGNA since 1984.

Visitors also have the opportunity to speak directly with Wood-Mizer's engineering experts about scalable, customisable plant designs.

About Wood-Mizer

Since pioneering the portable band sawmill in 1982, Wood-Mizer has grown into a global leader in sawmilling and woodworking equipment. With over 40 years of innovation, a robust distribution network and a commitment to durability and precision, Wood-Mizer supports timber operations of every size.

A consistent LIGNA exhibitor since 1994, the company continues to push the boundaries of wood processing technology.

*For further information tel Wood-Mizer on 01622 813201.
Visit www.woodmizer.co.uk*



The WM2500 entry-level industrial sawmill.

To find all the latest news online go to www.industrialwoodworking.co.uk

Email us at: bill.willowe@gmail.com

BREAKING LIMITS AND DEFINING THE FUTURE WITH FIRE PROTECTION SPECIALIST, FAGUS-GRECON AT LIGNA

FOR over 50 years, Fagus-GreCon, a specialist in fire protection and measuring technology, has been a key exhibitor at LIGNA. In 2025, the company continues to push technological boundaries, setting new industry standards.

Under the motto "Breaking Limits. Defining the Future," Fagus-GreCon will present ground-breaking innovations designed to make production processes more efficient, safer and more sustainable.

Networking, sustainability and efficiency are shaping the future of the wood and wood-based panels industry. Companies face the challenge of optimising processes, conserving resources and maintaining the highest quality standards.

'As an innovation leader, we at Fagus-GreCon provide the answers to these industry challenges. We develop solutions that address key sector-specific needs and offer the industry innovative approaches for greater profitability,' says head of global marketing at Fagus-GreCon, Thomas Bremner.

At LIGNA 2025, Fagus-GreCon will introduce three major product innovations:

Spark Detection & Extinguishing

Mission Control: The next generation of GreCon spark detection and extinguishing control panels – reducing downtime, costs and increasing efficiency with predictive intelligence.



Particle Geometry Monitoring

2D PARTICLEVIEW: Real-time inline monitoring of particle geometry – enhancing board quality, optimising processes and improving resource efficiency.

Inline Formaldehyde Measurement

GASANALYSER IL: Immediate response to deviations before waste is generated – ensuring continuous monitoring, cost savings and quality assurance. Additionally, Fagus-GreCon will showcase enhanced versions of proven solutions:

Laboratory Formaldehyde Measurement

GASANALYSER MC: Precise results in just 15 minutes – unrivalled speed, maximum precision and no wet chemistry.

Edge Quality Inspection

EDGEINSPECT: Detects precise edge defects where camera-based systems fail – eliminating serial defects, reducing waste and avoiding



complaints.

Chipboard Production

SEGMENTED SCALPER: Optimised material distribution for higher quality and resource savings – reducing material consumption, cutting costs and enhancing quality.

From May 26-30 2025, Fagus-GreCon will present its latest innovations at LIGNA in Hannover and visitors are warmly invited to experience the company's extensive range of new systems and products live at the show in Hannover.

Where?

Fagus-GreCon will be at the exhibition on Hall 26, Stand C42

Fagus-GreCon is a global leader in preventive fire protection solutions, as well as high-precision measuring and inspection systems for industrial applications. The company's solutions enhance safety, quality and efficiency in industries, such as wood-based panels, furniture manufacturing and recycling.

For over 50 years, GreCon has set industry standards in industrial fire protection, safeguarding production facilities with innovative spark detection and extinguishing systems.

In measurement technology, GreCon enables precise process and quality control through state-of-the-art technology.

Headquartered at the UNESCO World Heritage Site is the Fagus factory in Alfeld. The company employs over 700 people worldwide.

For further information visit www.fagus-grecon.com



To find all the latest news online go to www.industrialwoodworking.co.uk

Email us at: bill.willowe@gmail.com

WEINIG & HOLZ-HER PRESENT GROUND-BREAKING INNOVATIONS ON THEIR HOME GROUND IN GERMANY

A TOTAL of 120 years of Weinig and 50 years of LIGNA. It's a double milestone that Weinig is celebrating with high-performance solutions. The focus will be on automation, efficiency and future-proofing.

Weinig is the leading manufacturer of machines and systems for solid wood processing and drives the industry forward with innovative technologies and ideas.

The company offers comprehensive services and system solutions through to turnkey production plants. The customer-oriented philosophy allows the company to respond to specific requirements and offer customised solutions.

Together with the brands Holz-Her, H.I.T and Essetre, Weinig serves the entire process chain, from sawmill to joinery and thus covers all stages of wood processing.

Visitors to the show will be able to experience machinery such as the self-setting Powermat 3000, the WLP 200 vacuum gantry for fully automatic workpiece handling and the HS 200 with delta robot loading. Weinig System Solutions will also be presenting innovative production concepts, including a 3D-animated CLT system.

Together with Holz-Her, H.I.T. and Essetre, the Weinig Group will be demonstrating its strength as a full-range supplier.

Weinig will be celebrating 120 years of company history and 50 years of the company's presence at LIGNA - as an integral part of the show ever since the very first trade fair.

This year, Weinig will be presenting itself stronger than ever. It will not only be showcasing proven solutions for individual needs in panel and solid wood processing, but also offering an impressive range of innovations and new products in Hall 27.

This year, the focus will also be on Weinig System Solutions with individual and holistic solutions in the CLT sector.

The Weinig Group will be presenting more than 45 current machines and solutions over an area of more than 5,000m² and visitors can look forward to exclusive innovations and experiencing them live.

In 2025, WEINIG is once again setting standards in the woodworking sector by laying the foundations for a strong, competitive industry with future-proof, customised solutions and maximum customer focus.

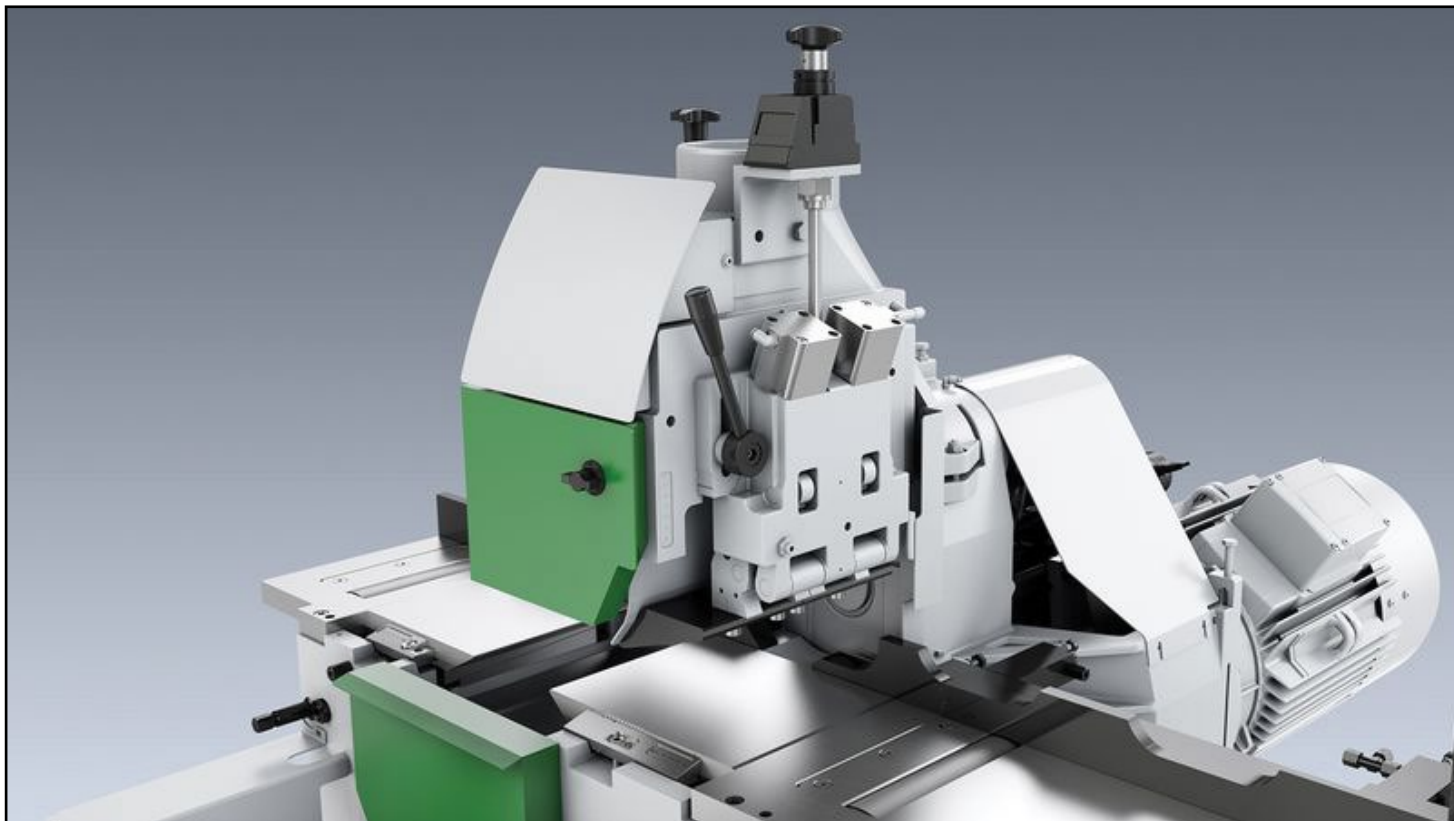
"Made in Germany" represents the highest quality and innovation. Weinig is not only a partner for its customers, but also a catalyst for their success. Through continuous innovation and the targeted expansion of production possibilities, Weinig is ensuring that its customers are always one step ahead and able to achieve maximum productivity in terms of production.

[Weinig sets benchmarks in automation at LIGNA 2025](#)

The self-setting Powermat 3000 enables economical production thanks to fully automatic profile change - even with small batch sizes. The machine reduces set-up times and ensures consistently high quality regardless of the operator.

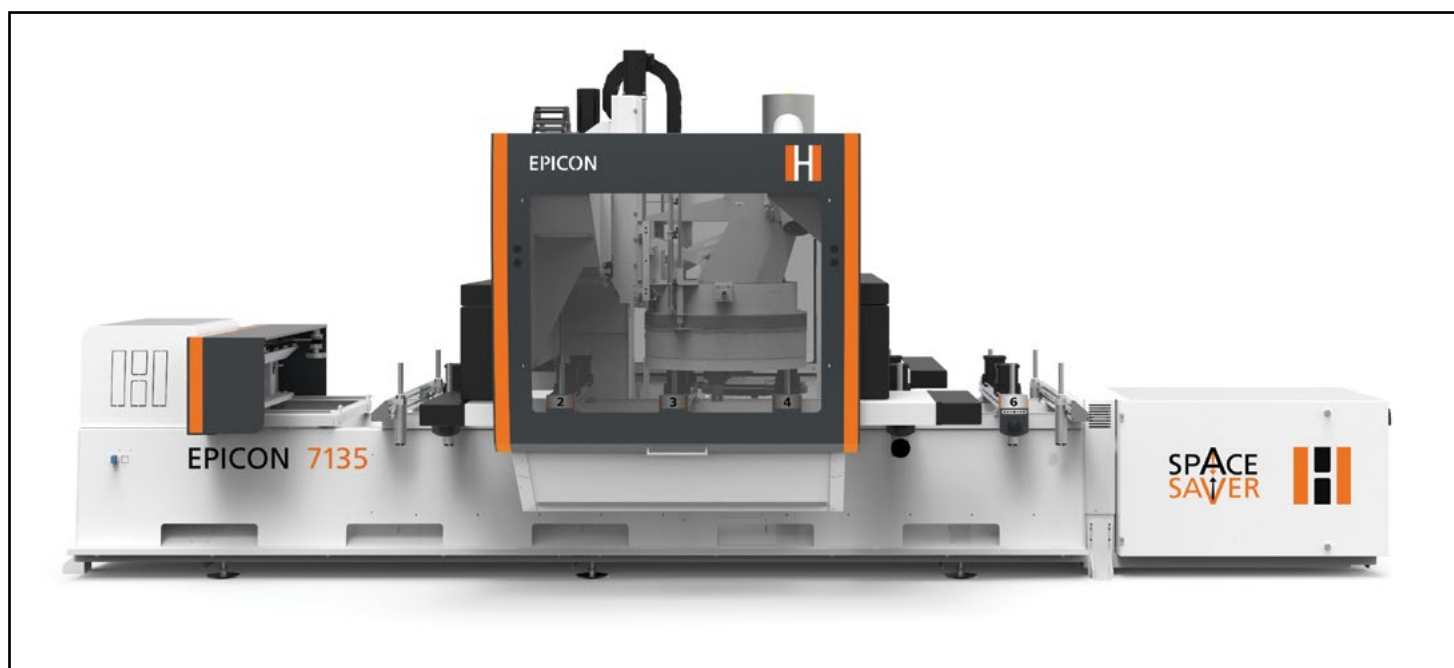
The WLP 200 vacuum portal increases productivity through fully automated workpiece handling. The precise control system ensures optimum machine connection, reduces sources of error and increases process reliability.

The HS 200, with delta robot loading, is Weinig's first integrated complete solution of this kind. It reduces personnel costs thanks to a precise pick & place application.



To find all the latest news online go to www.industrialwoodworking.co.uk

Email us at: bill.willowe@gmail.com



Unsorted incoming material is gently aligned with vacuum grippers and fed to the finger jointing line, making it ideal for fine and sensitive wood.

The delta robot ensures consistent production output across all shifts. In addition, part orientation optimises the spinfeed infeed through automatic quality sorting, e.g. to efficiently process waney edge material.

Parts are sorted based on surface characteristics and aligned, or ejected if the quality criteria are not met – a profitable solution in times of rising personnel costs and a shortage of skilled workers.

The portfolio is complemented by the OptiCut S 90 Superdrill - an innovative cross-cut system with an integrated drilling unit. It enables snipping, routing and drilling in a single operation and combines high flexibility with maximum precision.

The automatic tool change function increases the processing speed and saves valuable time in production. This sets new standards in automation and increase efficiency.

Weinig System Solutions: System solutions and production concepts for the wood processing industry

As a provider of one of the most complete portfolios in the engineered wood sector, Weinig is setting a new standard in woodworking. At LIGNA 2025, visitors will experience a 3D-animated CLT production line up close on a large LED wall - including a virtual factory tour.

Individual projects can also be inspected and planned together with the Weinig System Solutions team at interactive screen stations.

The Essetre Multi-wall surface processing machine with its six-axis processing unit will be demonstrating new possibilities in terms of production. Visitors can look forward to sophisticated solutions for CLT and timber frame construction for the next level in timber house construction.

WoodSave solutions – maximum profit, minimum costs

Weinig is once again revolutionising the woodworking industry with the expanded WoodSave system. WoodSave is known for maximum profit with minimum chipping in surface planing. It is now being extended to include conical lamella planing. Especially in CLT production, this innovation enables even more efficient material utilisation - more usable wood and less waste.

H.I.T. and Essetre as part of the Weinig Group

As part of the Weinig Group, the two companies H.I.T. and Essetre will be exhibiting in Hall 25, Stand N25 (H.I.T.) and in Hall 13, Stand C28 (Essetre).

H.I.T. creates customer-oriented solutions for sawmills, planing and glulam plants, prefabricated house construction and the production of solid wood panel elements and glulam for the construction industry – precisely tailored to every special requirement and to almost every

conceivable layout, which could be employed in the workshop.

On the stand of the Italian manufacturer, Essetre, everything revolves around joinery and surface processing machines for timber construction. With a clear focus on technology, innovation and quality, Essetre will be presenting its latest machines at LIGNA, which are suitable for both individual and series production.

Holz-Her is a leading brand for woodworking machinery and part of the Weinig Group. Holz-Her will be presenting a wide range of new products at this year's LIGNA.

The company, which is characterised by its innovative strength and quality in the field of woodworking, will present a large number of innovations in the field of edge-banding technology, five-axis CNC processing and material handling for door and furniture production.

PUR as easy and safe as never before - Holz-Her sets a new standard in edge-banding.

Holz-Her is the benchmark for flawless furniture appearance and flexibility in crafts and industry. With the new patented Glu Jet 725 PUR PRO, the company is setting a new standard in edge-banding technology.

This hi-tech Glue application system offers a number of advantages that are particularly tailored to the requirements of craftsmen in kitchen construction, furniture making and interior design. This further development of the proven Glu Jet technology sets new standards in edge-banding.

The innovative technology is the new standard in the use of water-proof, reactive PUR glues. The absolute highlight is the new vacuum technology. This makes processing PUR glue even easier and safer for users.

The fully integrated vacuum pump and the completely sealed Glu Jet glue application system remove the moisture from the air - as a reaction partner of the glue - so that it remains available in the system for up to an entire working week. Even if the vacuum drops, no problem: a sensor ensures that the vacuum pump adjusts automatically - even when the machine is switched off.

The unit can be pulled out cleanly on linear guides and swivelled through 90 deg, so that it is completely accessible. This makes it easy to clean, check, or maintain the glue application nozzle.

Naturally, the Glu Jet PUR PRO is equipped with an NC servo axis for automatic height adjustment as standard. The enormous melting capacity of 8 kg/hr is also remarkable.

'Thanks to the extensive improvements in the new Glu Jet system, Holz-Her customers always have PUR fully under control,' says Holz-Her GmbH product manager, Angelo Amoco

The proven advantages of Glu Jet technology remain and continue to offer users maximum flexibility, rapid readiness for use and a zero joint appearance.

The innovative technology ensures perfect interaction between glue, edge-band and material board - regardless of edge-band type, or glue type.

Whether EVA, or PUR glue, as a cartridge, or granulate - the system enables flexible processing with a short heat-up time of just three minutes and minimal energy consumption.

Thanks to Glu Jet thin-film technology, the glue penetrates deep into the panel structure and ensures a high-strength bond with a flawless zero-joint appearance. The on-demand melting maintains full adhesive strength without any loss of quality, due to repeated heating.

The new era of space-saving five-axis CNC machining with the EPICON 7135

With the new EPICON 7135 "SpaceSaver", Holz-Her is ushering in a new era of space-saving five-axis CNC machining. Its compact design makes it the ideal solution for companies with limited space, without compromising on performance and flexibility.

By using the new bumper technology, the EPICON offers maximum safety for the operator during machining. At the same time, this technology makes it possible to dispense with step mats, or safety fences. This opens up new variable installation options - placement in corners, or directly against a rear wall is no problem.

The new 360-degree concept allows the operator to approach the

machine from all sides. This ensures easy care and maintenance. A major advantage of this is that the area in front of and behind the machine is completely accessible, which makes machine loading and unloading much easier.

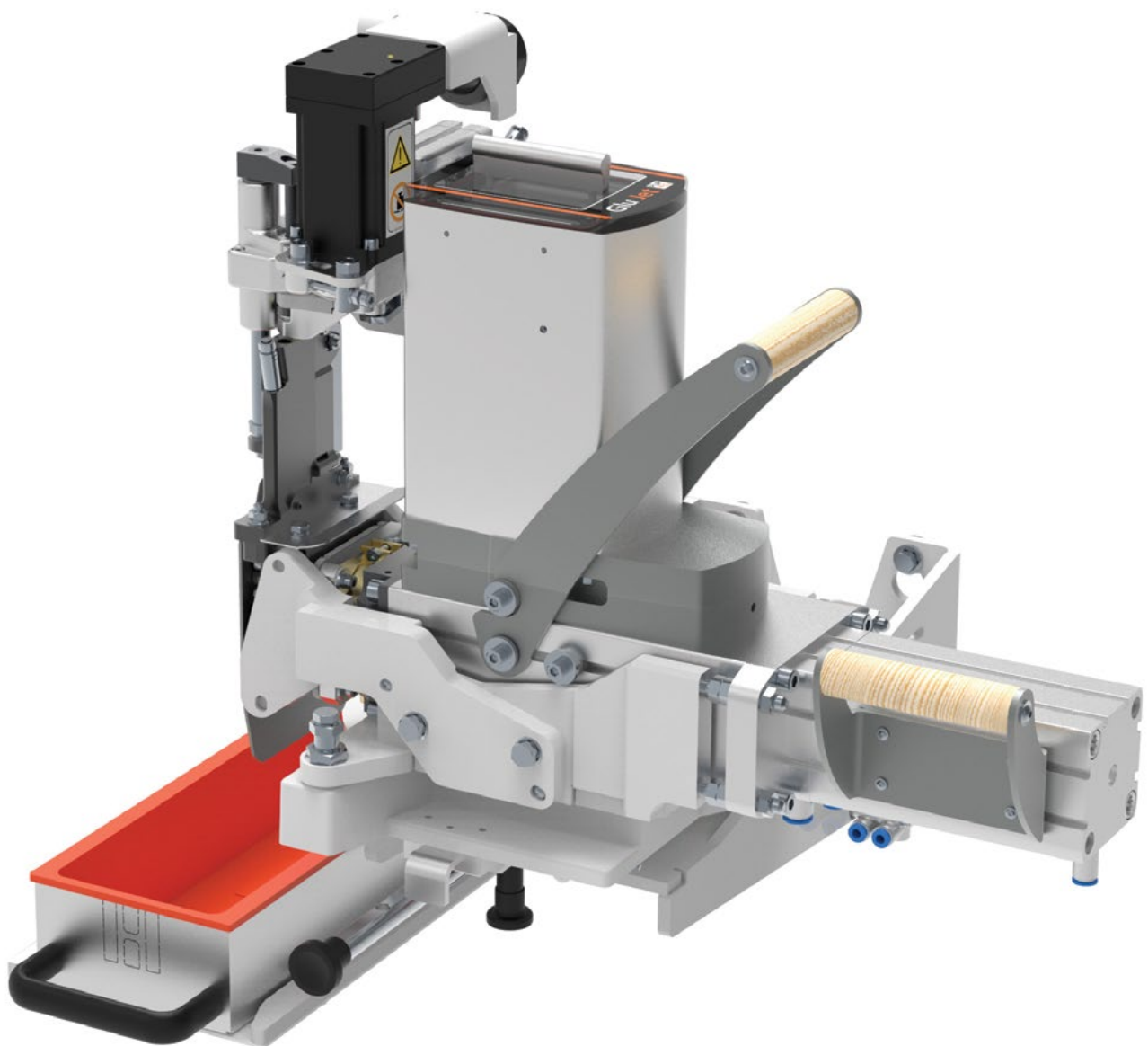
The processing head is also freely accessible from the front and rear via large doors. The new EPICON impresses with its compact and user-oriented design: the vacuum pump, tool changer and control cabinet are fully integrated into the machine design.

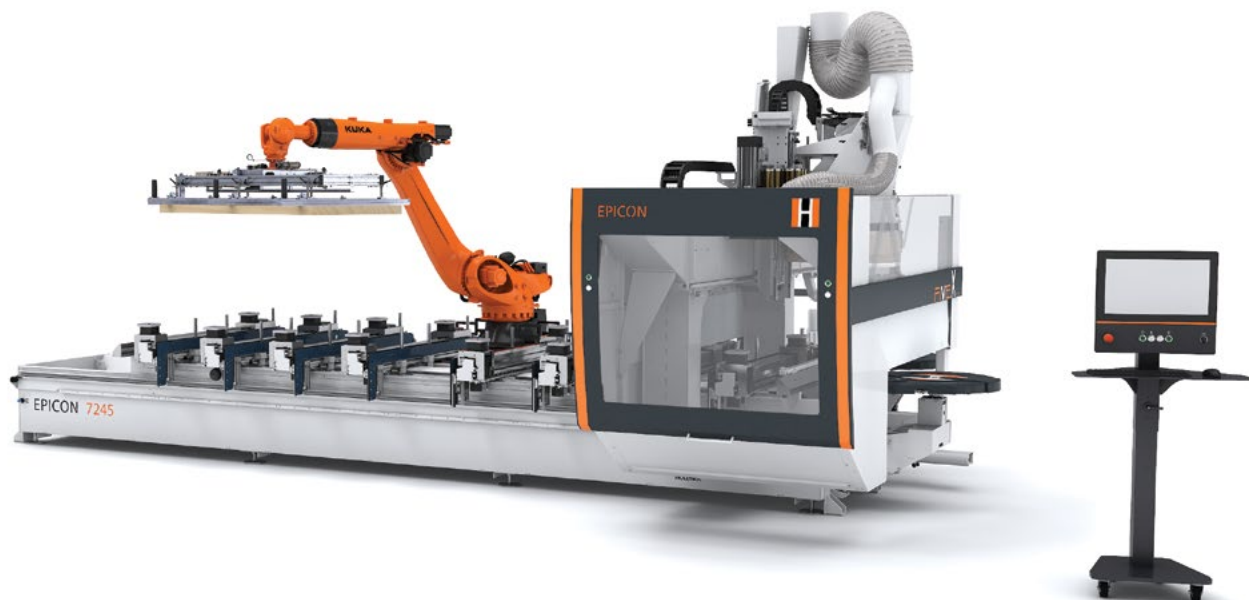
This results in a pure installation dimension of just 6,600mm with 3,150mm between the stops. Thanks to the compact design, installation time is also minimised, as the essential machine parts arrive at the customer's premises fully assembled on the EPICON 7135 SpaceSaver.

This new EPICON is perfect for traditional craftsmen in furniture construction and interior finishing, as well as for demanding applications with panel material or solid wood.

With the full machine depth and all units as well as the powerful five-axis processing head, even complex projects with mitre cuts, free forms, or templates can be implemented with ease.

As known from the EPICON series, it opens up completely new horizons for users to realise their creativity. The five-axis head and optimally equipped drilling groups make these machining centres absolute top performers.





Whether for panel processing, solid wood, or composite materials - the EPICON console CNCs are impressive in all areas. Not only the machining dimensions of the new EPICON speak for themselves, but also the impressive hardware equipment.

Typical for Holz-Her, these five-axis power packs are equipped with a powerful milling spindle. For maximum flexibility, the EPICON can be equipped with different machine tables.

In addition to the standard console table, fully automatic tables, or the VISE LED table are also available. This is how flexible CNC machining can be with the EPICON series.

'Minimum installation dimensions - maximum freedom without compromising on performance and flexibility. This is what the new EPICON 7135 SpaceSaver stands for,' says CNC product specialist at Holz-Her GmbH, Bendeguz Füredi,

Full automation for door and furniture production

Automation is the key to the future of woodworking. At LIGNA, Holz-Her will be presenting innovative automation solutions specifically for door and furniture production.

With intelligent control technology, integrated workflows and sophisticated gripper technology, Holz-Her enables even more efficient

and economical production - from material feeding to the finished product. With the EPICON production cell, Holz-Her offers a powerful single machine solution for automated and efficient door production. For future-oriented furniture production, Holz-Her will be presenting a new way of automatically unloading nesting machines with the "Store-Pick solution". Both new solutions enable low-manpower and efficient production.

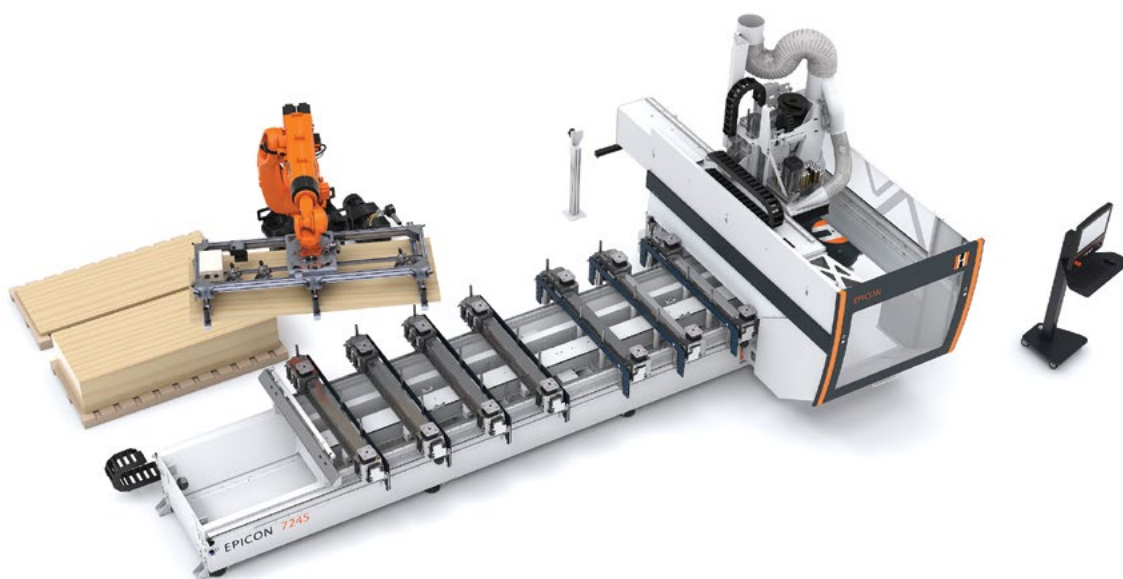
Live demonstrations from other areas

In addition to these three main topics, other exciting technologies will also be demonstrated live at LIGNA.

Visitors will have the opportunity to experience state-of-the-art solutions for horizontal and vertical cutting, vertical CNC processing and smart systems for drilling and dowel insertion in action on the German woodworking machinery manufacturer's impressive stand.

Holz-Her invites all trade visitors to experience the future of woodworking at first hand and be inspired by the latest developments. Visit us at LIGNA 2025 and discover innovative technologies for efficient and economical production!

For further information visit www.weinig.com or www.holzher.com



ADAPTING TO CONSUMER EXPECTATIONS AND MARKET REALITIES THANKS TO INDUSTRY 4.0

CONSUMERS today are increasingly seeking furniture that is more responsible, higher in quality and customisable, according to Lectra's sales director, Furniture, Northern & Eastern Europe, Christophe Gaysse.

At the same time, many are looking for lower-priced options, due to reduced purchasing power, or shifting priorities, where furniture may take a backseat to other essential goods.

This presents a unique challenge for brands and manufacturers: they must deliver better-quality furniture at more affordable prices, while also expanding their service offerings.

The furniture industry is entering a transformative era — one driven by flexibility, durability and innovation. Companies that can anticipate these changes and adapt accordingly will be best positioned to succeed in a rapidly evolving market.

Technology and innovation will be crucial in meeting the current demands. Cost-effective production methods and the development of modular, affordable furniture solutions are expected to revitalise sales and drive future growth.

Companies are increasingly turning to advanced manufacturing systems to better predict, control and manage production costs — especially in light of fluctuating raw material prices and changing tax policies.

Digital transformation is at the heart of this shift. Following the automation brought by the third industrial revolution, the connected world of Industry 4.0 is the next frontier that furniture manufacturers must embrace.

Meanwhile, geopolitical tensions, rising protectionism and increasing logistics costs are reshaping global supply chains.

Businesses will need to make strategic decisions about where to produce — choosing either friend-shoring (relocating operations based on geopolitical alliances), or near-shoring (favouring closer geographic locations). These strategies help bypass trade barriers, shorten lead times, reduce transportation costs and minimise environmental impact.

Profitability and sustainability must now go hand in hand. This shift reflects a growing emphasis on sustainable and local supply chains. Increasing environmental regulations are pushing companies to accelerate their move toward eco-friendly production processes.

In order to comply with these stricter standards, brands will need to rely more heavily on sustainable materials and ensure traceability through Green certifications and thorough data collection across their



Lectra's sales director, Furniture, Northern & Eastern Europe, Christophe Gaysse.

supply chains. However, beyond mere compliance, these practices also help brands connect with a growing base of environmentally conscious consumers.

Companies that successfully embed sustainability into their design, production, marketing and business strategies will emerge as leaders in this new, socially responsible marketplace.

One of the biggest hurdles? Material waste. The upholstered furniture industry alone generates approximately five million tons of waste annually, which leads to higher costs and a larger environmental foot-print.

Smarter, more efficient manufacturing solutions are urgently needed to reduce waste whilst maintaining high productivity.

The bottom line? Change is not just coming — it's already here. The entire furniture industry must evolve to stay ahead of emerging trends. By working together — brands, manufacturers and suppliers of technology, materials and services — the industry can shape a smarter, more sustainable future for furniture.

For further information visit www.lectra.com

NEW SALES MANAGER AT REGINOX

REGINOX UK has appointed Gavin Green as a new area sales manager for Central England and North Wales.

As a former national sales manager with BA Components, Gavin most recently ran his own kitchen supply and design business, which he has now handed over to his brother.

Gavin says he was first attracted to the role because of Reginox's reputation.

'I've worked in the industry for 30 years and I knew Reginox from previous experience — it's such a well-established brand,' says Gavin.

Gavin joins the four-strong Reginox area sales team, which is led by UK sales manager, Rebekah Tomkinson.

'We're delighted to have Gavin on the team,' says Reginox UK commercial director, Dave Mayer.



For further information visit www.reginox.co.uk

To find all the latest news online go to www.industrialwoodworking.co.uk

Email us at: bill.willowe@gmail.com

BESPOKE TIMBER HAND-RAIL AND BALLUSTRADE MANUFACTURER SHORTLISTED FOR MAJOR AWARD

BOLTON-based Handrail Creations has been shortlisted for the Manufacturing Innovation Award at the Made in the North West Awards ceremony which aims to celebrate manufacturing businesses and shed light on the diversely innovative ways that these manufacturers continue to deliver and thrive right across the region.

Established in 2014 Handrail Creations quickly flourished and grew from a small family business based in Manchester to a market-leading, multi-award winner in the field of bespoke timber hand-rails and balustrades.

Previous accolades under their belt include landing first place for the 2023 British Woodwork Federation Awards" and the "Made in North West Awards for Digital Engineering and Technology".

Handrail Creations stands proudly at the forefront of technology when it comes to CNC manufacturing of wood and boasts a fantastic team of dedicated and innovative designers, engineers and craftspeople to help bring customers' timber handrails to life, creating cutting-edge bespoke designs.

With an emphasis on providing only the highest quality, Handrail Creations balances flawless customer service with innovative ways to



maintain sustainability and a commitment to the Environment as a fully FSC certified business.

For further information tel Handrail Creations on 01204 370559.
Visit www.handrailcreations.co.uk

MEDITE PROVIDES HEADLINE SPONSORSHIP IN A 555-MILE CHARITY CYCLE EVENT IN IRELAND WITH MANAGING DIRECTOR, CHRIS KING TAKING PART

MEDITE SMARTPLY, the market-leading manufacturer of sustainable wood-based panels, has announced its headline sponsorship and active participation in the 2025 Doddie's Lions Challenge – a 555-mile charity cycle across Ireland in support of the My Name's Doddie Foundation (MND).

With the active participation of the company's managing director, Chris King, this initiative reflects the company's ongoing commitment to community, well-being and meaningful action beyond the business.

As the team prepares to ride in memory of rugby legend Doddie Weir, this partnership highlights a shared mission to raise awareness and vital funds for Motor Neurone Disease (MND) research.

Taking place from June 10-14 2025, the ride will begin in Belfast and conclude in Dublin.

As a proud supporter of the Foundation and headline sponsor of the challenge, MEDITE SMARTPLY is honoured to contribute to this meaningful cause.

To support MEDITE SMARTPLY's fundraising efforts as part of the Doddie's Lions Challenge, please donate here:
https://uk.emma-live.com/doddieslionscycle/individual_giving/medite-smartplys-fundraising-page



To find all the latest news online go to www.industrialwoodworking.co.uk

Email us at: bill.willowe@gmail.com

VENICE: A CITY FLOATING ON A SUBMERGED FOREST

SINCE 421AD, Venice has stood on millions of tree trunks stuck into the clay bottom of the lagoon. These supporting pillars are mostly alder, with a few oaks and conifer and they underpin the entire city.

In the salt water, these wooden pillars have petrified over time, due to lack of oxygen. Now they have become as hard as stone. St Mark's Campanile alone stands on 100,000 piles, while the majestic Basilica della Salute is supported by over a million tree trunks.

The ancient builders beat these trees into the seabed, creating a veritable submerged forest, using them to replace natural bedrock missing in the soft Venetian marshland.

Hundreds of thousands of these posts were driven into the soft soil of the lagoon mudflats, whilst pebbles and sand all around them were used to create a solid base for construction.

This unique structure largely comprises piles spaced just 50cm apart. Situated at 1.6m below the waterline, after over 1,500 years this extraordinary feat of medieval engineering continues to support one of the most fascinating cities in the world. Quite simply wood is to Venice what the stars are to the galaxy. Without wood, the beauty of Italy's most frequently visited city would not be so readily apparent.

Indeed, it is quite mind blowing to imagine this "upside down" forest supporting Venice's palatial buildings. The story claiming that the Salute

church is supported by one million posts in wood maybe just a legend. However, it is true that the Rialto Bridge is held by around 12,000 posts placed in three separate layers.

Timber has also been put to extensive use in the interiors of the many magnificent buildings which make up this tourist Mecca. Floors, ceilings and trusses contained within palaces, churches monasteries and merchants houses are all made of wood. The flexible quality of this building material allows for any shifting of the ground.

The roof of the huge Major Council Hall in the Doge's palace, is claimed to be the largest roof of any building in Europe. Under the supervision of the architect, Antonio Da Ponte, this exceptional room was provided with a flat ceiling after a terrible fire in 1577. (Later on in his career, Antonio Da Ponte was commissioned for the construction of the Rialto bridge).

Pillars or columns could not be placed on the elastic and yet fragile floor of the Major Council hall. It was for this reason that, in order to support the ceiling, the roof was designed to download the weight on the side walls using gigantic composite wooden trusses.

Venetians often recycled the wooden parts left over once the carpenters squared a trunk often using them to construct the interior walls in between the rooms inside a house. They placed the wooden left-overs

vertically and then fixed them on to the ceiling and on to the floors, using long, metal nails. These walls were then sandwiched in between two more layers of wood - this time horizontally - over which mortar was laid. In this way, the walls served to strengthen the construction.

If everything you see in Venice which was constructed in wood was delivered by boat, can you imagine how much wood was needed required to build boats and ships, masts and oars and oar locks?

Cargo ships delivered much of this wood to Venice where the quality of the wood being used in the construction of the various elaborate buildings was equally as important as vast quantities being delivered.

In the Venetian lagoon it is still possible to see groups of wooden posts called "bricole". These are used to mark the deep waterways, helping to ensure that water-borne craft do not become stuck in the shallow waters. Acting as essential markers for the correct navigation routes, these "bricole" do not serve as mooring points.

The Venetian Senate voted that all new channels in the lagoon had to be marked by wooden posts and that they had to be checked on an annual basis. From a survey dating back to 1789 we learn that, at that point in history, there were over 8,000 "bricole" contained within the lagoon.

Currently the Lunardelli



Lunardelli Venezia - the company responsible for undertaking the necessary work to ensure that the "bricole" are being properly maintained - is now headed by the founder's daughter, Agnese Lunaerelli (pictured right).

To find all the latest news online go to www.industrialwoodworking.co.uk

Email us at: bill.willowe@gmail.com

company in Venice is undertaking the necessary work to ensure that the “brioche” are being properly maintained.

Angelo Lunardelli was just nine years old when his family sent him to Venice to learn to become a carpenter. In 1967 he founded his own company, but he never forgot how much he owed to Venice.

The company (now headed by Angelo’s daughter, Agnese) has recently opened a showroom and a carpenter’s workshop in the heart of Venice. Lunardelli Venezia creates a range of fine objects, pairing wood with precious and traditional materials to re-interpret the island’s historical knowledge for working with wood, amplifying its potential with a

modern approach to both the production process and design.

Its design made Venice a complex and thrillingly unique European city beloved by millions of tourists. As a city, Venice has an ineffable essence that is, on the one hand, rebellious, yet elegant and cosmopolitan and certainly romantic. It is absolutely Italian.

It captures the hearts of so many. In the choice of materials that mankind has used in its construction, this world heritage sites is a unique masterpiece and acts as a testament to the enduring strength of the ancient timbers which have quite literally supported the city for centuries.



In the salt waters of the lagoon these wooden pillars have petrified over time, due to lack of oxygen. Now they have become as hard as stone.

To find all the latest news online go to www.industrialwoodworking.co.uk

Email us at: bill.willowe@gmail.com

VOLLMER UK LAUNCHES NEW STATE-OF-THE-ART VLASER 370 MACHINE

THE new VLaser 370 from Vollmer UK is a state-of-the-art machine designed for processing precision cutting tools made from ultra-hard materials, such as PCD, CVD and PCBN.

This ground-breaking addition makes Vollmer the industry's first full-line manufacturer, offering grinding, erosion, wire erosion and laser cutting technologies.

Where rival technologies reach their limits, the VLaser 370 pushes boundaries, setting new industry standards. Incorporating innovative kinematics, smooth movement, future-proof components and exceptional thermal stability, the VLaser 370 delivers unparalleled precision, sustainability and consistency – critical for manufacturing the most demanding cutting tools.

Designed for tools with a diameter of up to 150mm, an overall length of 250mm, and a maximum weight of 10kg, production can be automated with the HC4 or HC4 Plus systems, which facilitate up to 158 or 160 tools, respectively.

Proven to be up to 50 per cent more productive than rival technologies, the VLaser 370 achieves micron-level precision, with field

tests demonstrating accuracy within 0.002mm. At its core, the machine's concept revolves around the laser positioned at the C-axis' rotation point, with five axes and a fixed-beam laser enabling fast, precise machining at the machine's centre point.

Ease of use & enhanced precision

The VLaser 370 simplifies operations with direct clamping of tools in the A-axis, regardless of tool length, which eliminates the need for extensions.

Additionally, a counterpoint can be incorporated, further enhancing stability and precision, particularly for long tools that require extreme accuracy.

For users already familiar with Vollmer's EDM operational system, transitioning to the VLaser 370 is effortless. The machine features the same intuitive interface and operating philosophy, allowing seamless transfer of programs from existing Vollmer EDM machines.

Unmatched efficiency & sustainability

As manufacturers increasingly focus on sustainability and cost-



The new Vollmer VLaser 370 – perfect for precision cutting tool production.

To find all the latest news online go to www.industrialwoodworking.co.uk

Email us at: bill.willowe@gmail.com

efficiency, Vollmer has reduced the VLaser 370's energy consumption by more than 40 per cent. This impressive achievement is made possible by:

- Ground-breaking laser technology.
- Optimised kinematics.
- Highly efficient drive technology.

Moreover, the machine operates independently of consumable costs, which further reduces operational expenses.

Automation & Industry 4.0 integration

Designed for unmanned production, the VLaser 370 can run 24/7, including week-ends, with flexible automation systems ensuring uninterrupted workflow. Integrated with an Industry 4.0 gateway, manufacturers benefit from seamless data exchange between the machine and their digital environment, which leads to optimised processes, minimal downtime and elimination of errors.

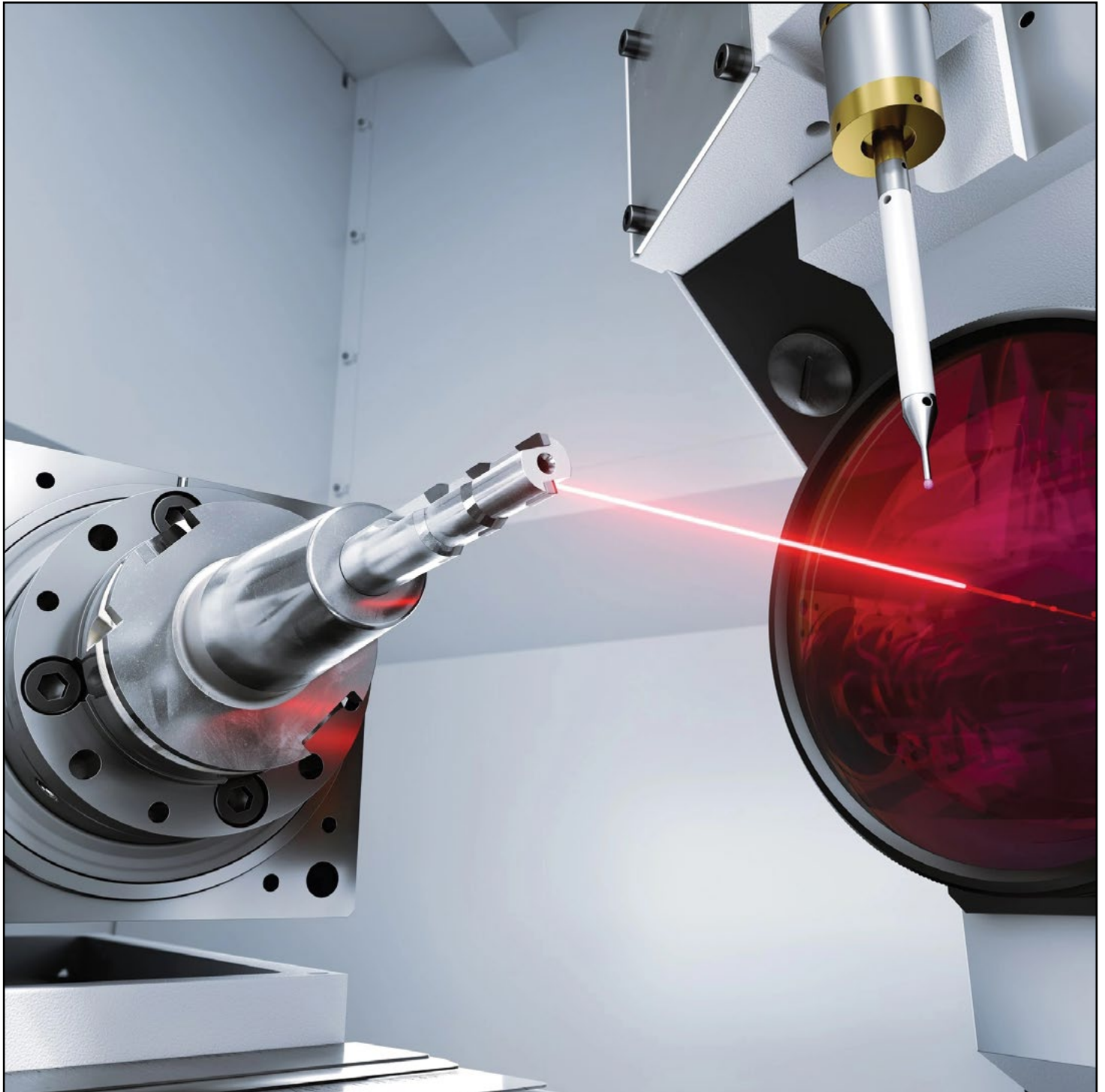
Unrivalled flexibility for any industry

The VLaser 370 stands as the most flexible machine in the industry for manufacturing cutting tools. Whether for automotive, aerospace, or electronics applications, it handles everything from standard tools to complex geometries and step tools. With exceptional precision, surface finishes and edge quality in the μm range, it enables:

- Processing of extremely small internal radii.
- Creation of intricate internal and external forms.
- Customisable cutting-edge treatments for consistent performance and durability.
- Large-area chipbreaker formation via STL parameter imports.

The Vollmer VLaser 370 truly is a game-changer, offering manufacturers the ultimate solution for precision cutting tool production.

For further information visit www.vollmer-group.com.



The VLaser 370 is a game changer for cutting tool manufacturers

To find all the latest news online go to www.industrialwoodworking.co.uk

Email us at: bill.willowe@gmail.com

CAD SOFTWARE AND AUTOMATED CUTTING TECHNOLOGY ADVANCES FROM ASSYT BULLMER DRIVE EFFICIENCY AND INNOVATION FOR FURNITURE MANUFACTURERS

ASSYT Bullmer, a market leader in CAD software and automated cutting technology for upholstery has over 30 years of experience in the industry and continues to drive efficiency and innovation for furniture manufacturers across the industry.

Precision and efficiency in cutting technology

The company's state-of-the-art single-ply cutter is designed to maximise efficiency without compromising on quality.

The Bullmer multi-ply cutting machines can cut up to 8cm of compressed material, ensuring maximum capacity for high-volume production.

Meanwhile, the single-ply cutters offer unparalleled versatility, with cutting speeds of up to 120m/min and additional features, such as pattern matching and leather hide nesting, making them ideal for bespoke and high-precision upholstery work.

Innovating furniture manufacturing with CAD solutions

As a leading provider of CAD solutions, Assyst Bullmer also offers Optitex CAD software, a powerful tool that simplifies and enhances

design, pattern-making, and fabric utilisation.

The software helps businesses streamline their workflow, reducing design time by up to 30 per cent and material waste by as much as 20 per cent.

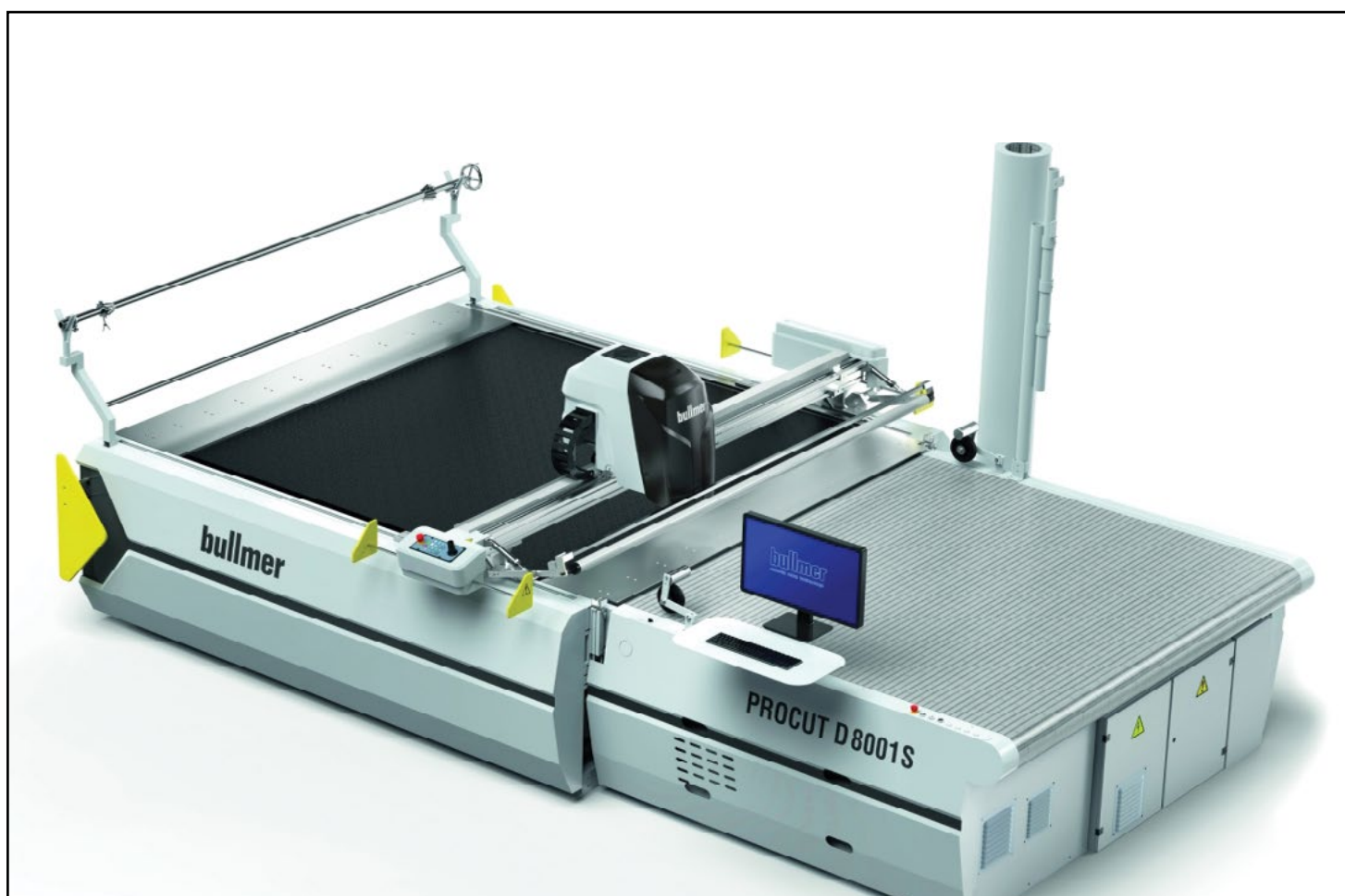
With this cutting-edge solution, furniture manufacturers can optimise their production while ensuring precision and sustainability.

Commitment to sustainability and cost reduction

Assyst Bullmer's solutions are not only focused on performance, but also on cost savings and sustainability. The integration of CAD and automated cutting technologies significantly reduces material waste, making the production process more environmentally friendly.

By utilising these solutions, manufacturers can achieve substantial cost reductions, boosting their overall profitability while maintaining high-quality output.

For further information tel Assyst Bullmer on 01924 373900.
Visit <https://assystbullmer.co.uk>



To find all the latest news online go to www.industrialwoodworking.co.uk

Email us at: bill.willowe@gmail.com

STEPNELL EXPANDS TRADE SERVICES WITH STAND-ALONE JOINERY VENTURE

COMPLETE construction partner, Stepnell, is building on its rich heritage in high-quality construction and specialist joinery with a new bespoke joinery business.

Based in Rugby and operating nationwide, Lawford Bespoke Joinery will build upon Stepnell's many decades of industry experience.

The business will provide end-to-end joinery services, from design consultation through to installation, tailored to a diverse range of sectors, including commercial, residential, heritage and hospitality.

Its dedicated team of eight highly skilled joiners and craftsmen are well-equipped to deliver exceptional, made-to-measure joinery projects — ranging from intricate heritage restorations to sleek, modern interiors.

Services will also include the creation of bespoke furniture, as well as the manufacture of integrated plumbing systems (IPS) and acoustic panels.

'Joinery has been integral to Stepnell's construction capabilities for more than 155 years,' says joinery manager, Lee Grant.

'Retaining fundamental expertise in craftsmanship remains vital to providing sustainable construction works. This new venture will allow us to grow and flourish as an independent business. We are passionate about creating bespoke, high-quality joinery solutions that elevate any project.'

'The business will continue to support Stepnell's projects whilst expanding its reach wider by building its own client base,' says Lee.

The creation of Lawford Bespoke Joinery thus marks a wider strategic shift at Stepnell, with a view to expanding its specialist capabilities and becoming even more agile in responding to client needs.

'Lawford Bespoke Joinery creates new possibilities for our joinery team to expand externally, and support a broader range of clients while continuing to deliver the highest standards of craftsmanship,' affirms managing director at Stepnell, Tom Wakeford.

'The decision to establish Lawford Bespoke Joinery as a stand-alone business aligns with Stepnell's long-term strategy to enhance its specialist services, as has also been the case with energy management business Step Energy.'

'By separating these specialist services, we become more agile and responsive to customer need, furthering our position as a trusted complete construction partner — supporting both private and public sectors,' concludes Mr Wakeford.

With a growing pipeline of work and a flair for quality, detail, and craftsmanship that stands the test of time, Lawford Bespoke Joinery is the perfect partner for clients seeking high-quality joinery solutions.

For further information visit www.lawfordbespokejoinery.co.uk



Pictured: Left to right: bench joinery apprentice, Hugh Morgan, joiner Harvey Heise, bench joiner, John Gare, joinery manager, Lee Grant and joiners, Ben Robert and Gary Painter.

To find all the latest news online go to www.industrialwoodworking.co.uk

Email us at: bill.willowe@gmail.com

SIX APPRENTICES MAKE IT TO THE SCREWFIX TRADE APPRENTICE COMPETITION SEMI-FINAL

FINN MacArthur, Sinead McLaren, Anthony Fallon, Lewis Hickson, Freddie Carr and Ben Thompson have been named as semi-finalists in this year's Screwfix Trade Apprentice competition. If successful, their respective colleges will also receive £2,000 worth of Screwfix vouchers for workshop equipment for current and future apprentices.

Six aspiring carpenters and joiners, are in with a chance of winning Screwfix Trade Apprentice 2025 after being selected from more than 2,000 applications to compete in this year's semi-final.

They all will now compete against the other semi-finalists from the UK and Ireland, who are currently completing apprenticeships across various construction trades. The semi-final stage will see them face a tough interview with Screwfix before finding out if they have made it to the final.

Just 10 semi-finalists will be selected to compete for the title of Screwfix Trade Apprentice 2025 at the two-day final of the competition in May.

Not only will the winner receive a prize bundle of technology, training and tools worth £10,000, but their college will also receive £2,000 worth of Screwfix vouchers to spend on workshop equipment, helping to upskill tomorrow's trade professionals.

They were all shortlisted for the semi-final for their passion, dedication and ambition – which shone through in their applications.

'Living on a rural Scottish island, no two days are the same and I love the variety this job brings. I'll turn my hand to anything – roughing, finishing, roofing – you name it,' says Finn MacArthur, aged 21, who is studying joinery at the West College Scotland in Paisley.

'I discovered my love for woodworking when I was 14, so to be



Finn MacArthur, aged 21, is studying joinery at the West College Scotland in Paisley.

recognised as an apprentice joiner means so much to me. It's an incredible opportunity to showcase my journey and inspire others, especially



Working on people's homes means shaping spaces that hold memories for generations and that's an honour that Anthony Fallon, aged 17 does not take lightly.



Ben Thompson, aged 19, is studying architectural joinery at Abingdon College. He loves the creative freedom of joinery and being able to make a meaningful contribution to a building project.

To find all the latest news online go to www.industrialwoodworking.co.uk

Email us at: bill.willowe@gmail.com

women, to pursue careers in the trade,' says Sinead McLaren, aged 18, who is studying joinery at Borders College.

'Since childhood, I've dreamed of being in the trade. Now as an apprentice, I want to inspire others to follow the same path. Working on people's homes means shaping spaces that hold memories for generations and that's an honour I don't take lightly,' says Anthony Fallon, aged 17, who is studying Level 2 site carpentry and joinery at Hugh Baird College.

'I love being in the trade, because it allows me to take a customer's vision and turn it into reality. Renovation projects are my passion. My dream is to restore meaningful buildings and create homes that truly match the people living in them,' says Lewis Hickson, who is studying Level 2 carpentry and joinery at Grimsby Institute.

'Being an architectural joiner is more than just a job to me – it's a passion. Working alongside my father, who inspires me every day, I'm determined to push myself to be the best I can be and, one day, take over the family business,' says Freddie Carr, aged 18, who is studying architectural joinery at York College.

'I love the creative freedom of joinery and being able to make a meaningful contribution to a building project. I want to challenge the misconceptions that surround the trade to show people that it can be an exciting and fulfilling career,' says Ben Thompson, aged 19, who is studying architectural joinery at Abingdon College.

'Screwfix Trade Apprentice is a fantastic way to recognise the hard work and dedication of today's apprentices who are undertaking intensive, on-the-job training and qualifications to create tomorrow's workforce of skilled tradespeople,' says marketing director for Screwfix, Jack Wallace.

'This competition highlights how vital apprenticeships are in addressing the current skills shortage. We are committed to championing trade apprentices, the colleges that teach them and the employers that nurture them,' he adds.

'Every year we are consistently amazed by the applications from trade apprentices across the UK and Ireland who are passionate, dedicated and committed to excelling in their chosen trade. To make it through to the semi-finals is a fantastic achievement. I wish this year's semi-finalists the very best of luck in making it to the final, concludes Mr Wallace.



Sinead McLaren discovered her love for woodworking when she was just 14. Her aim is to inspire others, especially women, to pursue a career in the trade.

For further information visit www.screwfix.com/landingpage/tradeapprentice



Freddie Carr, aged 18 works alongside his father and, one day, hopes to take over the family business.



Lewis Hickson's dream is to restore meaningful buildings and create homes that truly match the people living in them.

To find all the latest news online go to www.industrialwoodworking.co.uk

Email us at: bill.willowe@gmail.com

TREND IS CELEBRATING 70 YEARS OF INNOVATION AND EXCELLENCE

TREND the esteemed power tool accessory brand, proudly marks its 70th anniversary, celebrating seven decades of delivering quality, innovative and time-saving solutions to tradespeople and carpentry enthusiasts alike.

Since its founding in 1955, Trend has evolved from humble beginnings into a leading industry name, renowned for its commitment to quality and innovation.

Based in Watford in Hertfordshire, Trend has consistently provided professionals with tools that make jobs easier and more efficient.

The company's impressive product range – including the revolutionary Hinge Jig, market-leading routers, router cutters, saw blades and more – underscores its dedication to pushing the boundaries of innovation.

Trend's influence extends far beyond the UK, with a strong presence across Europe, Australia and the US. This global reach highlights the brand's commitment to providing exceptional tools and solutions to tradespeople around the world.

A year-long celebration

In honour of this milestone, Trend is launching a series of exciting campaigns throughout the year, which are designed to engage both consumers and retailers. These initiatives aim to spread the word about Trend's heritage and to showcase its latest innovations, as well as driving sales.

Throughout 2025 Trend will be running a total of five promotional campaigns as detailed on these pages.

For further information visit www.trend-uk.com.



Trend's Mark II version of the Fast Track Fixed angle sharpening device adds new technology in an improved offering.



In 2025 Trend is proudly marking its 70th anniversary, celebrating seven decades of delivering quality, innovative and time-saving solutions to tradespeople and carpentry enthusiasts alike.



Trend's impressive product range includes routers - the current selection of which underscores its dedication to pushing the boundaries of innovation.

To find all the latest news online go to www.industrialwoodworking.co.uk

Email us at: bill.willowe@gmail.com

BUILDING OUR LEGACY SINCE 1955

Building our Legacy A behind-the-scenes look at what makes Trend tick, featuring some of the company's greatest products over the years.



Golden Ticket Each month, one lucky customer will have the chance to win top Trend products.



Carpentry expert, Andy King will be sharing 70 of his top tips throughout the year.



Treasure Hunt. A stash of Trend products is hidden somewhere in the UK, with clues published to help participants find them.

1950s 1960s 1970s 1980s

TRADES OF THE DECADES

1990s 2000s 2010s 2020s

Trades of the Decades. Each decade of Trend's history will be represented by an end user, sharing their projects and experiences.

To find all the latest news online go to www.industrialwoodworking.co.uk

Email us at: bill.willowe@gmail.com

DCE DELIVERS EXTRACTION EXCELLENCE FOR NORTHERN IRISH COMPASS WINDOWS & DOORS

COMPASS Windows & Doors, based in Derry, is Northern Ireland's premier manufacturer of timber, aluminium, PVCu and Alu-Clad windows and doors. Established in 1977, the company has experienced significant growth and development.

One such development was the acquisition of two state-of-the-art machines from SCM: a new CNC router along with a complex Windowflex machining cell, designed to perform all operations required for producing window frames from solid timber.

With the addition of these machines, Compass needed to re-evaluate its dust extraction systems. As such, the company enlisted the expertise of Dust Control Environmental (DCE) Ltd to design, manufacture and install a compliant dust extraction system.

Project requirements

- The existing cyclone dust collectors were undersized, necessitating a more efficient system to handle the new machines.
- Compliance with the latest EPA (Environmental Protection Law) regulations.
- Management of energy consumption and alignment with sustainability goals.
- Ensuring the safe operation of extraction equipment in a combustible atmosphere.
- Minimising production downtime by commissioning the new machinery before the dust extraction system was fully operational.
- Integration of existing machinery into the new system.

Removal of the old cyclone units.

Enhanced dust control was achieved through the installation of a DCE Envirojet W-Series, a negative pressure filter unit with ATEX adaptations to ensure safe operation in an explosive-risk environment.

The Envirojet W-Series features an E-performance panel, which monitors machine usage and adjusts the cascading fan function to meet operational requirements. This process can deliver energy savings of up to 50 per cent without compromising suction efficiency.

During installation, DCE linked the new extraction system to the older machines and removed two outdated cyclone filters free of charge while their fitters were on-site.

The benefits

DCE provided a comprehensive, end-to-end service, handling design, manufacturing and installation, including ducting, monitoring and control systems.

The DCE Envirojet W-Series will ensure highly efficient dust extraction across processing areas, maintaining clean, healthy air for workers. Equipment and machinery will also be protected from dust ingress, reducing maintenance time and improving housekeeping.

The E-performance monitoring system optimises fan usage, regulating speed and function based on the number of operational machines. This results in significant energy savings year after year.

Production downtime was minimised, due to the temporary ATEX filter, enabling a smooth transition from the old to the new dust extraction system.

The advanced Envirojet W-Series dust collector, with

its ATEX modifications, ensures compliance with EPA regulations whilst providing safe and efficient operation.

Client's comments

'The management team at Compass is extremely pleased to have appointed Dust Control Environmental Ltd to carry out a complete and comprehensive renewal of our dust extraction system in 2024,' says the managing director of Compass Windows & Doors in Northern Ireland, Michael O'Kane.

'We found the staff at DCE to be highly professional, knowledgeable, helpful and accommodating throughout the entire process,' concludes Mr O'Kane.

*For further information tel DCE on 01924 335500.
Visit www.dustcontrolenvironmental.com.*



The DCE Envirojet W-Series ensures highly efficient dust extraction across processing areas, maintaining clean, healthy air for workers.

To find all the latest news online go to www.industrialwoodworking.co.uk

Email us at: bill.willowe@gmail.com



The Envirojet W-Series features an E-performance panel, which monitors machine usage and adjusts the cascading fan function to meet operational requirements.

To find all the latest news online go to www.industrialwoodworking.co.uk

Email us at: bill.willowe@gmail.com

ENERGY INSTEAD OF CLICHES: YANNIC DIEHM AND HIS ENGAGEMENT WITH THE FIRE BRIGADE

THE millennial generation is often confronted with prejudices: critics accuse young people of having a weak work ethic, not caring about social responsibility and instead being constantly engrossed in Smartphones and social media.

However, these critical voices often forget that there are numerous counter-examples. One such example is Yannic Diehm, who is an IT employee at Lutz Pumpen GmbH in Wertheim.

Since his youth, the 28-year-old has been involved in the volunteer fire brigade in Bettingen - a village in the district town of Wertheim with around 800 inhabitants.

While others are already relaxing on the couch in the evening, Yannic Diehm keeps an eye on the pager in his trouser pocket. When the small device sounds the alarm, he is called out - whether for fires, accidents or natural disasters.

Without volunteers like him, an important pillar of society would be missing. Around 95 per cent of all firefighters in Germany today are volunteers.

'We are proud that our employees not only take responsibility in their professional lives, but also in their free time,' says managing director of Lutz Holding, Heinz Lutz.

'Yannic Diehm's commitment to the volunteer fire department impressively demonstrates his team spirit and willingness to help - values that we as a company actively promote and value,' says Heinz Lutz.

Meanwhile, 16 Lutz Pumpen employees are currently active in volunteer fire departments alongside their professional lives.

[This is what commitment looks like: around 60 deployments and 30 exercises per year](#)

Since his youth, Yannic Diehm has been involved in the Bettingen Volunteer Fire Department, which was founded in 1875. At the age of 10, he joined the youth fire department to learn about fire protection,



technical assistance and first aid.

At regular meetings, he learnt basic firefighting skills, practised using equipment and took part in competitions. He finally joined the active service at the age of 18. Since then, the pager has been his constant companion, calling him into action around 60 times a year.

Yannic Diehm and his colleagues provide technical assistance in the event of road accidents and natural disasters, remove hazardous substances and fight fires.

'I still remember a mission on the motorway very well. We could see a huge cloud of black smoke from afar. It was a lorry that was on fire,' says Yannic Diehm.

[Active in the volunteer fire brigade since his youth: Yannic Diehm](#)

In addition to deployments, Diehm takes part in exercises and training courses around 30 times a year. He is now not only a squad leader, but also an engineer driver. In this function, he is authorised to operate and maintain fire engines and their equipment.

Technology from Lutz Pumpen is also being used. The rescue vehicle with the radio call sign Wertheim 1/52 contains a double diaphragm pump which Diehm can use to pump out leaking liquids such as acids, alkalis, petrol and oil.

The strong team spirit and the certainty that we can help people in need make working for the volunteer fire brigade very valuable for me,' says Yannic Diehm.

[Yannic Diehm inspires young people to volunteer](#)

As deputy head of the youth fire brigade, Yannic Diehm is also actively involved in promoting young talent.

'It's a real challenge to get young people to volunteer, as there are so many leisure activities competing for their attention these days,' explains Diehm. However, his work and that of his colleagues is proving successful.

[Working in a chemical protection suit: Yannic Diehm takes part in exercises and training around 30 times a year](#)

According to the Ministry of the Interior, the number of youth fire brigade members in Baden-Württemberg has risen by 13.5 per cent in recent years.

'It's a great feeling when young people realise that their involvement in the volunteer fire service can change the world,' concludes Yannic Diehm.

For further information tel Lutz on 00 49 9342 879 265.